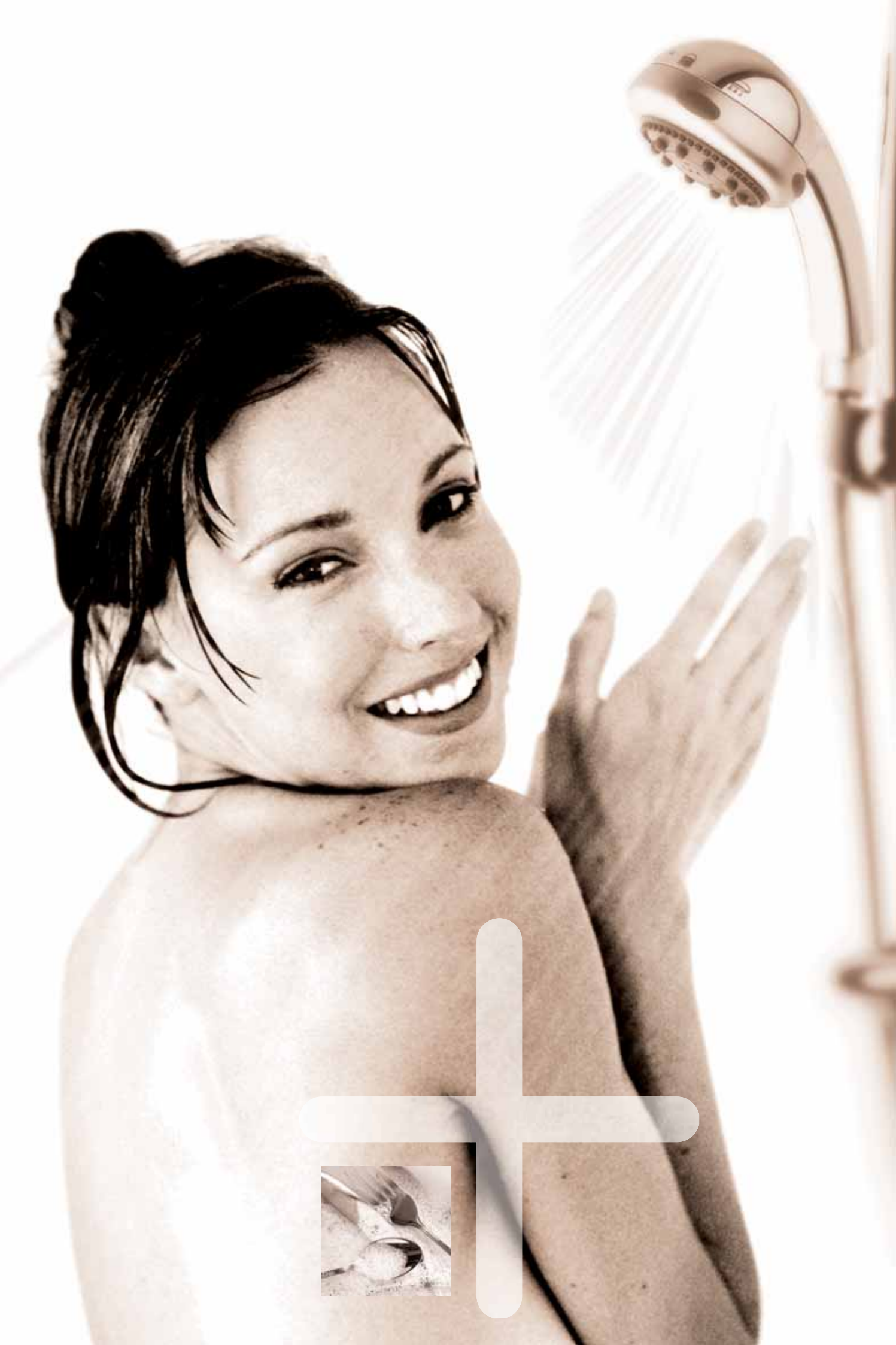


flow+system

for consistent water pressure
and temperature control





+ The perfect shower, even in a full house

+ A beautiful bath every time

+ The ideal water temperature and pressure for your kitchen and laundry, right when you need it

And all delivered,
oh so quietly

Contents

1. What Flow+ delivers
2. How does Flow+ do it?
3. Who it's for and how to get it
4. Specifiers and Installers
5. Key components
6. Project description



What Flow+ delivers

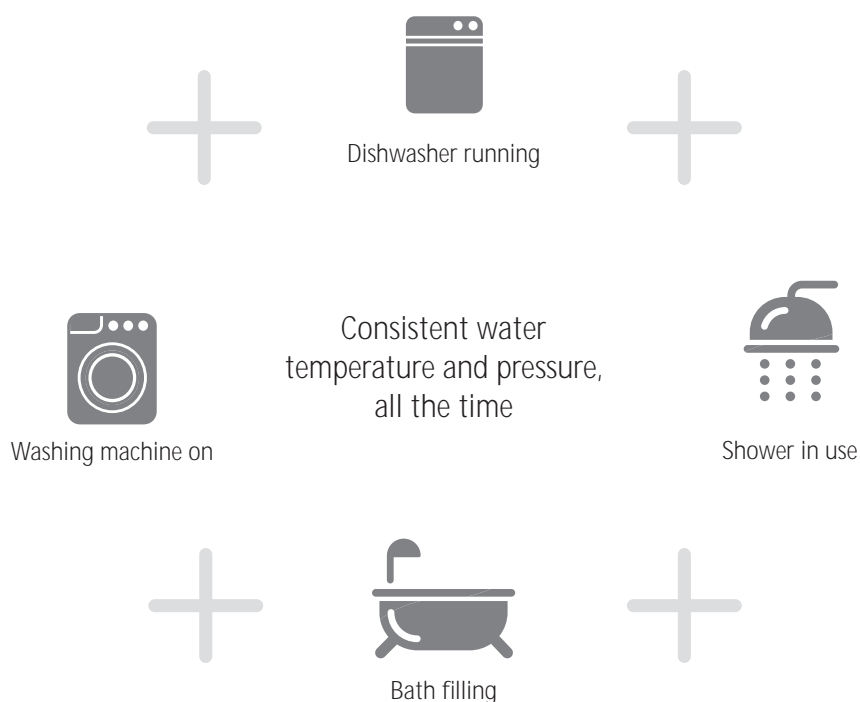
With Flow+ you'll have the perfect temperature and pressure, every time...

In recent years New Zealand homes have been grown in both size and quality of specification. For instance it is now not unusual for a home to have three bathrooms. However many people do not realise that, unless designed properly, a larger home with multiple water outlets is likely to suffer from poor or fluctuating water pressure and temperature and noisy or banging pipes.

Flow+ is a new solution from Waterware. It ensures sufficient water is delivered quietly and at a stable temperature and pressure to every tap, shower or appliance whenever you need it, no matter how big your house.

This level of uncompromised performance can be guaranteed even in the busiest or largest home.

No matter what's going on, with Flow+ you will always have hot water at good pressure, delivered quietly, all the time.





How does Flow+ do it?

Perfect water temperature and pressure, every time...

Through a customised hydraulic design

Flow+ delivers these results by having a professional hydraulic design team (the WaterwareTech team) design a customised plumbing solution for your home.

In designing your solution the WaterwareTech team use proven formulas based on a number of variables (including occupancy, number of taps, showers, other outlets, specific outflow requirements, concurrency of use, climatic norms) to calculate hot water production, pipe and valve sizes. They take into account your fuel options and preferences (Natural gas, LPG, electricity, diesel, solar) and determine the ideal location for plant and equipment.

The result is an integrated plumbing system of high quality components, delivering guaranteed performance which is fully adjustable to allow tuning for ultimate performance.

Using the best componentry

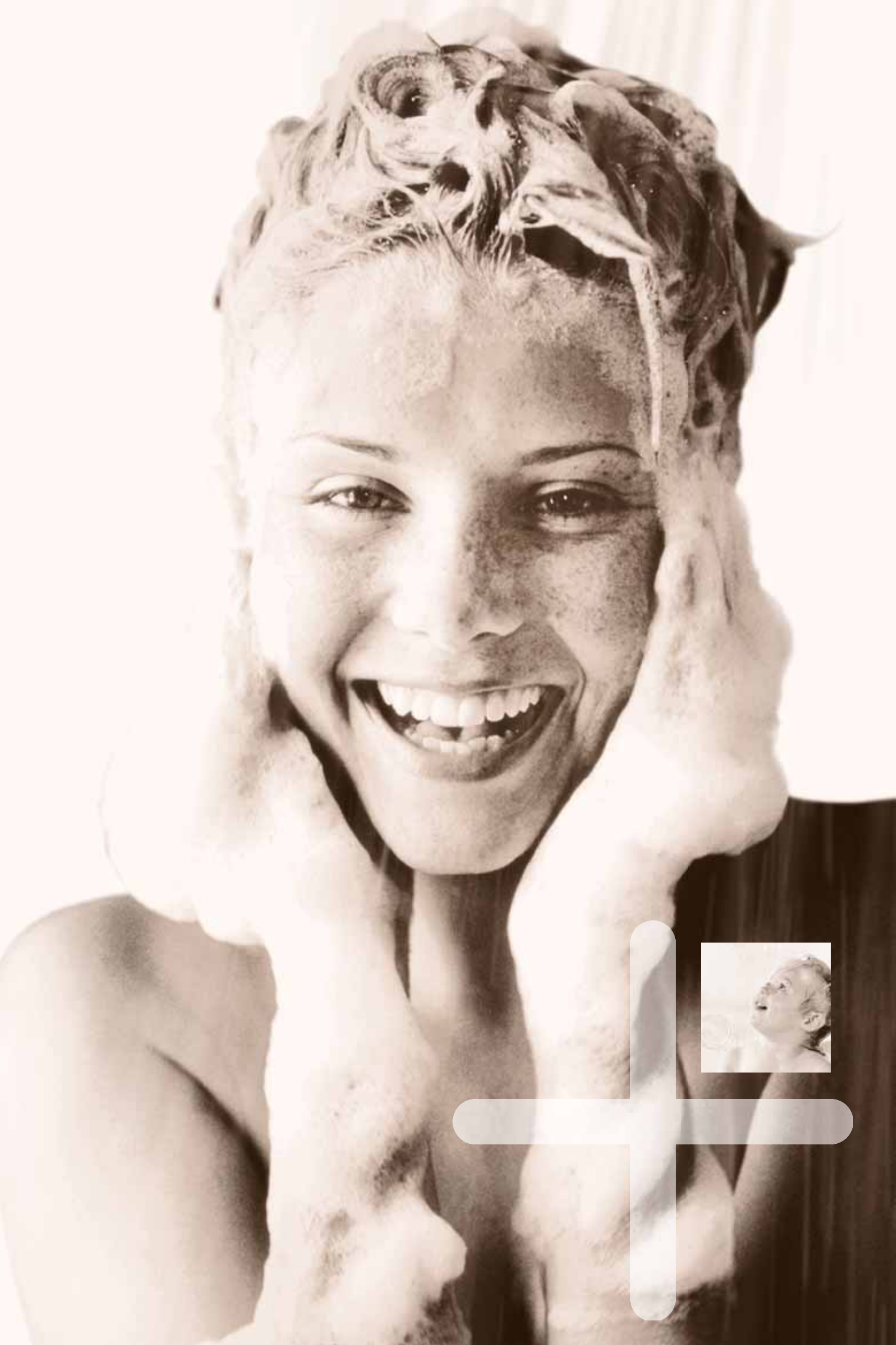
The Flow+ system uses only the highest quality products, from Waterware's premium European brands including Caleffi, Valsir, Fondital and Ferroli.

Our design team ensures that all the componentry specified will deliver the intended result.



...and the design service is free!

Best of all, with the Flow+ system this customised hydraulic design is provided free of charge. When you purchase the system we will design it for you at no cost!



Who its for and how to get it

If you're building or renovating a medium to large home you need Flow+

If your project has more than two bathrooms then Flow+ is right for you.

Flow+ is perfect for medium to large homes. So if your project has more than two bathrooms* then the WaterwareTech team would like to see your plans and make your dreams happen.

If your project is smaller than these specifications, or is a commercial project you can still contact us as we have different solutions for these markets.

We can consider your heating solution at the same time

Most Flow+ projects will consider hydronic central heating options like underfloor or radiators.

As the heating load is generally intermittent and spread over an extended period it is possible to share the capital cost of the Flow+ plant and equipment and put it to use heating your home or pool when it would otherwise be idle.

How to get Flow+

Getting Flow+ is as easy as contacting us and we will liase with your builder, plumber or architect to have it put into your home.

ph: +64 9 273 9191

fax: +64 9 273 9194

email: info@waterware.co.nz

Flow+ manual

At the end of your project you will receive a Flow+ manual detailing:

- The installations design and equipment
- Any servicing or maintenance schedules
- Your after sales service contact

* If your project has more than twenty bathrooms then it will fall outside the scope of Flow+, but still contact us at Waterware as we have another solution to suit.

Specifiers

We deliver a system that works as well as your design

Hydraulic design and the best components, means an engineered result

When you choose Flow+ the bathrooms, kitchens and laundries in your project will work as beautifully as your design.

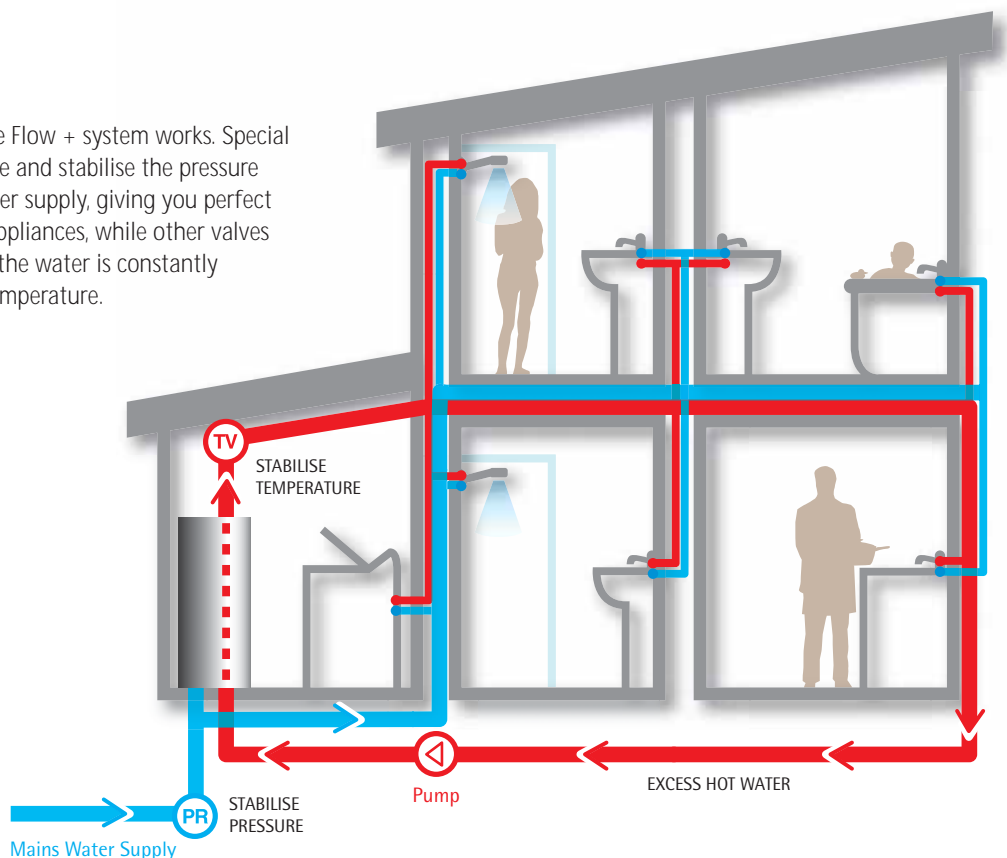
This is because our WaterwareTech (hydraulic design) team will study your working drawings and then design a system that will operate between set targets for temperature, pressure and capacity. These targets and the design are given to the installing plumber so they are clear on the objectives and how to achieve them.

Ease your workload: we will take care of the internal plumbing specification for you

On a Flow+ project our design team delivers a specification of components by brand type, model number and size. This specification can be incorporated into your master specification reducing your specification workload.

Flow+ in action

This diagram shows how the Flow + system works. Special valves are installed to reduce and stabilise the pressure coming from the mains water supply, giving you perfect flow to taps, showers and appliances, while other valves are installed to ensure that the water is constantly delivered at a the desired temperature.



Peace of mind: Making it easier for the installers to get it right

At Waterware we understand the trade and we aim to make their job as easy as possible. That's why we provide installers with an equipment schedule that specifies exactly what componentry is to be used in making the system, as well as hydraulic diagrams to facilitate the installation.

How to get Flow+ in your next project.

Contact us to have a chat about your project. Then send us through your drawings and we will generate a specification and design ready for the pricing or tender process.

ph: +64 9 273 9191

fax: +64 9 273 9194

email: info@waterware.co.nz

masterspec

Flow+ can also be specified using the Masterspec online specification system.

Installers

We aim to make your installations easier...

We provide a detailed equipment schedule

When you work with Flow+ we provide you with a detailed equipment schedule that lists every component required. The components are specified by brand type, model number and size. The items that we specify include:

- Boiler/tank or other heat source
- Pipe sizes and key transition points
- Primary pressure control valves
- Cylinder pressure safety valves, non-returns and isolators
- Tempering valve
- Ring main pump and supporting valves
- Ring main UV filter
- Boundary to building connection requirements
- Optional irrigation pressure control

We give you easy to follow hydraulic diagrams

Every Flow + specification includes easy to follow hydraulic diagrams which specify pipe sizing, layout and transition points. These enable the easy achievement of the identified targets for volume and flow velocity.

The support of the Waterware Tech team

Our team are here to help throughout the project, and we are only a phone call away.

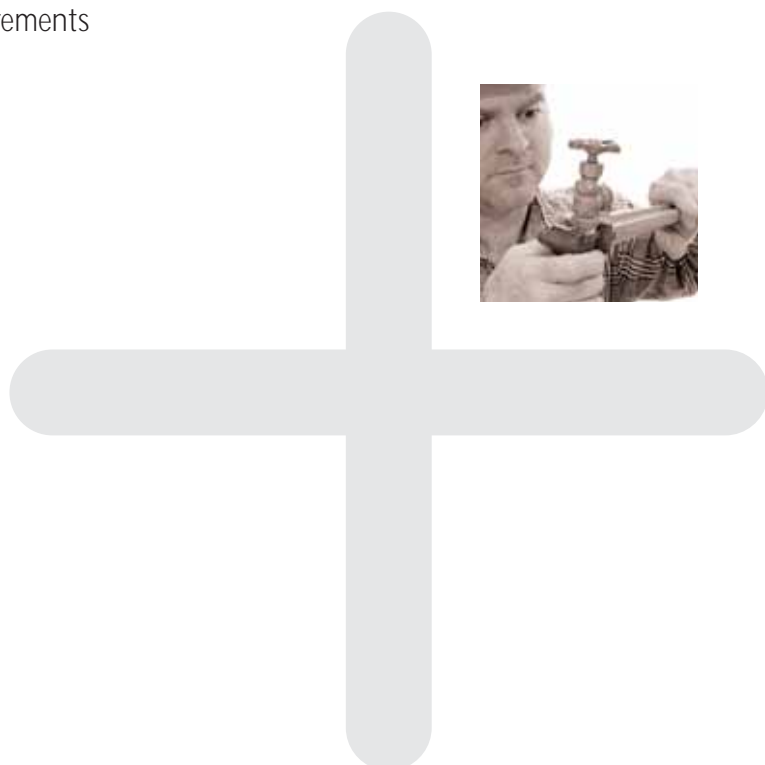
How to get Flow+ in your next project

If you have a client that would benefit from a full hydraulic design, contact us with a set of plans. We will complete the design and price it via your merchant of choice.

ph: +64 9 273 9191

fax: +64 9 273 9194

email: info@waterware.co.nz





Key components



Caleffi 535 Series Pressure Reducing Valve



The water coming from the mains supply in New Zealand is generally too high and variable to be applied directly to domestic house systems. Pressure reducing valves stabilise this pressure making the water suitable for use around the home. The Caleffi 535 series of pressure reducer valves makes it easy to get the pressure perfect with an easy adjustment dial and indicator screen. Once set the valve will continue to keep the pressure at the correct level until next adjusted. The internal cartridge, containing all the regulating components, comes pre-assembled as a 'self contained unit' to facilitate inspection and maintenance operations.



Caleffi 523 Series Tempering Valve



A tempering valve ensures that water arrives at your tap or shower at the perfect temperature every time. It delivers this constant temperature even when there are temperature and pressure variations in the hot and cold supply that are being mixed. This particular range delivers a very high level of accuracy and stability of temperature regulation and has been designed for houses which are likely to demand high flow rates.



Pexal Macro-composite Pipe System



This pipe system has been formed by encasing an aluminium pipe within two layers of cross linked polyethylene. This combination of materials gives it the heat retention advantages of plastic and the noise minimisation strengths of metal. A complete range of forged brass fittings can be crimped into place using stainless steel sleeves. This pipe and fitting range can be installed directly into the ground, concrete slab, within wall cavities or on the building envelope exterior.



Fondital Tahiti Gas Boilers



These gas boilers are Italian made and will perform at over 90% efficiency with very low emission levels and near silent operation. They are easy to use, reliable and safe. Some of the models incorporate condensing technology which further reduce fuel costs and decrease polluting emissions.



Ferroli Diesel Boilers



These boilers use a three pass heat exchanger which makes them over 90% efficient. They are also very clean, with air emissions exceeding strict European standards for air quality, as well as being very quiet. Their front access design makes them easy to maintain and clean.



Project Description

Job Detail

Address: _____

Client name: _____ ph: _____ email: _____

Company name (contact person): _____ ph: _____ email: _____

Architect: _____ ph: _____ email: _____

Builder: _____ ph: _____ email: _____

Plumber: _____ ph: _____ email: _____

Waterware representative: _____

Site Detail

Approximate distance to dwelling boundary: _____

Street pressure max/min: _____

Irrigation system: yes no

Natural Gas available: yes no

Floor plan attached: yes no

Dwelling fit out

Maximum occupancy: _____

Fittings	Qty	Details	
showers	_____	_____	*Litres/min each
baths	_____	_____	Litres to fill
basin taps	_____	_____	
kitchens	_____	_____	
laundries	_____	_____	
toilets	_____	_____	
hose taps	_____	_____	
irrigation system	_____	_____	Max flow rate and pressure demand
other	_____	_____	

*Provide shower head manufacturers recommended flow rates

Energy Preferences

Electric Natural Gas LPG Diesel Solar

Other Systems

Hydronic underfloor heating yes no

Radiator central heating yes no

Heated pool yes no

Solar system yes no

Filtration system yes no

Rainwater collection yes no

Limitations and Conditions

- Flow+ solutions satisfy the mandatory requirements of the G12 Building Code.
- Flow+ designs cannot overcome pressure or flow limitations in the upstream supply
- Third party products may be required to satisfy particular requirements or to ensure the best fit solution.
The WaterwareTech team will recommend these third party products when appropriate but cannot accept responsibility for warranty or performance issues.
- If your project has over twenty bathrooms it may fall outside the scope of Flow+.



Waterware Group
P O Box 58776, Greenmount, Auckland
Telephone +64-9-273 9191
Fax +64-9-273 9194
info@waterware.co.nz
www.waterware.co.nz