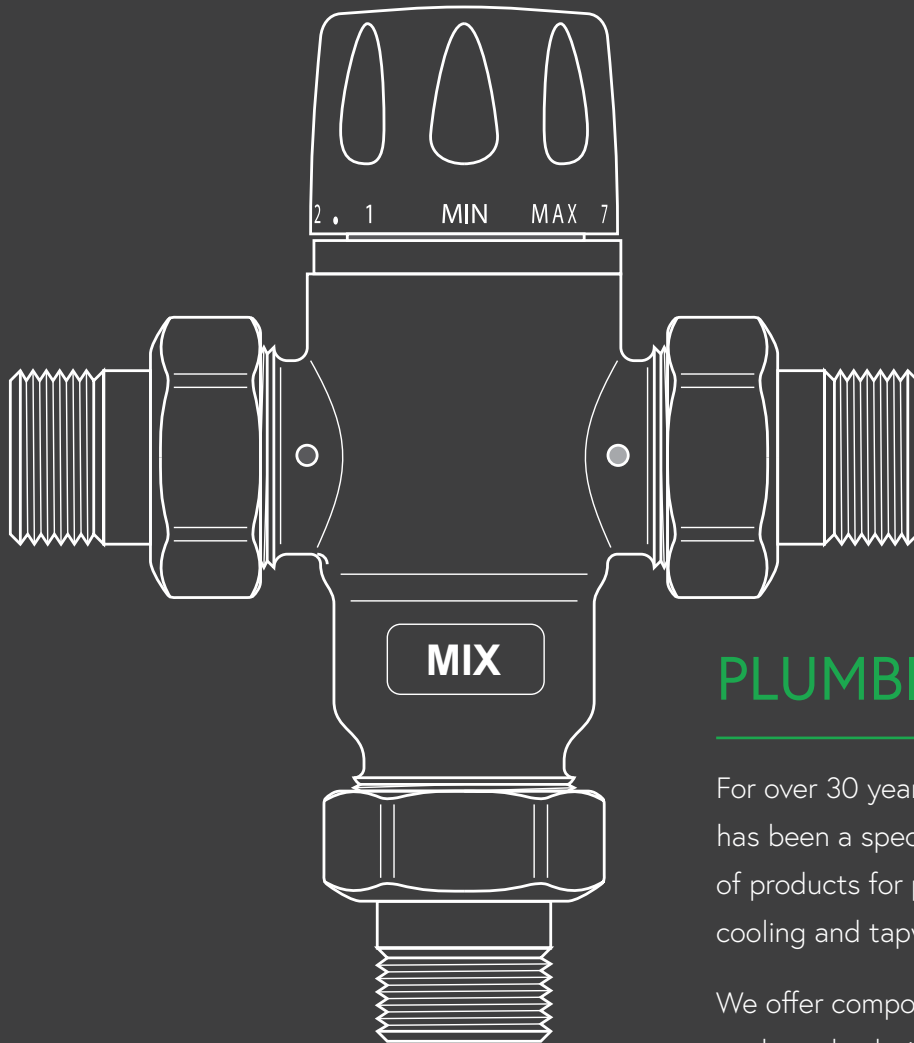


WATERWARE



PLUMBING

For over 30 years Waterware New Zealand has been a specialist importer and distributor of products for plumbing, central heating and cooling and tapware Nationwide.

We offer components, equipment and or packaged solutions for bathrooms, kitchens, plumbing and central heating. Our technical plumbing and heating products come from leading European manufacturers for which we can guarantee product quality and assured after sales service. The technical team offer a free service to assist in the correct specification, installation and troubleshooting of the extensive valve range.



CALEFFI IS A GLOBAL LEADER IN THE PLUMBING AND HEATING SECTOR. RESPECTED INTERNATIONALLY FOR THEIR INNOVATIVE DESIGN AND HIGHLY AUTOMATED PRODUCTION FACILITY BASED IN NOVARA ITALY, THEY ARE ONE OF THE FEW PRODUCERS LEFT WHO MANUFACTURE AND ASSEMBLE ALL OF THEIR PRODUCTS IN ITALY.

Their expertise is the control of temperature, pressure and flow of water-based fluids. Caleffi's products range from control valves, balancing devices and flow switches to zone relays and heat meters.

Waterware has been the exclusive supplier of Caleffi components in New Zealand for over 30 years and has helped it become an industry standard throughout the country.

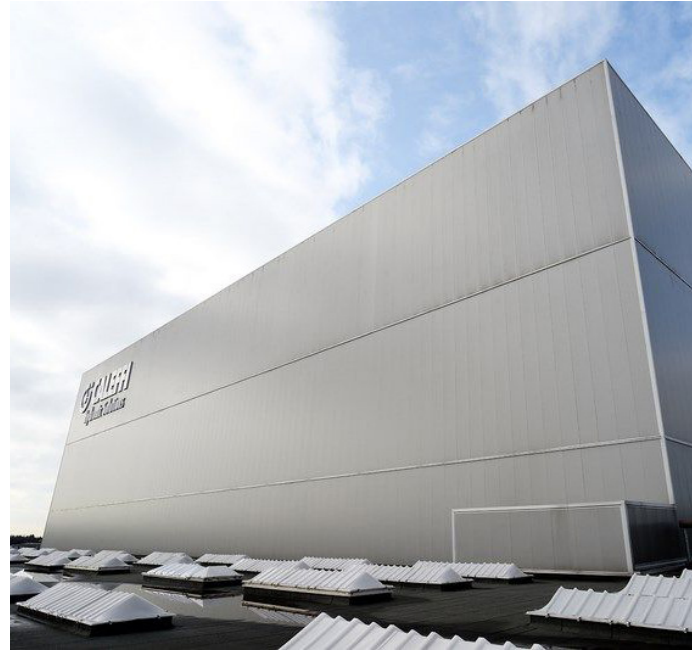
All Caleffi products are of the highest standard and tested through the most rigorous environment, so the customer can be assured they are getting the best quality.

Waterware works closely with Caleffi in designing components that fit the New Zealand market.

THE WATERWARE WAY

If you are in the plumbing industry then you are probably familiar with the combo set which is now an industry standard.

What you may not know is it was originally the brainchild of Waterware's founder Graham Yearsley in 1989.



TEMPERING VALVES

POINT OF USE TEMPERING

TMV521319 | 5213TMV 20MM
TEMPERING VALVE

These valves are for single point of use with high temperature ringmains, they include isolators and check valves, suitable for mains pressure.

TV521319AU | 5213 20MM
NHS TEMP VALVE

These valves are for single or multi point of use with high temperature ringmains, they include check valves, suitable for mains pressure.



GENERAL USE TEMPERING

TV20L | 5216 20MM TEMPERING VALVE WITH COLD CHECK

These valves are for multi point of use installed at the hot water cylinder, they include check valves, are suitable for mains or low pressure.



RINGMAINS

TV600051 | 6000 20MM LEGIOMIX

These valves are electronic mixing valves for ringmain installations. BMS input and output compatible, data logging built in, extremely high flow rates, suitable for mains and low pressure.

TV523150 | 5231 20MM HEAVY DUTY TEMPERING VALVE

These valves are thermostatic mixing valves for ringmain installations. High flow rates, suitable for mains and low pressure.



PRESSURE REDUCING VALVES

APARTMENT USE

PR533451H | 533 SERIES 20MM HIGH TEMPERATURE

Suitable for hot and cold water, designed for apartment use with up to 1600kpa on the inlet



DOMESTIC USE

PRV20 | 533 SERIES PRESSURE REDUCING VALVE

Suitable for cold water supply, adjustable from 100 to 600kpa, flow rate up to 50l/min



COMMERCIAL USE

PR535051 | 535 SERIES PRESSURE REDUCING VALVE 20MM

Up to 2,500 kpa input, adjustable from 100 to 600 kpa output, up to 60°C water

PRV6/20 | 536 SERIES PRESSURE REDUCING VALVE 20MM

Up to 2,500 kpa input, adjustable from 50 to 600 kpa output, up to 80°C water



COMBO SETS

STANDARD COMBO SET

COMBO20A | TYPE A COMBO SET

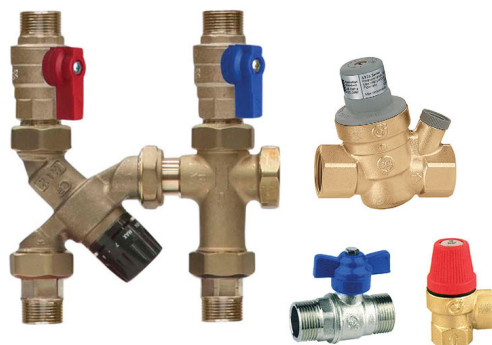
A manifold style combo set for quick installation on traditional HWC's



PROTANK COMBO SET

COMBO2020PRO | 20X20MM PROTANK COMBO SET

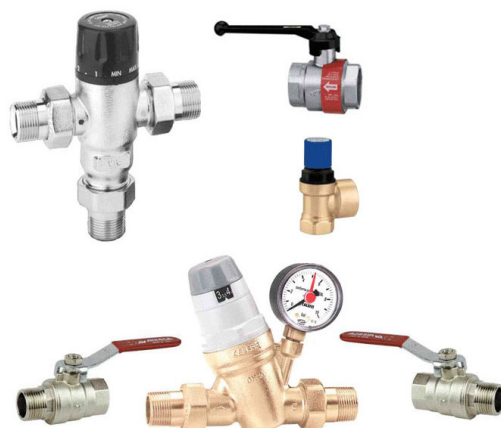
A manifold style combo set for quick installation on top connection HWC's. 20 & 25mm versions, Ringmain ready.



HIGH CAPACITY COMBO SET

COMBO25 | 25MM COMBO SET

A 25mm combo set for high flow rate systems.





PROTANK HOTWATER CYLINDERS WERE DESIGNED BY WATERWARE FOR NEW ZEALAND IN 2015 AND ARE NOW ONE OF THE MOST SOUGHT AFTER CYLINDERS IN COMMERCIAL PLUMBING

Some of the frustrations installing hot water cylinders is that they are heavy, awkward to carry and time consuming to install. So when Darren Yearsley sat down to re-design a cylinder for the New Zealand market he looked at how he could successfully remove these issues, while still having a robust, efficient hard work cylinder, and so the Protank was born.

The Protanks are constructed from '2304 duplex' stainless steel with a 20 year limited warranty. They are suitable for ring main applications on request.

THE WATERWARE WAY

Making life easy for the customer is a pre-requisite for Waterware, the Protank is an example of this innovative thinking. The Protank is the first hot water cylinder in the New Zealand market which is designed from the ground up with installation in mind. The integration of the valve kit within the cylinder design allows savings.



ELECTRIC CYLINDERS

WITH VALVE SET

PTC120, PTC180

Mains pressure electric hot water cylinder for indoor installations. Supplied complete with a Caleffi direct mount mono-block combo set which includes every primary valve required to complete an installation.



WITH VALVE SET AND TWO DIRECT SOLAR PORTS AND THREE THERMOSTAT PROBE POCKETS

PTC250D, PTC300D, PTC350D, PTC400D

Mains pressure electric hot water cylinder for indoor installations. Supplied complete with a Caleffi direct mount mono-block combo set which includes every primary valve required to complete an installation.



INDIRECT CYLINDERS

250L PROTANK INDIRECT HWC SINGLE COIL + SOLAR + VALVE SET

PTC250I, PTC300I, PTC350I, PTC400I

Indirect hot water cylinders are designed for a high capacity, mains pressure, domestic hot water system using an indirect heat source such as a gas, diesel or wood fired boilers and or solar energy.



DIRECT CYLINDERS

500L AND 1000L

CYSC500, CYSC1000

These tanks are used for high demand hot water production using either the indirect high output 'Habanero' heat exchanger module, or as a standalone buffer tank for direct water heaters.



HABANERO MODULE

EXTERNAL HEAT EXCHANGER

CYSH100, CYSH200

In place of the traditional coil in tank style calorifier, together with RM Cylinders, Waterware have developed an external heat exchanger module which manifolds directly into the accumulators pre-arranged ports. This allows a significantly higher kW transfer than would normally be possible if using internal heat exchange coils while also retaining the full 500L or 1000L storage capacity. The result is large volume hot water production for less cost and a smaller foot print. The 500L and 1000L share the same convenient tapping size and positions which will accept both the 100kW or 200kW 'Habanero' modules.



INSTALLATION KITS

1000KPA INSTALLATION KITS

CYSC1000KHP, CYSC500KHP

- 1 x LVP1200kPa Pressure Relief Valve
- 1 x Caleffi 1000kPa Cold Water Expansion Valve
- 1 x Caleffi Temperature Gauge
- 1 x Primary Thermostat



800KPA INSTALLATION KITS

CYSC1000K, CYSC500K

- 1 x Caleffi 1000kPa Pressure Relief Valve
- 1 x Caleffi 800kPa Cold Water Expansion Valve
- 1 x Caleffi Temperature Gauge
- 1 x Primary Thermostat





B METERS IS AN ITALIAN COMPANY THAT HAS BEEN DESIGNING, PRODUCING AND DISTRIBUTING INSTRUMENTS AND SOLUTIONS FOR MEASURING THE CONSUMPTION OF WATER AND ENERGY USED FOR HEATING AND COOLING, FOR OVER 25 YEARS.

Waterware is the exclusive supplier of BMeters in New Zealand since 2016. Being Italian they pride themselves on manufacturing quality and design, as well as the ability to customise and manage complex issues. They are constantly looking to the future for increased integration between product and monitoring systems.

THE WATERWARE WAY

Waterware is always looking for solutions to make our customers lives easier and BMeters is no different.

The BMeters system allows complete flexibility in reading options, dial read, walk-by, centralized on-site and centralized off-site are all options in the BMeter family. The technical team can assist in specifying, configuring and commissioning systems.



WATER METERS

WMBUS15SC & WMBUS15SH | 15MM COLD & HOT MBUS READY

Watermeter body for connected systems, hot and cold, 15mm to 50mm



TRANSMITTERS

WMBUSWLESSS7 | MBUS WIRELESS TRANSMITTER (TO SUIT SC&SH) 867MHZ

Wireless transmitters for Hydrolink systems

WMBUSWIRED | MBUS WIRED MODULE TO SUIT SC&SH

Wired transmitter for MBUS BMS systems



RECEIVERS

WMBUSRPT867 | SIGNAL REPEATER

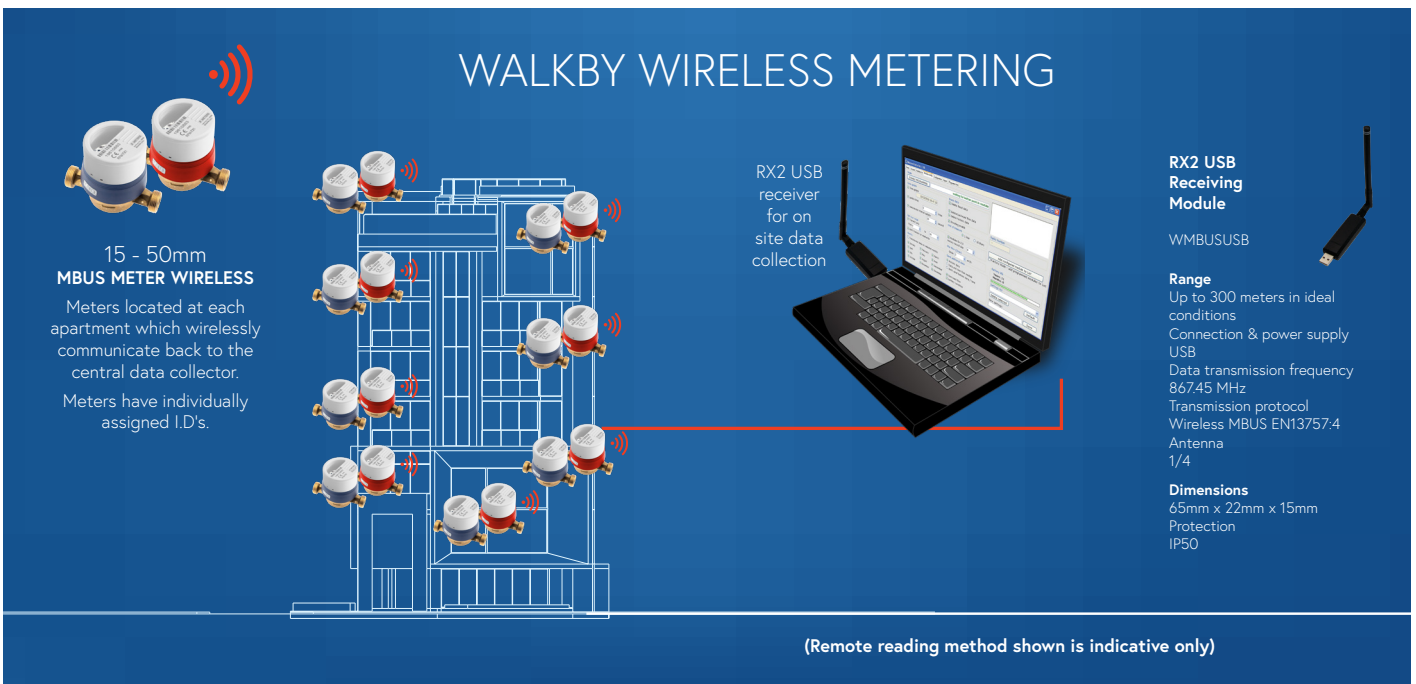
Wireless repeater for extending Hydrolink system range

WMBUSUSB867 | MBUS USB WIRELESS RECEIVER

Receiver aerial for walkby & onsite systems

WMBUSGPRS867 | GPRS TRANSMITTER

GPRS receiver for offsite systems



Above: Example of how a walkby wireless metering system works.



EUROTIS IS RECOGNISED TO BE THE WORLD LEADERS IN THE PRODUCTION OF CSST CORRUGATED 316L STAINLESS STEEL TUBE (WITH HIGH RESISTANCE TO PRESSURE AND DEFORMATION) FOR PLUMBING SYSTEMS

Eurotis products offer a wide variety and stands out for quality, safety and quickness of installations. The flexi Eurotis tube has been well received in the New Zealand market and offers quick and adaptable solutions to various projects.

THE WATERWARE WAY

Waterware has sourced the innovate product to facilitate the quick and flexible final connection from the plumbing system to the boiler, heat pump and hot water cylinder. With fully customizable length and shape, the time saving and ability to quickly disconnect is a lifesaver.



PIPE COILS

EUROTIS (DN12) 316 CSST WATER COIL

15mm, 20mm, 25mm, 32mm

AISI 316L stainless steel CSST tubes
EUROWATER line Corrugated pliable CSST tubes, AISI 316L stainless steel, suitable for drinking water (*), 0,3 mm thick.



FITTINGS

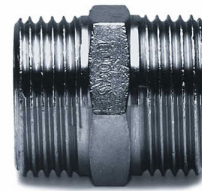
EUROTIS (DN12) SWIVEL NUTS (X10)

15mm, 20mm, 25mm, 32mm



EUROTIS (DN12) FLAT FACED NIPPLE (X10)

15mm, 20mm, 25mm, 32mm



TOOLS

EUROTIS (DN12-25) MANUAL FLANGING TOOL

15-32mm



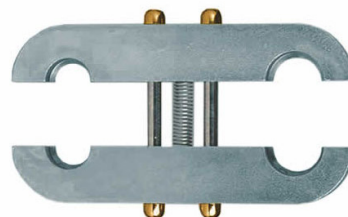
EUROTIS (DN12-25) PIPE CUTTER

15-32mm

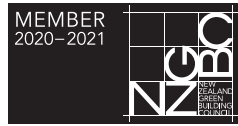


EUROTIS (DN12-15) FLANGING TEMPLATE

15-32mm



Proud members of



WATERWARE

waterware.co.nz
info@waterware.co.nz
+64 9 273 9191

