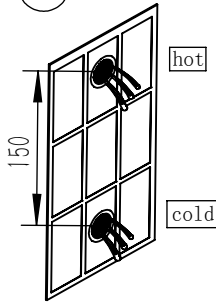


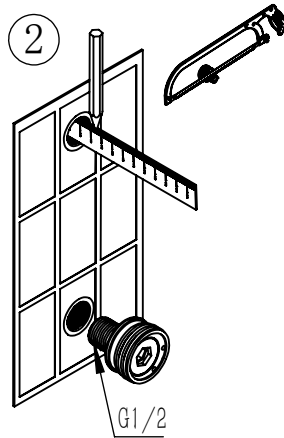
1



Make sure cold & hot water pipes installed at 1050mm height. Flush the pipes before installation.

Make sure the middle distance btw the two pipes are 150mm, and allow 5mm adjustment.

2

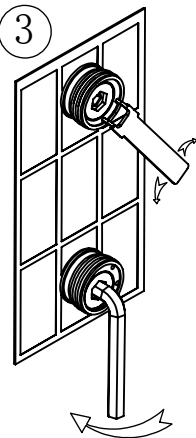


Measure the depth of the inner thread of cold & hot water pipes and mark it.

This is to have NO gap left btw the wall and brass connector.

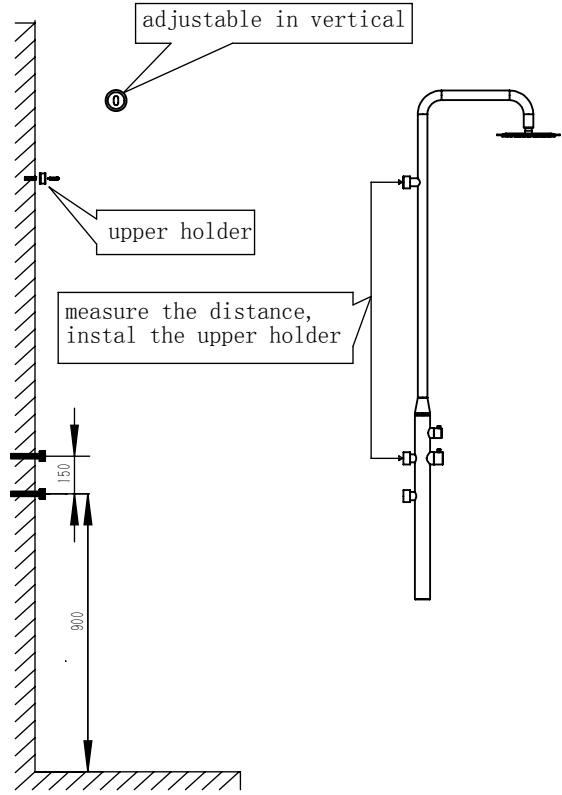
Cut the extra length of the outer thread of the brass connector at marked length.

3



Then tighten the two brass connectors to the cold & hot water pipes.

4

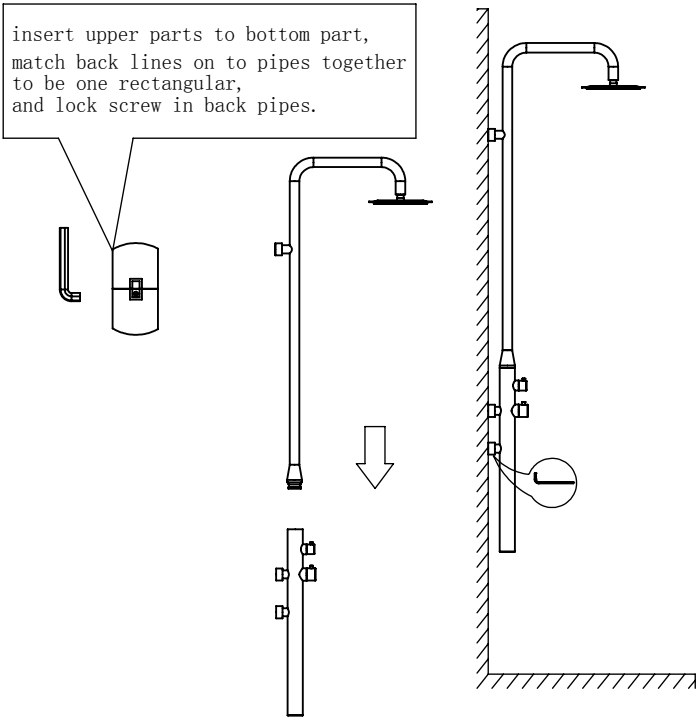


adjustable in vertical

upper holder

measure the distance, install the upper holder

5



insert upper parts to bottom part, match back lines on to pipes together to be one rectangular, and lock screw in back pipes.

insert upper part to upper holder, lower parts to the two brass connectors, then tighten the screws. Connect the separate shower head if have, and instal handshower and hose to hose inlet, then all installations are done.

# Indoor Shower Faucet Simple Installation Manual

