

# PUSPC25SS

Swiss Pump Co. 25mm Stainless Circulating Pump



## Technical Specification

Speeds: 3

Power: 55w, 70w, 100w, 230v @ 50hz

Peak flow: 1.5m<sup>3</sup>/h, 2.5m<sup>3</sup>/h, 3.5m<sup>3</sup>/h

Peak head: 2.5m, 4.5m, 6m

Pump body: Stainless steel

Impeller: Plastic

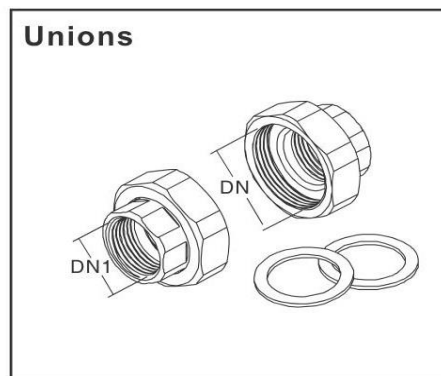
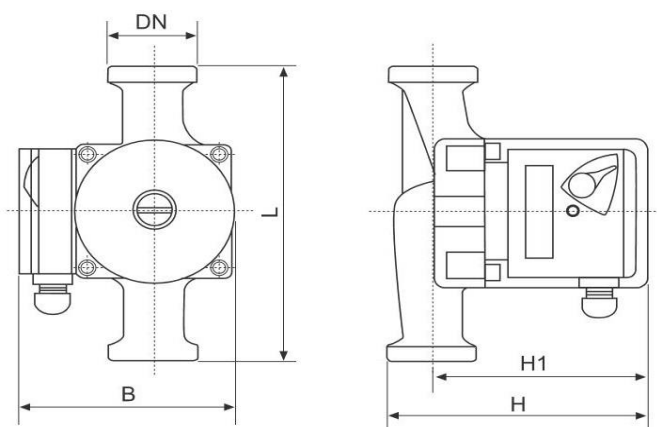
Shaft: Ceramic

Bearings: Ceramic

Liquid temperature: 2°C to 65°C

Ambient temperature: up to 40°C

Max. working pressure: 10bar



MODEL	DN	POSITION	P1 (w)	IN (A)	SIZE (mm)				G.W (KG)	UNIONS	
					H	H1	L	B		DN	DN1
SCP25-6S	G1½"	3	100	0.45	130	105	180	130	3.34	G1½"	G1"
		2	70	0.35							
		1	55	0.25							

## Warranty

5 Years parts and labour

## Features

SCP is Circulating pump research and developed by scientific research personnel of our company.

SCP pump has following merits: no leakage, low noise, environmental protection, beautiful appearance, convenient installation, run responsible and so on. It is designed special for heating system and it can be used to supply water and add pressure for mansions of city, villa of suburb, house, to match with industrial equipment, to supply water in cycle for cooling air-condition, boiler and solar energy, supply hot water and keep warm in cycle.

Pump casing with suction and delivery connections with the same diameter and on the same axis(in-line).

Cast iron body recirculating pump with 25mm union connections.