

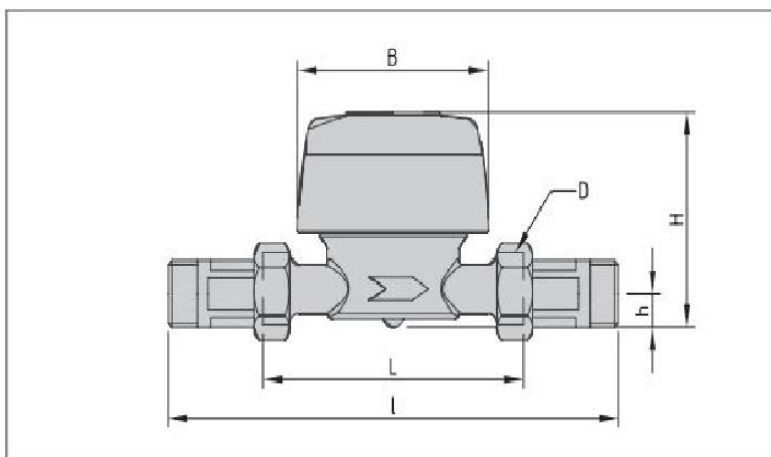
# WMBUS15SC

BMETERS 15mm Cold MBUS Ready Water Meter



## Technical Specification

- Max Flow Rate Qmax: 3m<sup>3</sup>/h
- Nominal Flow Rate Qn: 1.5m<sup>3</sup>/h
- Transitional flow rate ±2%: 120l/h
- Min flow rate ±5%: 30l/h
- Min reading: 0.05l
- Max reading: 99.999m<sup>3</sup>
- Max admissible pressure MAP: 16bar



Calibro Size	mm	15	
	in	(1/2")	
L	mm	110	
l	mm	190	
H	mm	73	
h	mm	18	
B	mm	85	
d	mm	3/4"	
Pesi Weight	con raccordi with unions	kg	0,65
	senza raccordi without unions	kg	0,50

## Application

The BMETERS 15mm Cold MBUS Ready Water Meter is used in plumbing systems to measure water quantity and is installed mostly in plant rooms.

## Warranty

[Download the latest warranty statement](#)

## Features

15mm MBUS ready, single jet, dry dial, direct reading cold water up to 30°C

- Mbus output via Optical interface
- Available with Wired or Wireless Mbus output using WMBUSWLESSS867 867MHZ wireless or Wired
- Magnetic transmission
- Brass Body
- Complete with 15mm connection tails