

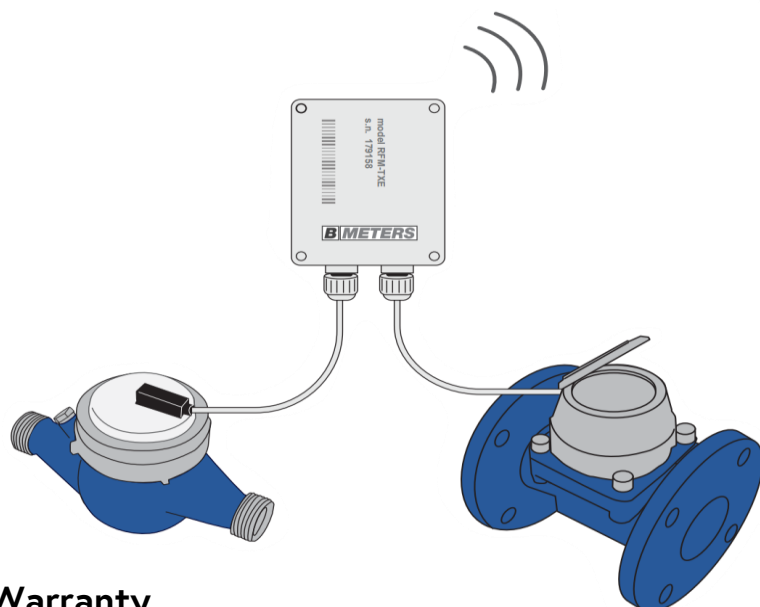
WMBUSTXE

BMETERS Pulse to 868MHz MBUS Converter



Technical Specification

- Transmission frequency / power: 868MHz / less than 10mW
- Power supply: 3.6V Lithium battery (replaceable)
- Battery life 10 years + 1 year of data storage (in normal working conditions)
- Working temperature: from -10°C to +55°C
- Operational mode: Wireless
- Configuration: Wireless
- Sensor reading: 2 inputs pulse REED sensors
- Shielding rate IP65
- Dimensions: 30mm x 67mm x 67mm
- Data transmission frequency: Programmable
- Data transmission encryption: Optional
- Type of reading: Monodirectional



Warranty

[Download the latest warranty statement](#)

Features

TXE Pulse meter converts a regular pulse meter to an 868MHz MBUS data transmitter for up to 2 pulse meters.