

# WMIBUS25H

BMETERS 25mm MBUS Hot Meter



## Technical Specification

- Below specifications measured at R100H↑
- Overload flow rate Qmax: 7.875m<sup>3</sup>/h
- Permanent flow rate Q3: 6.3m<sup>3</sup>/h
- Transitional flow rate: 100.8L/h
- Min flow rate Q1: 63L/h
- Sensitivity: 10l/h
- Min reading: 0.05l
- Max reading: 99.999m<sup>3</sup>
- Max admissible pressure MAP: 16bar

The meter can be installed according to what is indicated on the dial

- H: horizontal water flow
- V: vertical water flow
- ↑= dial on top
- = dial on the side

The meter can be installed with horizontal flow with the dial on the top, or on the side, or vertical with upwards or downwards flow. Horizontal installation with dial downward is prohibited.

## Application

The BMETERS 25mm MBUS Hot Meter is used in plumbing systems to measure water quantity and is installed mostly in plant rooms.

## Warranty

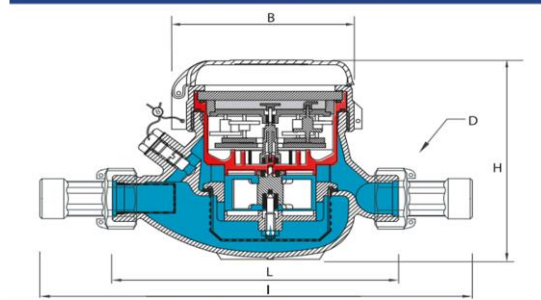
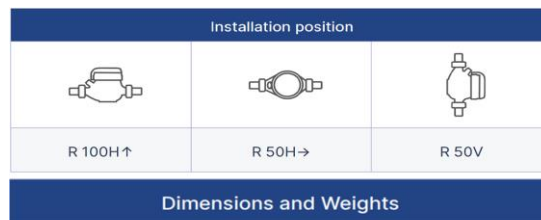
[Download the latest warranty statement](#)

## Features

- Multi-jet, dry dial, magnetic transmission with 360° rotating lid. Versions for cold water (50°C) and hot water (90°C).
- Inductive pre-equipment for the installation of data communication modules:
  - MBUS Wireless: WMIBUSWLESS
  - MBUS Wired: WMIBUSWIRED
  - Pulse: WMIBUSPULSE3
- Hot water 30°C-90°C
- Magnetic transmission
- Direct reading on 5 numeric rolls
- Dry dial
- 360° rotating lid (DN15-DN32)

### DIMENSIONS:

L x W x H = 360mm x 104mm x 117mm



Calibro - Size	DN (in)	25 (1")	32 (1 1/4)	40 (1 1/2)	50 (2")
L	mm	260	260	300	300
I	mm	360	380	440	460
H	mm	117	117	153	172
B	mm	104	104	126	160
D	in	1 1/4	1 1/2	2"	2 1/2"
Pesi Weight	Kg	2,09	2,18	4,38	4,46-9,40

