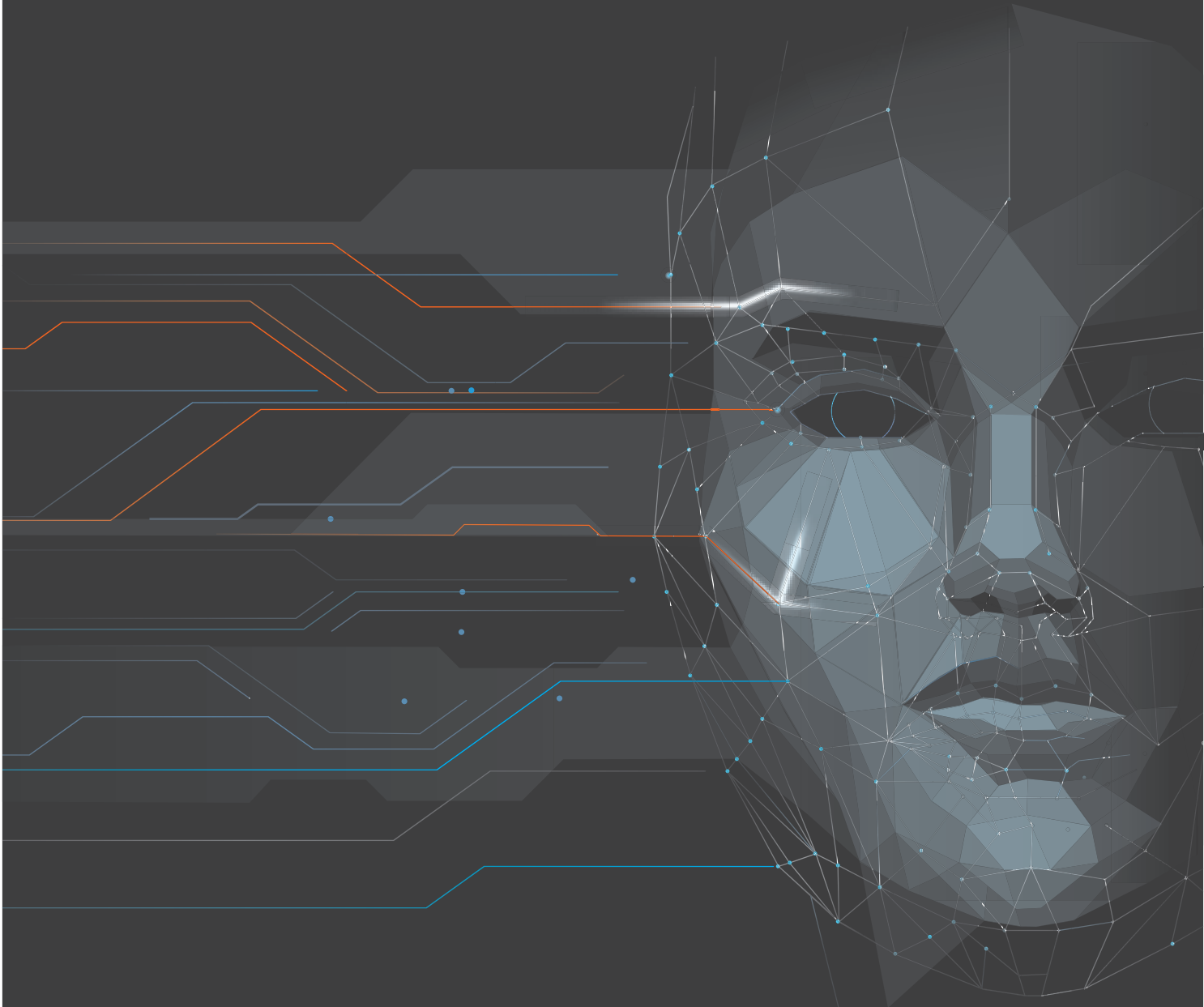


●●●●
WATERWARE

HEATING & COOLING



Heatpro

DESIGN SERVICE

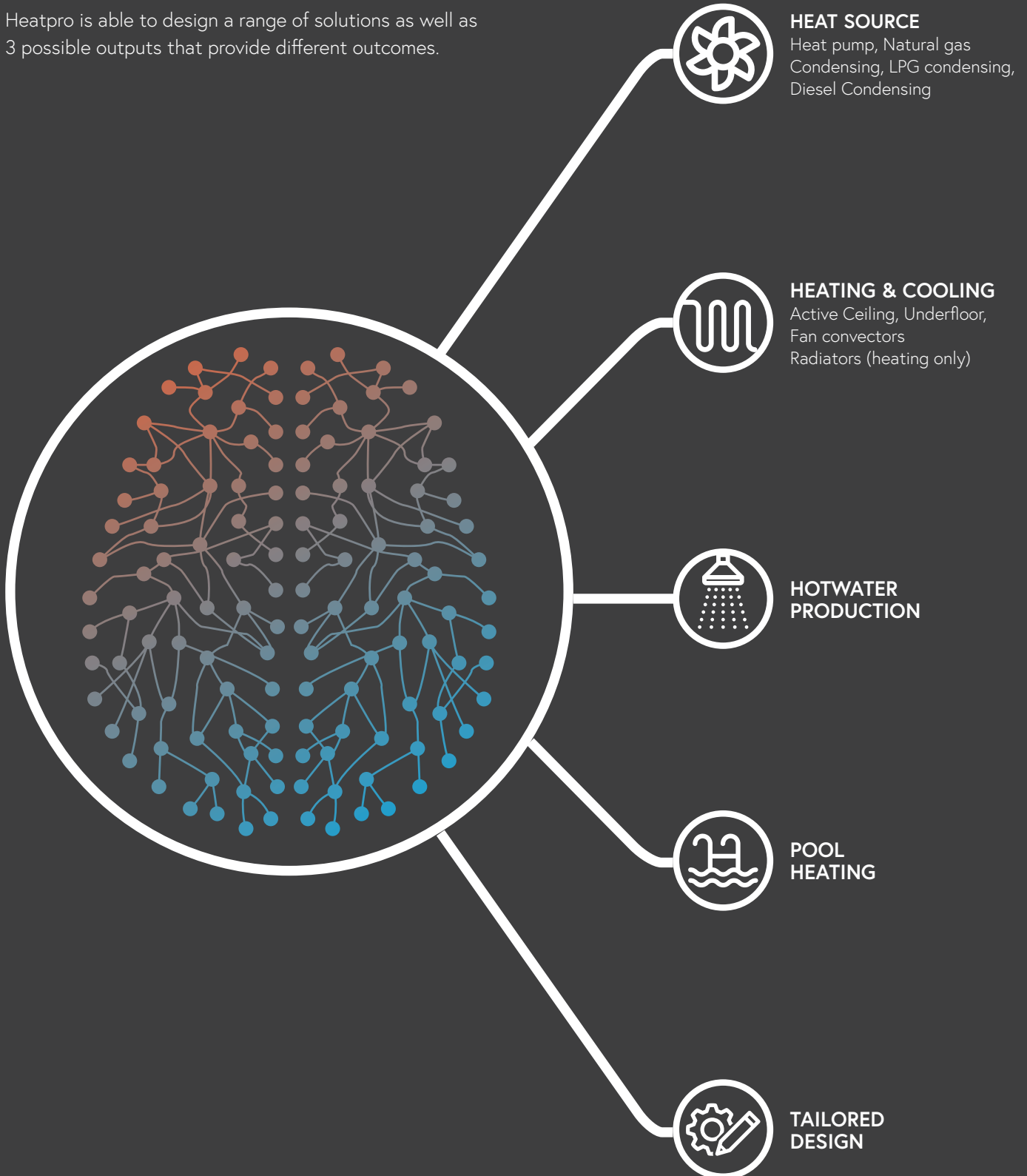
waterware.co.nz

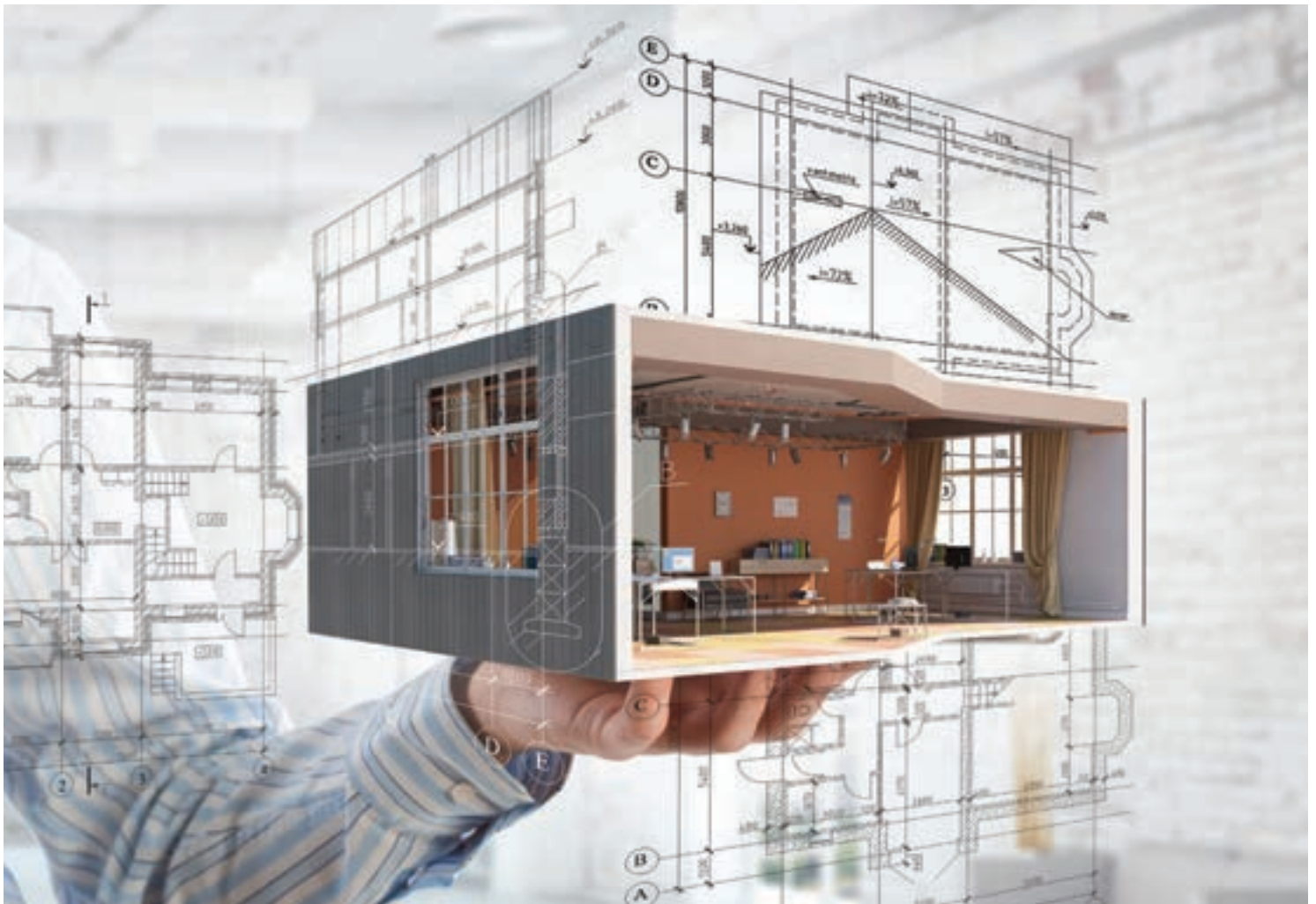
What is Heatpro?

Heatpro is a design tool created by Waterware that creates a heating and cooling solution for a home or commercial build.

It is effectively a brain that is capable of working out which components best fits your system and the quantities you will need to have the most effective solution.

Heatpro is able to design a range of solutions as well as 3 possible outputs that provide different outcomes.





Heatpro **RAPID**

Heatpro Rapid is the price estimating service which allows an installer, specifier or retail customer to accurately estimate the finished capital and running costs for specific systems. Excellent for selecting the right type of system to meet the client's needs and setting a realistic cost. Send a floor plan and what the client is trying to achieve and Hal will return the Heatpro Rapid document with all of the details.

Summary:

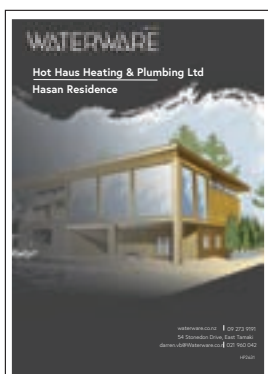
- **Price details:** Heat source, Heating & Cooling system, Hot water, Pool, Controls & Primary pipework
- Estimated installation, estimated running costs
- Retail friendly brochure detailing the system components and capabilities

HeatPro Rapid documents:

Integrated price and retail friendly system description

Key Features:

- Cost estimator service
- Specifically configured to allow installer quotation and setting retail expectations
- Merchant, installer or retail prices available
- With or without installation estimate
- Free of charge
- 24hr turn around
- At least 95% accurate guaranteed



code	description	unit	quantity	unit price	total price
1000	Gas boiler	1	1	1000	1000
1001	Water tank	1	1	500	500
1002	Control panel	1	1	200	200
1003	Pipework	m	100	10	1000
1004	Radiator	1	1	150	150
1005	Underfloor heating	m ²	100	10	1000
1006	Pool	1	1	5000	5000
1007	Controls	1	1	100	100
1008	Primary pipework	m	50	10	500
1009	Hot water tank	1	1	300	300
1010	Installation	1	1	1000	1000
1011	Running costs	1	1	1000	1000
1012	Brochure	1	1	100	100

WHAT IS RADIANT ENERGY?

WHAT IS RADIANT ENERGY? Radiant energy is the energy of electromagnetic waves. These waves can be thought of as particles and are made up of photons. When a photon of energy strikes a surface, it is absorbed, and the energy is converted into heat. This is how radiant energy is used for heating and cooling.

HOW WATERWARE RADIANT HEATING & COOLING SOLUTIONS CAN BENEFIT YOUR HOME OR BUSINESS?

Waterware radiant heating and cooling solutions offer a range of benefits for your home or business. They are energy efficient, quiet, and provide even heating and cooling throughout the space. They are also easy to install and maintain.

KEY BENEFITS OF RADIANT ENERGY:

- Energy efficient
- Quiet
- Even heating and cooling
- Easy to install and maintain

Vaillant aroTHERM Plus

Key features:

- Energy efficient
- Quiet
- Easy to install and maintain

Why choose Vaillant?

Vaillant is a leading manufacturer of heating and cooling solutions. Our products are reliable, efficient, and easy to use. We offer a range of services to help you choose the right solution for your home or business.

Celeffi Underfloor systems

Key features:

- Energy efficient
- Quiet
- Even heating and cooling

Why choose Celeffi?

Celeffi is a leading manufacturer of underfloor heating systems. Our products are reliable, efficient, and easy to use. We offer a range of services to help you choose the right solution for your home or business.



Heatpro DESIGN

Heatpro Design is the specification service which returns a line by line specification for every component in a system. This allows the installer or merchant to order the system and manage the finer points of every installation. Send a floor plan and scope for type of system or Heatpro Rapid estimation and the design team will return the Heatpro Design document with all of the details.

Summary:

- Line by line specification of every component
- **Price details:** Heat source, Heating & Cooling system, Hot water, Pool, Controls & Primary pipework
- Estimated installation, estimated running costs
- Retail friendly brochure detailing the system components and capabilities
- Technical document detailing installation, wiring and parameter requirements
- Colour coded zone map & system diagram with hydraulic and wiring connections
- Optional Loopcad (\$50 charge, non-refundable)

Key Features:

- Specification service
- Specifically configured for the granular detail required for product ordering and installation
- Merchant, installer or retail prices available
- With or without installation estimate
- \$100 charge per design, \$100 credit if 95% of the quotation or more is ordered
- \$50 charge per Loopcad (non-refundable)
- Approximately 5 working day turn around

HeatPro Designed documents:

1. Price pages
2. Retail friendly system description
3. Installer friendly technical description
4. Zone and schematic diagrams
5. **Optional Loopcad (\$50)**





Heatpro ENGINEERED

Heatpro Engineered is the heat loss and specification service which produces a heat loss model for the building and returns a line by line specification for every component in a system to meet the performance criteria set by the model. This provides granular detail to the performance of the system and allows the installer or merchant to order the system. Send a full set of plans and type of system and the design team will return the Heatpro Engineered document with all of the details.

Summary:

- Full heatloss calculations with loopcad & output tables, Powered by WILLMS
- Line by line specification of every component
- **Price details:** Heat source, Heating & Cooling system, Hot water, Pool, Controls & Primary pipework
- Estimated installation, estimated running costs
- Retail friendly brochure detailing the system components and capabilities
- Technical document detailing installation, wiring and parameter requirements
- Colour coded zone map & system diagram with hydraulic and wiring connections

Key Features:

- Coming soon
- HeatPro Designed powered by WILLMS
- Full heat loss calculations
- Specifically configured for the granular detail required for product ordering and installation supported by an engineering model
- Merchant, installer or retail prices available
- With or without installation estimate
- \$500 charge per design
- Approximately 10 working day turn around

HeatPro Engineered documents:

1. Full heat loss calculations, powered by WILLMS.
2. Price pages
3. Retail Friendly system description
4. Installer friendly technical description
5. Zone and schematic diagrams





Introducing Hal,
*Heating up the HeatPro Rapid
design service.*



Heatpro

RAPID

PROFILE

Name: Hal Eniac

Favourite Quote: "I feel the need...the need for speed"
Tom Cruise

BIO:

What's most important to Hal: Speed and accuracy. You can quite often hear him say "My world revolves around two things: speed, estimating and accuracy" as he chuckles to himself.

Hal lives to provide optimal results in the shortest time possible. Hal heads up the HeatPro Rapid design service, although he is new in his roll he is able to navigate a floorplan and provide the customer with the most efficient system to suit their needs in a timely and accurate fashion.

Hal is quick to learn and takes his input from the rest of the team, over time he becomes more and more accurate.

Hals favours radiant heating and cooling as it creates the most uniform comfort for homes and/or commercial properties. It is healthier, better for the environment and has low running costs.

For a better and brighter New Zealand, Hal's goal is to make the whole country radiant

Purpose

Hal was created to help improve a customers journey in receiving the best possible radiant heating and cooling solution to suit their budget and needs. He is responsible for speed, accuracy and the continuous growth of HeatPro and its services.

Hal compares creating the perfect system to splitting the atom, under the right conditions both can create a powerful solution with the most efficient use of energy.

Emotions

What makes Hal Happy?

Hals happy place is driving Heatpro Rapid, and gets a kick out of freeing up the rest of the team to work on other projects. He thrives on creating an enjoyable journey for all those involved.

Pain Points

Hals biggest pain point is that there isn't enough time in the day, he works 24/7 already but would really prefer if there was 25 hours in a day.

He wants an accurate and informative brief so creating the quote can be a fast and accurate process and is happy to produce many options for every house for the client to compare the capital and running costs.

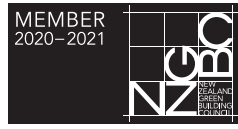
Other Interests

Hal likes interacting with humans on MMO games online. His favourite games consist of Command and Conquer and The Sims

Hal also likes watching TV/movies and finds movies about alien life fascinating.

Hal also told us once that Elon Musk is definitely not of this earth.

Proud members of



WATERWARE

waterware.co.nz
info@waterware.co.nz
+64 9 273 9191

