



# WATERWARE

## HEATING



# ComfortZone

AFFORDABLE RADIANT HEATING PACKAGE

[waterware.co.nz](http://waterware.co.nz)



● ABOUT  
● WATERWARE

## We're Waterware

Since 1989, our passion has been delivering quality in all things plumbing, central heating and cooling, and bathroomware.

Waterware is proudly New Zealand owned and operated. From the outset we've been supporting the market with technical and design knowledge, helping deliver solutions that are functional, intuitive and beautiful.

We're working hard to make your life easier. Waterware are innovators setting the pace in New Zealand with hydraulic radiant heating and cooling technology, high-performance plumbing fittings, and on-trend bathroomware.

## What we do

### Bathroom

Hand-picked from across the globe, our bathroomware combines impeccable design and unmatched quality for looks that are sure to wow.

We've partnered with our factories to design products that Kiwis are proud to use, as well as introducing new materials and technologies to suit the local market.

### Radiant Heating & Cooling

Ditch noisy blasts of hot or frigid air, drafts, and dust. Waterware are leaders in radiant heating and cooling powered by hydronic solutions, with three technologies available for superior comfort in commercial and residential applications.

### Plumbing

If you want clever designs, greater aesthetics, more sustainable material choices, and manufacturing processes that are considerate to our environment, then we have the products and solutions for you.

### The Solutions Suite

In engineering, a bigger hammer would do it – but smarter problem solving does it better. Talk to us about innovation, and how we can solve your bathroom, plumbing, heating, and cooling issues with customised solutions.



## Our commitment

We're on a mission to make lives easier with plumbing, central heating and cooling, and bathroomware solutions that look great and perform their best.

Waterware is constantly evolving to lead the market while reflecting our values of integrity, bold thinking, and genuine partnerships with everyone we interact with. We want to create environments of success for everyone involved.

We take special pride in our pre- and post-sales service experience, and our impressive network of business relationships around the world. Over the years, we've connected with thousands of like-minded partners to help us source products that suit our local market and perform better than any others.

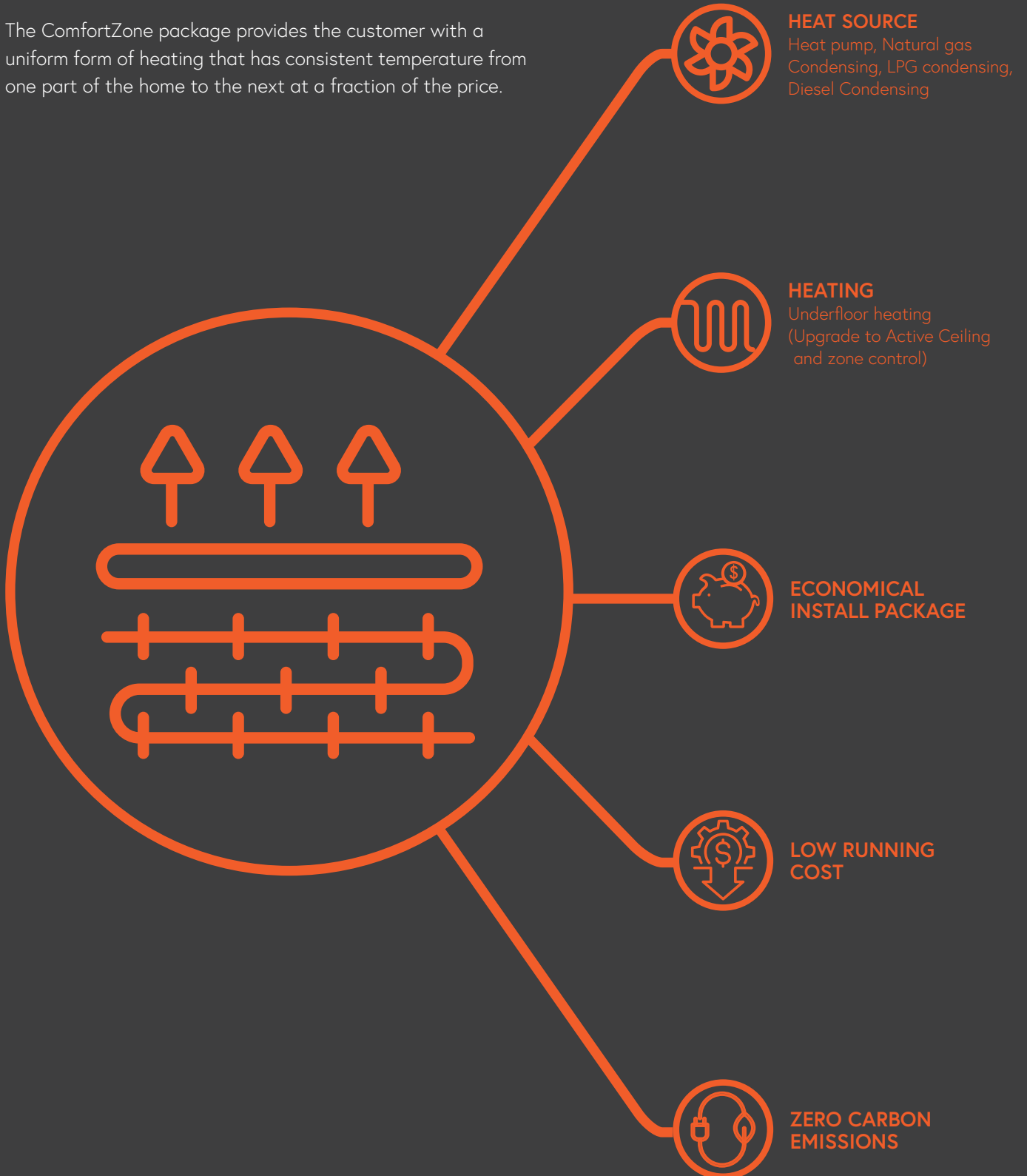
Our products are supported by our extensive range of spare parts, and our in-house Installer Training and Warranty Assurance programmes, so you can rest assured that you'll be taken care of.

# What is ComfortZone?

Waterware has developed an affordable, premium underfloor heating package that will tip the scales when choosing heating for customers homes.

It has been our goal to provide New Zealanders an economical opportunity of complete comfort through the cold winter months.

The ComfortZone package provides the customer with a uniform form of heating that has consistent temperature from one part of the home to the next at a fraction of the price.



# What comes in the package

ComfortZone is predominantly designed as an underfloor heating solution for single level homes. We have based our pricing on 100mm<sup>2</sup> - 250mm<sup>2</sup> floor plans, however other options will be available on request.

All packages come with a pre slab, pre line and final fix kit, which include the necessary components to complete your project.

The quantities and pricing are based on the size of each project. The Waterware technical team will put together a detailed system and technical description as well as zone and schematic diagrams for each ComfortZone package.

## PRE SLAB KIT

Kit components include: Underfloor pipe, mains pipework & fittings.

## PRE LINE KIT

Kit components include, Underfloor manifold, underfloor probe, Neo flushbox.

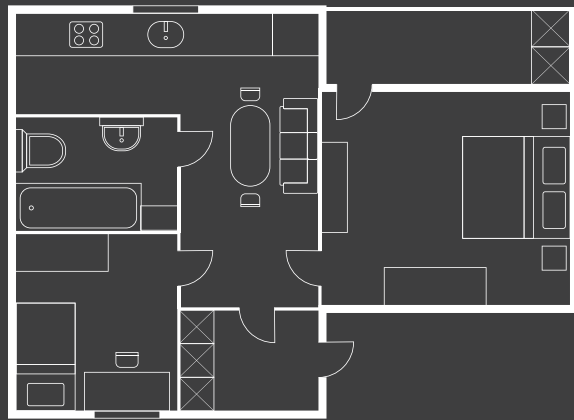
## FINAL FIX KIT

Kit components include: Heat pump, HP installation kit, thermostat, fittings.



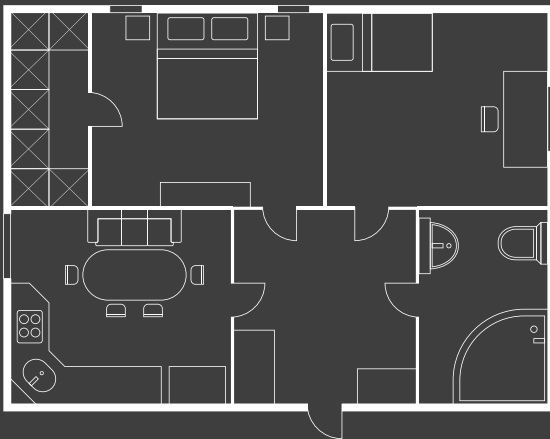
### 100mm<sup>2</sup> Floorplan - \$18,000 incl GST\*

*(Estimated price is the combined value of the pre slab, pre line and final fix kits)*



### 150mm<sup>2</sup> Floorplan - \$22,000 incl GST\*

*(Estimated price is the combined value of the pre slab, pre line and final fix kits)*



### 200mm<sup>2</sup> Floorplan - \$27,000 incl GST\*

*(Estimated price is the combined value of the pre slab, pre line and final fix kits)*



### 250mm<sup>2</sup> Floorplan - \$31,200 incl GST\*

*(Estimated price is the combined value of the pre slab, pre line and final fix kits)*





## Upgrading the package

ComfortZone also comes with some extra options to upgrade if the customer has a multiple level home or wants more level of control throughout the house.

All optional extras come with the kit components needed to complete the project.

### MESSANA ACTIVE CEILING

Kit components include: Active ceiling panels (2 per room), screws, manifold, zone pipework & fittings, mains pipework and fittings

- Active ceiling kit, 3 rooms - \$5,800 incl GST\*
- Active ceiling kit, 4 rooms - \$6,700 incl GST\*
- Active ceiling kit, 5 rooms - \$8,000 incl GST\*

### SUB ZONE CONTROL

Kit components include: Thermostats, flush boxes, actuators, wiring station & manifold bypass

- Sub zone control kit, 3 rooms - \$1,300 incl GST\*\*
- Sub zone control kit, 4 rooms - \$1,650 incl GST\*\*
- Sub zone control kit, 5 rooms - \$2,000 incl GST\*\*



\*Based on retail pricing estimate, including installation

\*\*Based on retail pricing estimate excluding installation





## AIR-TO-WATER VARIABLE SPEED HEAT PUMP IN-HOME HEATING SOLUTION

Heat your whole home efficiently with the RITTER THERMAL Variable Speed Heat Pump. Unlike fixed speed motors, the variable speed motor adjusts to operate at the best speed to achieve your target temperature under different working conditions.

This improved operating efficiency means more comfortable living spaces and a lower energy bill. The hydronic RITTER THERMAL Variable Speed Heat Pump comes in two different capacities in order to supply your home with the optimum heating comfort.

In order to provide our customers with high quality, strong reliability and good versatility product, this heat pump is produced by strict design and manufacture standards.



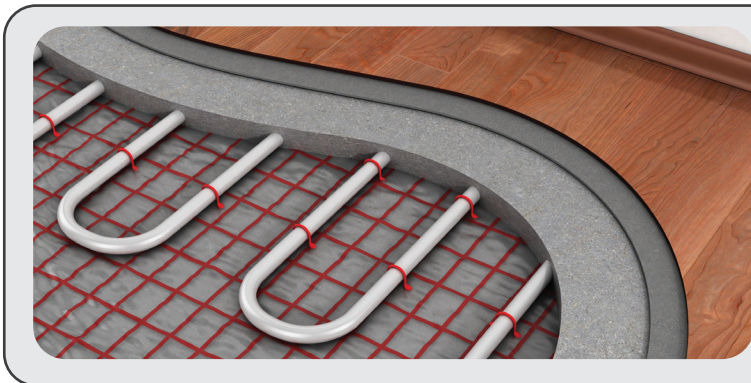




# heatmiser®

## Heatmiser neoStat Thermostat

Multiple neoStats are used to build a network of wired or wireless thermostats throughout your home. Modern touch button technology and an intuitive menu navigation is simple for the home owner to program and operate.



# Rbm

Passion for innovation

## RBM Kilma Flex Underfloor Pipe

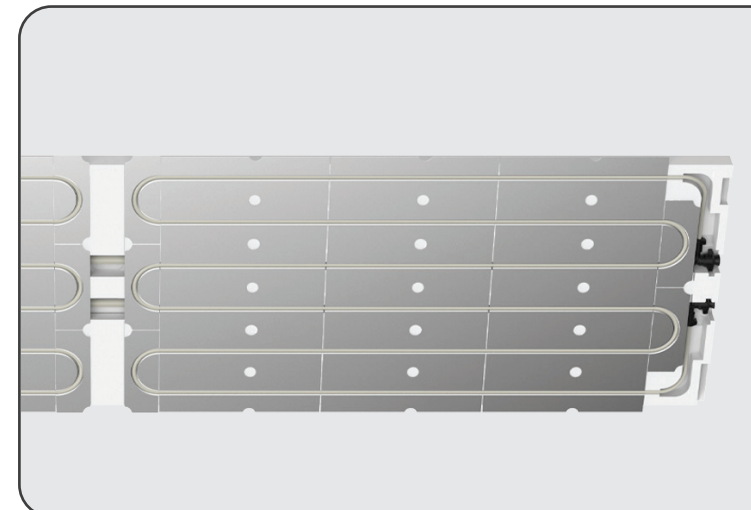
Multilayer piping systems heat from the floor slab in your home. Surface and underfloor heating ensures even distribution of heat throughout the living space.



# CALEFFI

## Caleffi Composite Distribution Panel

Central manifold to collect the pipes from each zone and connect them to the system. Allows options for balancing and zone control. Each area can be controlled at different temperatures to maximise the comfort in the zone and minimise running costs.



## UPSTAIRS OPTION

# messana

## Messana Active Ceiling Panels

The panel sits behind the gib turning the ceiling into an active radiant surface. In the winter it adds heat to the environment to maintain a comfortable uniform temperature, in summer it absorbs heat to gently cool your home's interior environment.

*Proud members of*



# WATERWARE

[waterware.co.nz](http://waterware.co.nz)  
[info@waterware.co.nz](mailto:info@waterware.co.nz)  
+64 9 273 9191

