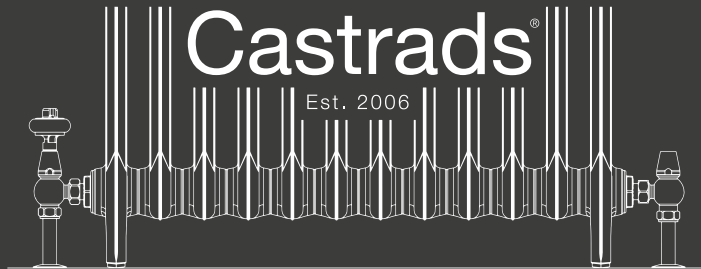


••••

WATERWARE

waterware.co.nz | 0800 WATERWARE

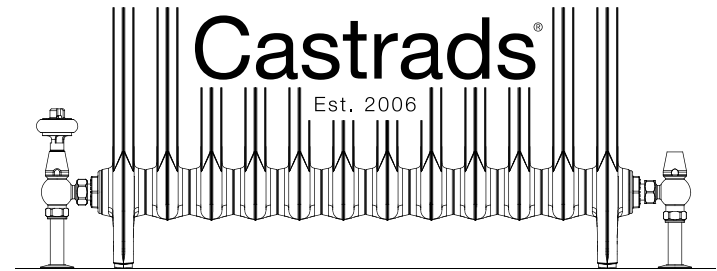


Custom Radiators, Unique Homes

Product Brochure

Manchester | London | Brooklyn | Manhattan | Poland



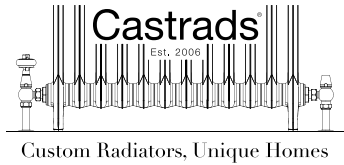


Custom Radiators, Unique Homes

Manchester | London | Brooklyn | Manhattan | Poland



Mercury 3 Column 660mm 12 sections in Paint & Paper Library Plaster V with Windsor Satin Nickel TRV and Whitworth wall stay.



A FRESH APPROACH TO HOME HEATING

Castrads produce beautiful, custom radiators built to your specific requirements. We're a family-run company, manufacturing in Manchester, UK, since 2006. With a lifespan of centuries, our cast iron radiators are sustainability heavyweights. A solid choice for your unique home.



UK
CA



CE

Emmeline | 665mm 10 sections in Chalk with Windsor Polished Brass TRV Whitworth wall stays.



Rococo I 560mm 6 sections in Beaten Brass with Chatsworth Natural Brass TRV.

CONTENTS

CAST IRON RADIATORS	P. 12 - 65
CAST IRON FINISHES	P. 69 - 75
STEEL COLUMN RADIATORS	P. 80 - 95
BATHROOM RADIATORS	P. 97 - 109
RADIATOR VALVES	P. 112 - 123
WALL STAYS	P. 124 - 127
HOME CONSULTATION SERVICE	P. 128 - 129
IRONSHIELD GUARANTEE	P. 130
EXPLAINERS & MEASURING GUIDES	P. 131 - 139

CAST IRON RADIATORS

A carefully curated range of styles, an unrivalled choice of finishes. Custom sizing up to 2.5m long with automatic temperature control (see page 108). Made to order, built to last.



Grace 4 Column 500mm 11 sections in Astral Grey Dark with Windsor Satin Nickel TRV.



MERCURY

A modern column radiator designed by Castrads.



MERCURY

Delicate V-detailing on crisp columns, elegantly tapered feet and flawlessly blended top curves.

Mercury 2 Column

Available in 3 heights

70mm deep

Mercury 3 Column

Available in 4 heights

101mm deep

Mercury 4 Column

Available in 6 heights

140mm deep

Mercury 6 Column

Available in 2 heights

215mm deep



MERCURY 2 COLUMN
the detail

MERCURY 2 COLUMN

Model	S _{Max}	Output	Dimensions		
			Height	Depth	Length
Mercury 2 Column 460mm	18	35 Watts	460mm	70mm	58mm
Mercury 2 Column 760mm	18	59 Watts	760mm	70mm	58mm
Mercury 2 Column 960mm	18	74 Watts	960mm	70mm	58mm



These models may also be wall mounted. Speak to us about wall-hanging options.
Outputs per section at ΔT50. Height includes legs. Length is per section.

S_{Max} - Maximum size for delivery in one piece. Available up to 40 sections with partial home assembly.



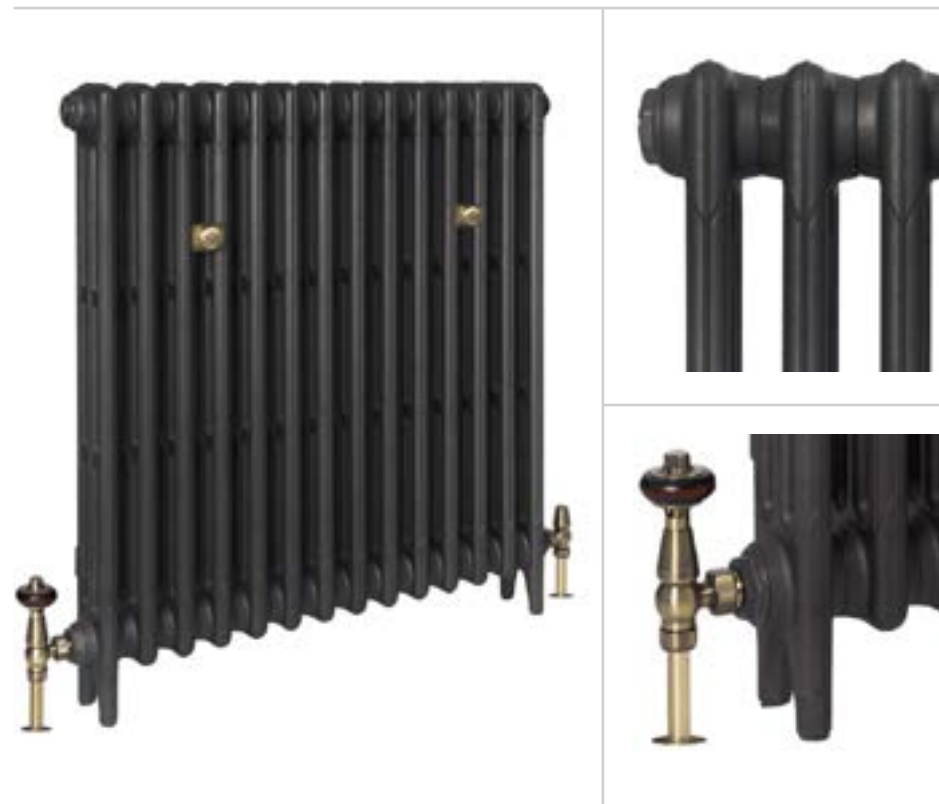
MERCURY 3 COLUMN *the detail*

MERCURY 3 COLUMN

Model	S _{Max}	Output	Dimensions		
			Height	Depth	Length
Mercury 3 Column 560mm	18	54 Watts	560mm	101mm	58mm
Mercury 3 Column 660mm	18	66 Watts	660mm	101mm	58mm
Mercury 3 Column 760mm	18	78 Watts	760mm	101mm	58mm
Mercury 3 Column 860mm	18	87 Watts	860mm	101mm	58mm

These models may also be wall mounted. Speak to us about wall-hanging options.
Outputs per section at ΔT50. Height includes legs. Length is per section.

S_{Max} - Maximum size for delivery in one piece. Available up to 40 sections with partial home assembly.

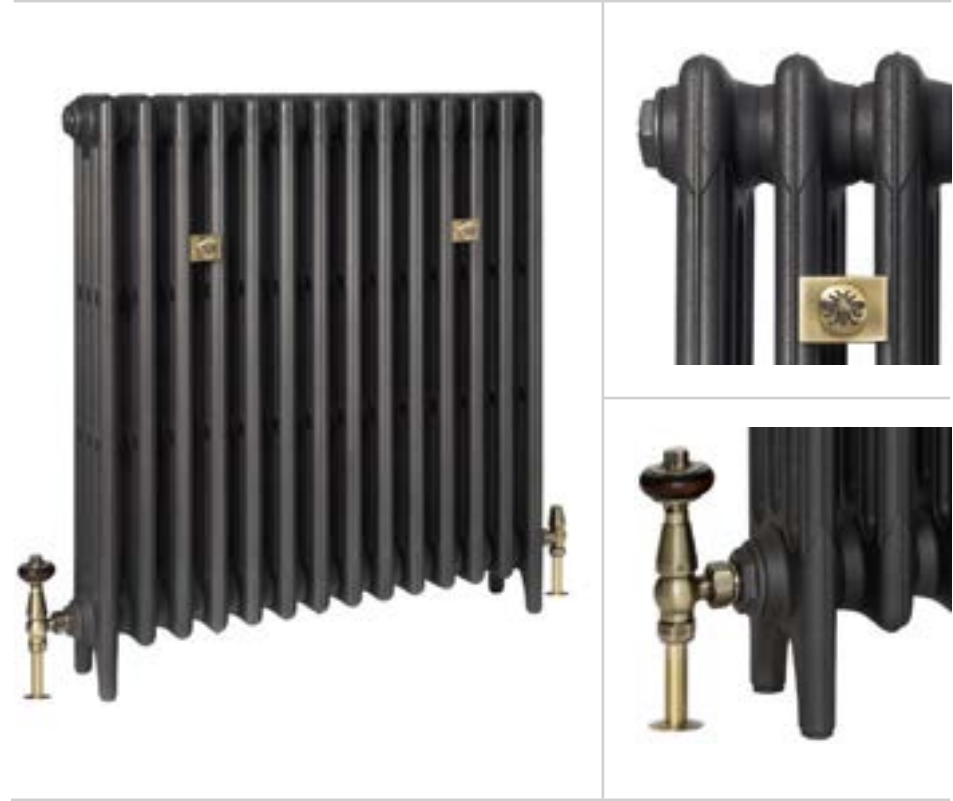




MERCURY 4 COLUMN
the detail

MERCURY 4 COLUMN

Model	S _{Max}	Output	Dimensions		
			Height	Depth	Length
Mercury 4 Column 360mm	18	44 Watts	360mm	140mm	58mm
Mercury 4 Column 460mm	18	58 Watts	460mm	140mm	58mm
Mercury 4 Column 560mm	18	69 Watts	560mm	140mm	58mm
Mercury 4 Column 760mm	16	96 Watts	760mm	140mm	58mm
Mercury 4 Column 860mm	15	109 Watts	860mm	140mm	58mm
Mercury 4 Column 960mm	14	121 Watts	960mm	140mm	58mm



Outputs per section at ΔT50. Height includes legs. Length is per section.
S_{Max} - Maximum size for delivery in one piece. Available up to 40 sections with partial home assembly.



MERCURY 6 COLUMN *the detail*

MERCURY 6 COLUMN

Model	S _{Max}	Output	Dimensions		
			Height	Depth	Length
Mercury 6 Column 360mm	18	63 Watts	360mm	215mm	58mm
Mercury 6 Column 960mm	10	171 Watts	960mm	215mm	58mm





GRACE

A distinctive design with crisp, defined lines.



GRACE

A fluted profile and inclined feet with staggered spacing between columns for extra interest.

Grace 2 Column

Available in 4 heights

89mm deep

Grace 4 Column

Available in 5 heights

175mm deep

Grace 6 Column

Available in 4 heights

254mm deep



Grace 4 Column 500mm 8 sections in Full Polish with Windsor Satin Nickel TRV.



GRACE 2 COLUMN
the detail

GRACE 2 COLUMN

Model	S _{Max}	Output	Dimensions		
			Height	Depth	Length
Grace 2 Column 480mm	18	39 Watts	480mm	89mm	60mm
Grace 2 Column 640mm	18	50 Watts	640mm	89mm	60mm
Grace 2 Column 740mm	18	59 Watts	740mm	89mm	60mm
Grace 2 Column 1040mm	16	82 Watts	1040mm	89mm	60mm



These models may also be wall mounted. Speak to us about wall-hanging options.
Outputs per section at ΔT50. Height includes legs. Length is per section.

S_{Max} - Maximum size for delivery in one piece. Available up to 40 sections with partial home assembly.



GRACE 4 COLUMN
the detail

GRACE 4 COLUMN

Model	S _{Max}	Output	Dimensions		
			Height	Depth	Length
Grace 4 Column 360mm	18	44 Watts	357mm	175mm	60mm
Grace 4 Column 500mm	18	65 Watts	504mm	175mm	60mm
Grace 4 Column 660mm	18	85 Watts	660mm	175mm	60mm
Grace 4 Column 760mm	16	97 Watts	760mm	175mm	60mm
Grace 4 Column 960mm	14	127 Watts	960mm	175mm	60mm



Outputs per section at ΔT_{50} . Height includes legs. Length is per section.

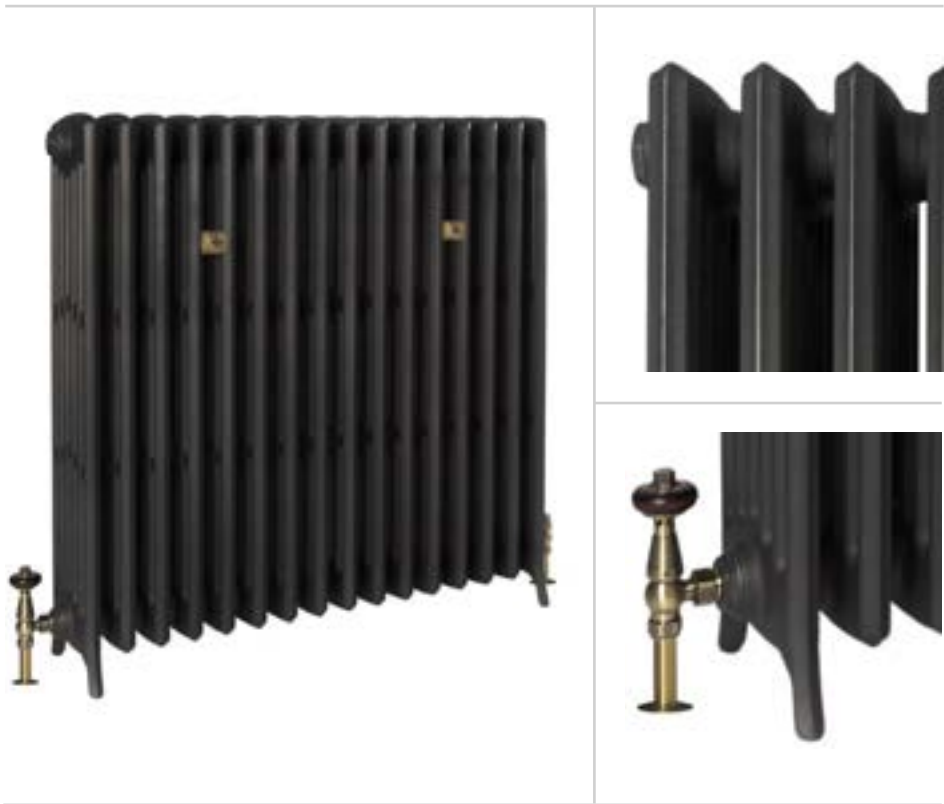
S_{Max} - Maximum size for delivery in one piece. Available up to 40 sections with partial home assembly.



GRACE 6 COLUMN
the detail

GRACE 6 COLUMN

Model	S _{Max}	Output	Dimensions		
			Height	Depth	Length
Grace 6 Column 485mm	16	89 Watts	485mm	254mm	60mm
Grace 6 Column 660mm	12	120 Watts	660mm	252mm	60mm
Grace 6 Column 760mm	10	141 Watts	760mm	254mm	60mm
Grace 6 Column 960mm	8	175 Watts	960mm	250mm	60mm



Outputs per section at ΔT_{50} . Height includes legs. Length is per section.
S_{Max} - Maximum size for delivery in one piece. Available up to 40 sections with partial home assembly.



NEPTUNE

A school radiator with a modern twist.



NEPTUNE

Modern curves and a ridged shoulder make Neptune a bold feature in contemporary interiors.

Neptune II

Available in 4 heights

180mm deep

Neptune III

Available in 4 heights

200mm deep



Neptune II 520mm in Beaten Brass with Windsor Natural Brass TRV.



NEPTUNE II
the detail

NEPTUNE II

Model	S _{Max}	Output	Dimensions		
			Height	Depth	Length
Neptune II 520mm	14	86 Watts	520mm	180mm	80mm
Neptune II 620mm	12	103 Watts	620mm	180mm	80mm
Neptune II 720mm	10	124 Watts	720mm	180mm	80mm
Neptune II 920mm	8	161 Watts	920mm	180mm	80mm



Outputs per section at ΔT_{50} . Height includes legs. Length is per section.
S_{Max} - Maximum size for delivery in one piece. Available up to 40 sections with partial home assembly.

Above left: Neptune II 720mm in Aged Gold. Top right: Neptune II in Natural Brass.
Bottom right: Neptune II in Natural Pewter.



NEPTUNE III
the detail

NEPTUNE III

Model	S _{Max}	Output	Dimensions		
			Height	Depth	Length
Neptune III 520mm	12	98 Watts	520mm	200mm	80mm
Neptune III 620mm	10	119 Watts	620mm	200mm	80mm
Neptune III 720mm	9	138 Watts	720mm	200mm	81mm
Neptune III 920mm	7	176 Watts	920mm	200mm	81mm



Outputs per section at ΔT_{50} . Height includes legs. Length is per section.
S_{Max} - Maximum size for delivery in one piece. Available up to 40 sections with partial home assembly.

Above left: Neptune III 920mm in Lacquered Iron. Top Right: Neptune III in Lacquered Iron.
Bottom right: Neptune III in Farrow & Ball® Pigeon.



EMMELINE

An updated school radiator designed by Castrads.



EMMELINE

With a scalloped topline, gentle contours and refined feet, Emmeline is our own take on a long-established style.

Emmeline I

Available in 3 heights

110mm deep

Emmeline II

Available in 3 heights

150mm deep



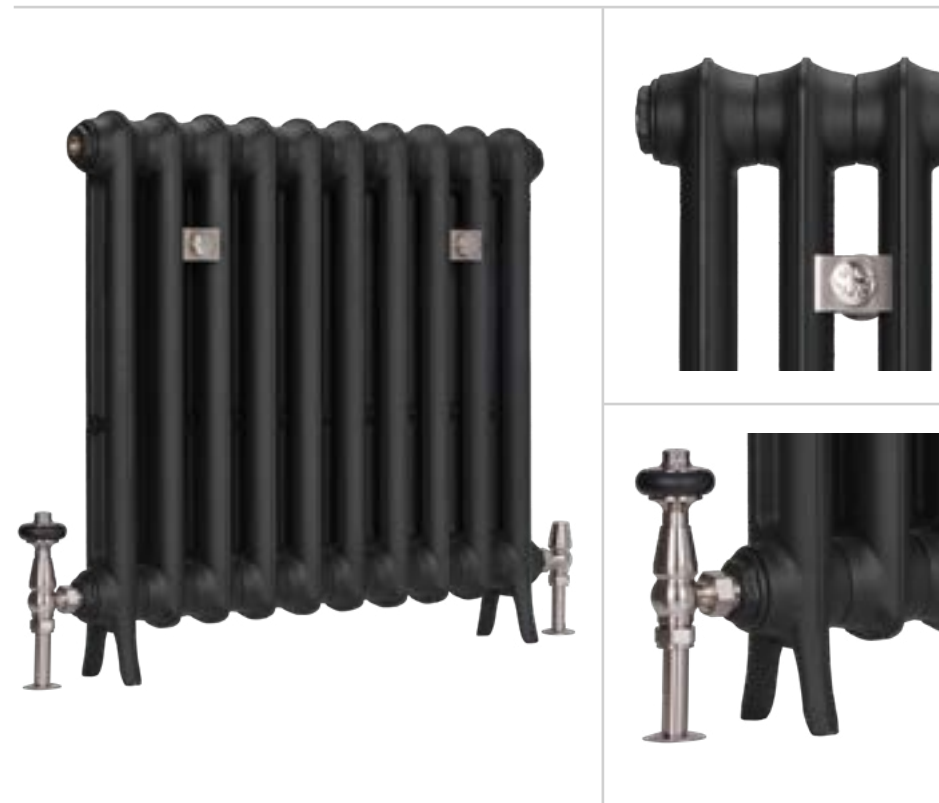
Emmeline I 865mm 12 sections in Benjamin Moore Evening Blue with Windsor Natural Brass TRV, and Whitworth wall stay.



EMMELINE I *the detail*

EMMELINE I

Model	S _{Max}	Output	Dimensions		
			Height	Depth	Length
Emmeline I 465mm	16	45 Watts	465mm	110mm	66mm
Emmeline I 665mm	16	64 Watts	665mm	110mm	66mm
Emmeline I 865mm	16	81 Watts	865mm	110mm	66mm



These models may also be wall mounted. Speak to us about wall-hanging options.
Outputs per section at ΔT_{50} . Height includes legs. Length is per section.

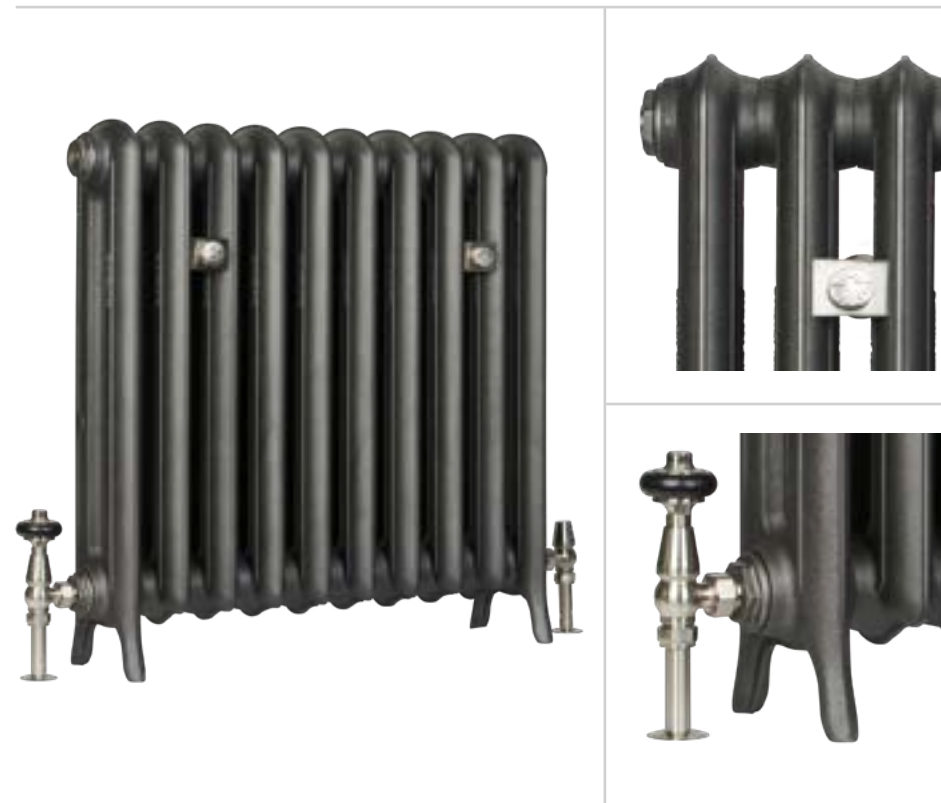
S_{Max} - Maximum size for delivery in one piece. Available up to 40 sections with partial home assembly.



EMMELINE II *the detail*

EMMELINE II

Model	S _{Max}	Output	Dimensions		
			Height	Depth	Length
Emmeline II 470mm	16	57 Watts	470mm	170mm	67mm
Emmeline II 670mm	16	83 Watts	670mm	170mm	67mm
Emmeline II 870mm	13	103 Watts	870mm	170mm	67mm



These models may also be wall mounted. Speak to us about wall-hanging options.
Outputs per section at ΔT_{50} . Height includes legs. Length is per section.

S_{Max} - Maximum size for delivery in one piece. Available up to 40 sections with partial home assembly.



ROCOCO

A statement decorative radiator.



ROCOCO

Featuring an intricate motif of scrolls and flourishes, Rococo is a replica of an original American Radiator Company design.

Rococo I

Available in 3 heights

140mm deep

Rococo II

Available in 4 heights

205 to 220mm deep

Rococo III

Available in 3 heights

256mm deep



Rococo III 970mm 8 sections in Satin Polish with Chatsworth Satin Nickel TRV.

ROCOCO I
the detail



ROCOCO I

Model	S _{Max}	Output	Dimensions		
			Height	Depth	Length
Rococo I 560mm	15	60 Watts	560mm	140mm	76mm
Rococo I 660mm	14	69 Watts	660mm	140mm	76mm
Rococo I 950mm	12	104 Watts	950mm	135mm	76mm



These models may also be wall mounted. Speak to us about wall-hanging options.
Outputs per section at ΔT50. Height includes legs. Length is per section.
S_{Max} - Maximum size for delivery in one piece. Available up to 40 sections with partial home assembly.

Above left: Rococo I 560mm in Astral Grey Mid. Top right: Rococo I in Astral Grey Mid.
Bottom right: Rococo I in Ceramic White.



ROCOCO II
the detail

ROCOCO II

Model	S _{Max}	Output	Dimensions		
			Height	Depth	Length
Rococo II 510mm	14	78 Watts	510mm	220mm	80mm
Rococo II 660mm	11	100 Watts	660mm	205mm	77mm
Rococo II 760mm	11	115 Watts	759mm	215mm	79mm
Rococo II 950mm	8	141 Watts	950mm	205mm	76mm





ROCOCO III
the detail

ROCOCO III

Model	S _{Max}	Output	Dimensions		
			Height	Depth	Length
Rococo III 470mm	13	83 Watts	467mm	256mm	78mm
Rococo III 768mm	10	140 Watts	768mm	256mm	76mm
Rococo III 970mm	7	174 Watts	965mm	256mm	77mm



Outputs per section at ΔT_{50} . Height includes legs. Length is per section.

S_{Max} - Maximum size for delivery in one piece. Available up to 40 sections with partial home assembly.



VULCAN

A pared back wall-hung radiator.





VULCAN

Simple Bauhaus geometry with understated styling for a strong modernist statement.

Vulcan III

Available in 3 heights

90 to 990mm deep

Wall-hung model



Vulcan III 690mm 10 Sections in Etch-coated Polish, with Windsor Satin Nickel corner TRVs.



VULCAN III
the detail

VULCAN III

Model	S _{Max}	Output	Dimensions		
			Height	Depth	Length
Vulcan III 420mm	18	57 Watts	421mm	99mm	60mm
Vulcan III 570mm	18	73 Watts	570mm	99mm	60mm
Vulcan III 690mm	18	85 Watts	684mm	90mm	60mm



This model is wall-hung and must be mounted on a suitably strong substrate.
Outputs per section at ΔT50. Height includes legs. Length is per section.
S_{Max} - Maximum size for delivery in one piece. Available up to 40 sections with partial home assembly.

Above left and right: Vulcan III 690mm 10 Sections in Etch-coated Polish.
Bottom right: Vulcan III 420mm 10 sections in Black Iron.



Mercury 4 Column 760mm in Astral Grey Mid with Whitworth Chrome wall stay.



CAST IRON FINISHES

Get the perfect finish for your interior.

Choose from our Signature collection, specialist Bare Metal finishes or custom colours from Farrow & Ball® and Little Greene®.

Can't see the finish you want? Just get in touch.



Grace 6 Column 960mm 8 sections in Farrow & Ball® Off Black with Windsor Natural Brass Corner TRV.

BARE METAL

Bare Metal finishes are achieved with polish and lacquer. They're hand applied with natural variation from one piece to the next.



Mirror Polish



Full Polish



Satin Polish



Etch-coated Polish



Aged Gold



Natural Brass



Beaten Brass



Bronze



Natural Pewter



Ox Blood



Sapphire Blue



Wimbledon Green



Emmeline II 870mm in Little Greene® Little Greene® Portland Stone with Windsor Satin Nickel TRV and Whitworth wall stays.

SIGNATURE

Our core range of popular finishes, developed especially for cast iron.



Bright White



Ceramic White



Chalk



Grey Bronze



Manhattan



Astral Grey Mid



Astral Grey Dark



Iron Grey



Midnight Ink



Anthracite



Black Iron



Matt Black



Mercury 4 Column 360mm in Paint & Paper Library Muga with Windsor Polished Nickel TRV and Whitworth wall stays.

MAKE IT A MATCH

For a seamless drench or a vibrant pop, choose your colours from our favourite paint collections.

We use genuine branded paints under license from the manufacturers.



Little Greene®
— PAINT & PAPER 1825 —



FARROW & BALL
CRAFTSMEN IN PAINT AND PAPER




Benjamin Moore®



Mercury 3 Column 860mm in Paint & Paper Library Plaster V with Windsor Satin Nickel TRV and Whitworth wall stays.

STEEL RADIATORS

Extremely versatile bespoke steel column radiators. Built to your requirements up to 2.5m tall, 2m long and available in five depths. For bay windows or radial walls, these radiators can be curved for a perfect fit.



Florence 3 Column 1200mm in Bright White with Windsor Satin Nickel TRV.



FLORENCE

Italian-made column radiators tailored to fit any space.



FLORENCE

An extensive range of sizes which can be either wall-hung or floor-mounted. Powder coated in any of our finishes from our Signature collection and over 180 RAL colours.

Florence 2 Column **Florence 3 Column** **Florence 4 Column** **Florence 5 Column** **Florence 6 Column**

Available in 15 heights

Available in 15 heights

Available in 15 heights

Available in 15 heights

Available in 15 heights

65mm deep

101mm deep

139mm deep

177mm deep

215mm deep



FLORENCE 2 COLUMN

Model	Panel height	Heat output per section (ΔT 50)
Florence 2 Column 200mm	194mm	15 Watts
Florence 2 Column 300mm	302mm	23 Watts
Florence 2 Column 400mm	402mm	30 Watts
Florence 2 Column 500mm	502mm	37 Watts
Florence 2 Column 600mm	602mm	43 Watts
Florence 2 Column 685mm	687mm	49 Watts
Florence 2 Column 765mm	767mm	54 Watts
Florence 2 Column 900mm	902mm	63 Watts
Florence 2 Column 1000mm	1002mm	69 Watts
Florence 2 Column 1200mm	1202mm	83 Watts
Florence 2 Column 1500mm	1502mm	103 Watts
Florence 2 Column 1800mm	1802mm	124 Watts
Florence 2 Column 2000mm	2002mm	139 Watts
Florence 2 Column 2200mm	2202mm	154 Watts
Florence 2 Column 2500mm	2502mm	177 Watts



FLORENCE 3 COLUMN

Model	Panel height	Heat output per section (ΔT 50)
Florence 3 Column 200mm	194mm	20 Watts
Florence 3 Column 300mm	302mm	33 Watts
Florence 3 Column 400mm	402mm	42 Watts
Florence 3 Column 500mm	502mm	51 Watts
Florence 3 Column 600mm	602mm	61 Watts
Florence 3 Column 685mm	687mm	68 Watts
Florence 3 Column 765mm	767mm	76 Watts
Florence 3 Column 900mm	902mm	88 Watts
Florence 3 Column 1000mm	1002mm	97 Watts
Florence 3 Column 1200mm	1202mm	115 Watts
Florence 3 Column 1500mm	1502mm	142 Watts
Florence 3 Column 1800mm	1802mm	169 Watts
Florence 3 Column 2000mm	2002mm	187 Watts
Florence 3 Column 2200mm	2202mm	206 Watts
Florence 3 Column 2500mm	2502mm	234 Watts



FLORENCE 4 COLUMN

Model	Panel height	Heat output per section (ΔT 50)
Florence 4 Column 200mm	194mm	26 Watts
Florence 4 Column 300mm	302mm	42 Watts
Florence 4 Column 400mm	402mm	42 Watts
Florence 4 Column 500mm	502mm	67 Watts
Florence 4 Column 600mm	602mm	79 Watts
Florence 4 Column 685mm	687mm	89 Watts
Florence 4 Column 765mm	767mm	99 Watts
Florence 4 Column 900mm	902mm	114 Watts
Florence 4 Column 1000mm	1002mm	126 Watts
Florence 4 Column 1200mm	1202mm	149 Watts
Florence 4 Column 1500mm	1502mm	183 Watts
Florence 4 Column 1800mm	1802mm	216 Watts
Florence 4 Column 2000mm	2002mm	238 Watts
Florence 4 Column 2200mm	2202mm	260 Watts
Florence 4 Column 2500mm	2502mm	293 Watts



FLORENCE 5 COLUMN

Model	Panel height	Heat output per section (ΔT 50)
Florence 5 Column 200mm	194mm	32 Watts
Florence 5 Column 300mm	302mm	51 Watts
Florence 5 Column 400mm	402mm	67 Watts
Florence 5 Column 500mm	502mm	81 Watts
Florence 5 Column 600mm	602mm	96 Watts
Florence 5 Column 685mm	687mm	108 Watts
Florence 5 Column 765mm	767mm	120 Watts
Florence 5 Column 900mm	902mm	139 Watts
Florence 5 Column 1000mm	1002mm	152 Watts
Florence 5 Column 1200mm	1202mm	180 Watts
Florence 5 Column 1500mm	1502mm	221 Watts
Florence 5 Column 1800mm	1802mm	261 Watts
Florence 5 Column 2000mm	2002mm	288 Watts
Florence 5 Column 2200mm	2202mm	315 Watts
Florence 5 Column 2500mm	2502mm	355 Watts



FLORENCE
the detail

FLORENCE 6 COLUMN

Model	Panel height	Heat output per section (ΔT 50)
Florence 6 Column 200mm	194mm	37 Watts
Florence 6 Column 300mm	302mm	61 Watts
Florence 6 Column 400mm	402mm	79 Watts
Florence 6 Column 500mm	502mm	96 Watts
Florence 6 Column 600mm	602mm	113 Watts
Florence 6 Column 685mm	687mm	127 Watts
Florence 6 Column 765mm	767mm	140 Watts
Florence 6 Column 900mm	902mm	163 Watts
Florence 6 Column 1000mm	1002mm	179 Watts
Florence 6 Column 1200mm	1202mm	211 Watts
Florence 6 Column 1500mm	1502mm	259 Watts
Florence 6 Column 1800mm	1802mm	307 Watts
Florence 6 Column 2000mm	2002mm	338 Watts
Florence 6 Column 2200mm	2202mm	369 Watts
Florence 6 Column 2500mm	2502mm	416 Watts

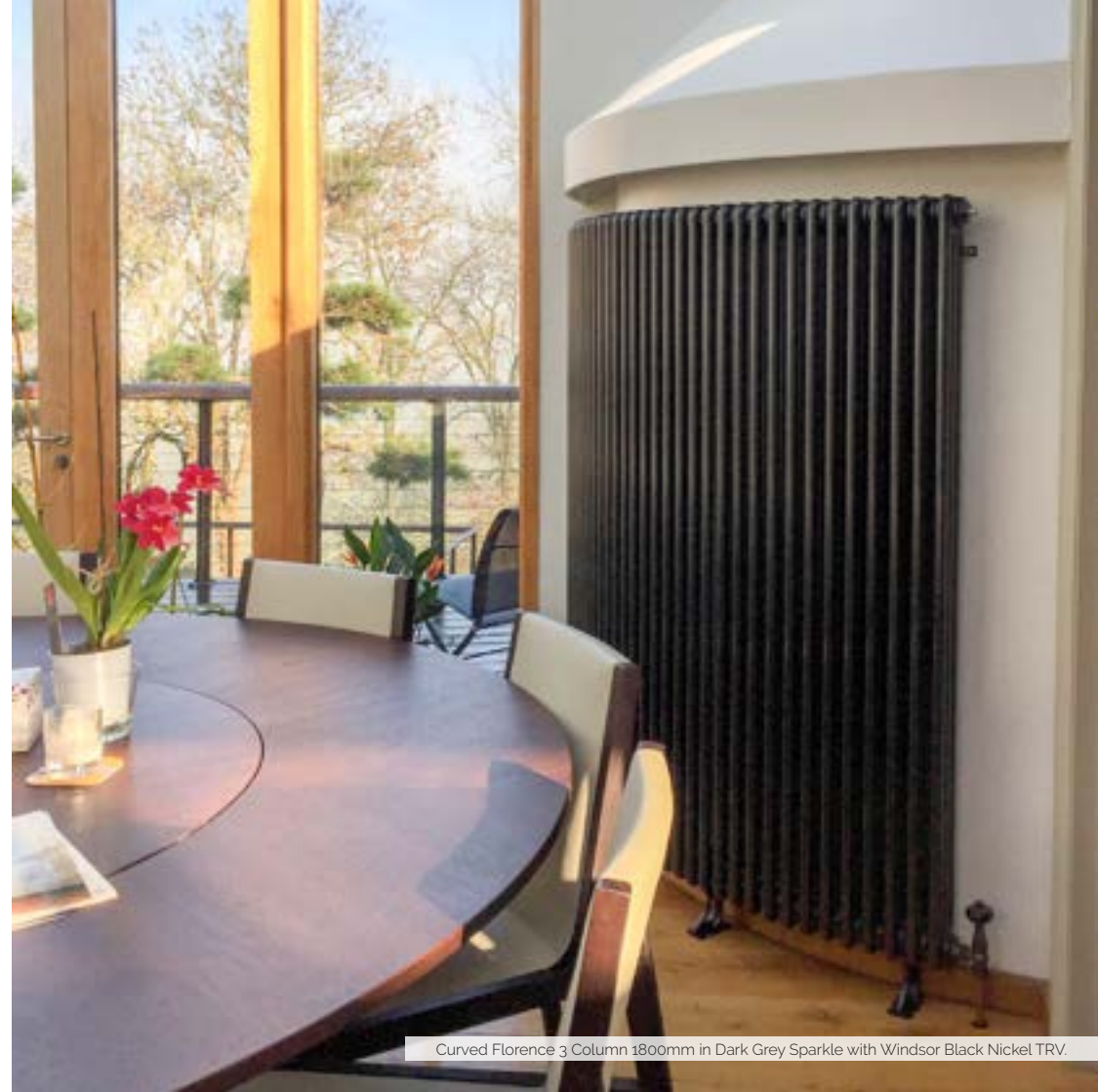
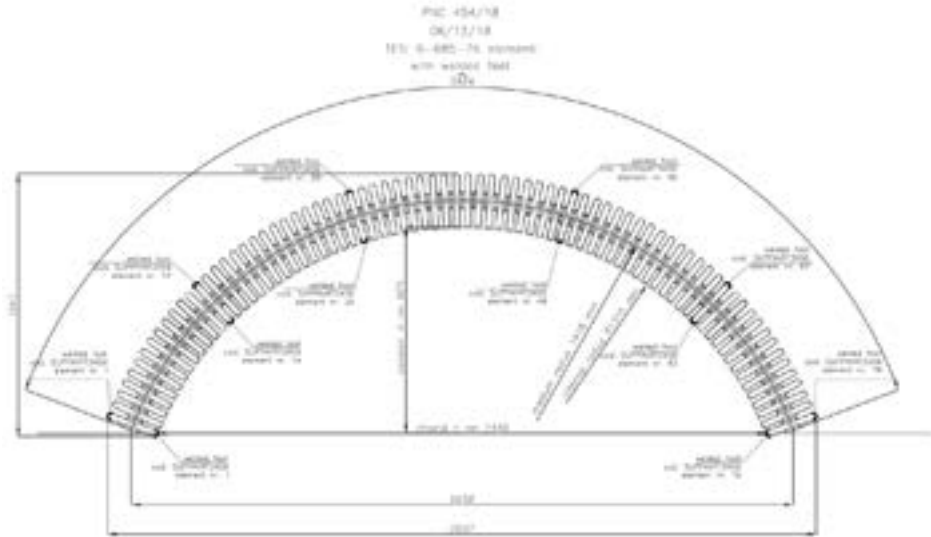


Above left: Florence 5 Column 1000mm in RAL 9003. Top right: Florence 3 Column.
Bottom right: Florence 6 Column.

FLORENCE CURVED FOR RADIAL WALLS

It's possible to make Florence radiators curved to fit into bay windows and around columns. Florence Curved can be made in all heights up to 1800mm with welded feet as standard, and is recommended for 2, 3 and 4 Column variants.

See the Explainers section at the back of this brochure for help on measuring for curved radiators. When you're ready to begin ordering we'll provide detailed guidance on precise sizing.



Curved Florence 3 Column 1800mm in Dark Grey Sparkle with Windsor Black Nickel TRV.

FLORENCE FINISHES

Florence radiators are available in our Signature collection of finishes, selected Bare Metal finishes and over one hundred and eighty RAL colours. Florence finishes are powder coated on smooth steel. They are glossier than on cast iron models and may be slightly different in hue.



SPECIALIST FINISHES



BATHROOM RADIATORS

Our heating options for the bathroom are practical while also adding interest. Two classic styles which can be floor-standing or wall-mounted to save on space. Suitable for electric heating as well as hot water systems. Made in Europe with our ten-year Ironshield Guarantee.





VIVIEN

A traditional style bathroom radiator.



VIVIEN

An Italian-made steel radiator with integrated chrome hanging bar. All radiator inserts are powder-coated in Traffic White (RAL 9016).

Vivien Shallow

Available in 3 widths

135mm deep

Vivien

Available in 3 widths

225mm deep

Vivien 6

1 size only

225mm deep

Vivien 8 Wall Mounted

1 size only

150mm deep



Vivien 5 shallow profile towel radiator.



VIVIEN
the detail

VIVIEN

Model	Output	Dimensions		
		Height	Depth	Width
Vivien 5	720 Watts	952mm	225mm	500mm
Vivien 5 Shallow Profile	715 Watts	952mm	135mm	500mm
Vivien 6	1216 Watts	1500mm	225mm	576mm
Vivien 8	946 Watts	942mm	225mm	765mm
Vivien 8 Shallow Profile	940 Watts	952mm	135mm	675mm
Vivien 8 Wall Mounted	679 Watts	825mm	150mm	675mm
Vivien 11	1126 Watts	952mm	225mm	800mm
Vivien 11 Shallow Profile	1121 Watts	952mm	135mm	800mm



Above left: Vivien 8 Wall Mounted. Top right: Vivien 6.
Bottom right: Vivien 5.



ELARA

A simple chrome towel warmer.



ELARA

Wall mounted for space saving, Elara can be used in combination with regular radiators for toasty towels and a boost of heat, or alone in smaller bathrooms and ensuites.

Elara

Available in 5 heights

130mm deep

Available in chrome and polished or brushed brass



Elara 5 in Chrome.



ELARA
the detail

ELARA

Model	Output	Height	Dimensions	
			Depth	Width
Elara 2	87 Watts	254mm	130mm	498mm
Elara 3	114 Watts	434mm	130mm	498mm
Elara 4	140 Watts	614mm	130mm	498mm
Elara 5	168 Watts	794mm	130mm	498mm
Elara 6	198 Watts	974mm	130mm	498mm





Emmeline II 665mm in Farrow & Ball® Banca with Windsor Polished Brass TRV and Whitworth wall stays.

RADIATOR VALVES

Precision-engineered valves in a range of styles and finishes to complement your radiator. For more detail on valves and the benefits of thermostatic controls see the explainers at the back of this brochure.



Rococo II 660mm in Etch-coated Polish with Windsor Satin Nickel TRV.

WINDSOR

Forged from solid brass and topped with a lacquered hardwood handle with eight finishes to choose from.



Windsor

Available as manual or thermostatic

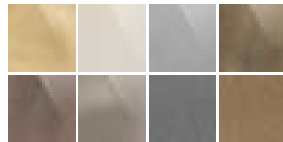
Five-year Ironshield Guarantee

Lockshield and valve set

Next day delivery available

Corner or angled options

Available in 8 different metal finishes



CHATSWORTH

Decorative valves particularly suited to ornate radiators such as Rococo.

Available in five finishes with either manual or thermostatic control.



Chatsworth

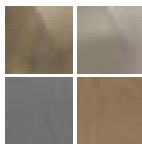
Five-year Ironshield Guarantee

Lockshield and valve set

Next day delivery available

Perfectly complements ornate radiators

Available in 4 different metal finishes



NIVA

Understated and contemporary with an easy-to-use five-point temperature scale.
Available in four finishes.



NIVA

Available as angled and corner fittings

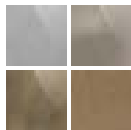
Five-year Ironshield Guarantee

Lockshield and thermostatic valve set

Next day delivery available

Perfectly complementing steel, bathroom radiators and cast iron column radiators

Available in 4 different metal finishes



CROSSHEADS

Engineered from solid brass and available in chrome.

Valves that will fit not only our cast iron radiators but also towel rails and more contemporary radiators too.



Crossheads

Manual angled valve

Five-year Ironshield Guarantee

Identical valve pair

Next day delivery available

Versatile model that complements all radiator styles

Available in Chrome



BLEED VALVES

Included as standard on Castrads hydronic radiators or sold separately for refurbishment projects.



BV-A-01-05
1/2" recessed model
Standard fitting
Available in brass and nickel



CBV-0125
1/8" traditional model
Only available for refurbishments
Available in brass and nickel



CBV-025
1/4" traditional model
Only available for refurbishments
Available in brass and nickel



SHROUDS & BASE PLATES

Shrouds available at 130mm and 300mm long. For use with 15mm pipe only.



Polished Brass



Antique Brass



Natural Brass



Polished Nickel



Satin Nickel



Natural Pewter



Chrome



Antique Copper

WHITWORTH WALL STAYS

Solid brass fixings to secure the radiator to the wall. Designed in-house and exclusive to Castrads, the Whitworth features the iconic worker bee motif that symbolizes Manchester's industrial heritage.



Polished Brass



Antique Brass



Natural Brass



Polished Nickel



Satin Nickel



Natural Pewter



Chrome



Antique Copper



Emmeline | 665mm in Little Greene® Blush with Windsor Natural Brass Manual valves and Whitworth wall stays.



AT-HOME CONSULTATIONS

We offer home visits for advice on sizing, placement and design



We perform heat loss surveys to ensure you get the right amount of heat.



We suggest the most appropriate size and placement of your new radiators.



We offer advice on design and finish to work with your property's aesthetic.

We now offer free virtual consultations.
Get in touch to book a convenient time.

+44 (0) 161 439 9350 | info@castrads.com





IRONSHIELD GUARANTEE

Your cast iron radiator is a lifetime investment. It should work flawlessly from the moment it's installed.

We Guarantee, No Questions Asked

That's why we take the utmost care to deliver a product that will heat your home for decades to come.

However, if something does go wrong with your product, our Ironshield Guarantee (ten years as standard) means that we'll do everything in our power to get you back up and running as quickly as possible.

We won't ask you about water pH levels. We won't ask you to flush your central heating system with chemicals. We will just fix it. And if our engineer can't fix it, we'll replace it.



EXPLAINERS

SOME PRACTICAL CONSIDERATIONS

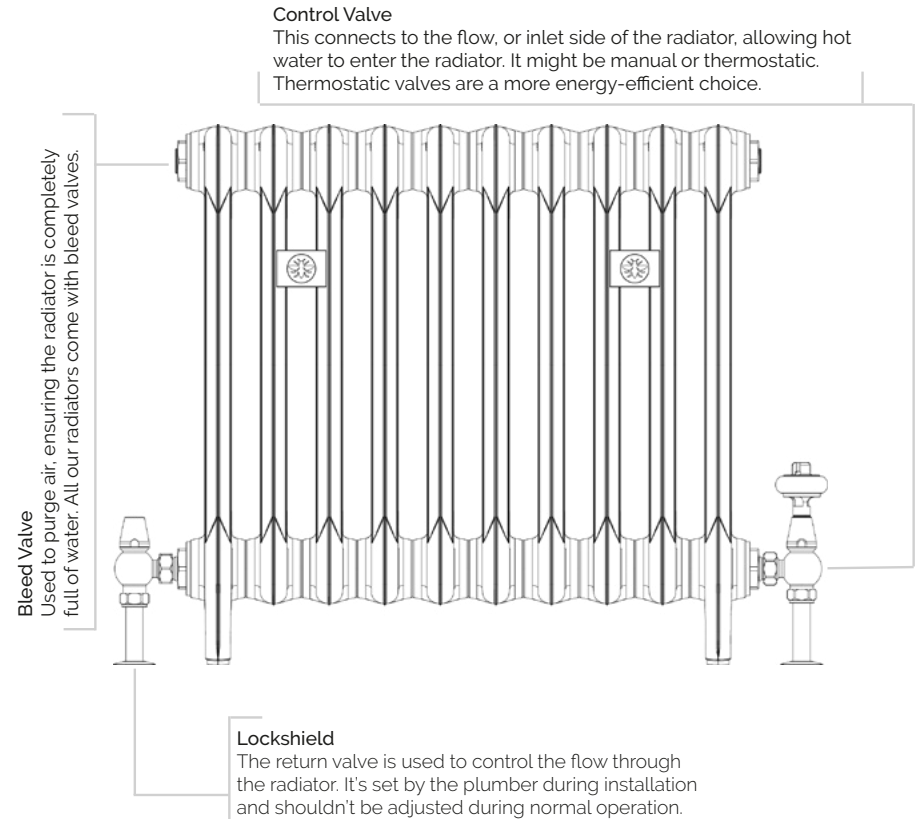
THE PARTS OF A RADIATOR

Hot water enters the radiator through a control valve and exits through a lockshield. Air is vented through the bleed valve to ensure the radiator is completely full of water.

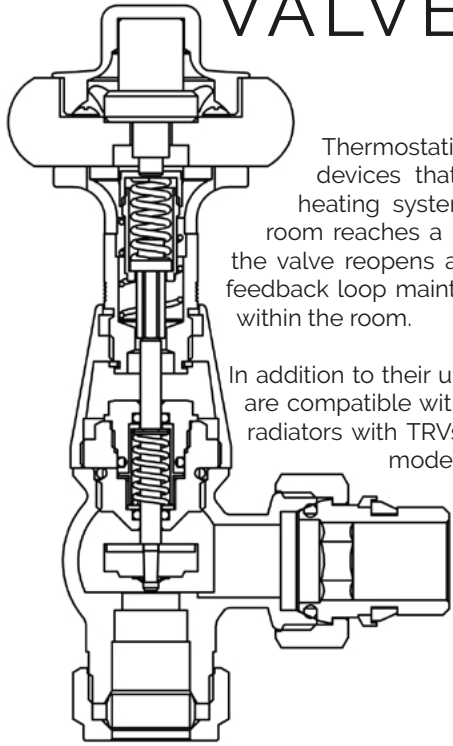
The control valve may be manual or thermostatic. We usually recommend thermostatic valves because they offer increased comfort and control as well as significant energy savings.

The lockshield is used to balance the system, ensuring the radiator furthest from the boiler reaches the same temperature as the one closest to it.

All our hydronic radiators are supplied with a bleed valve as standard. We also stock bleed valves for use in restoration projects.



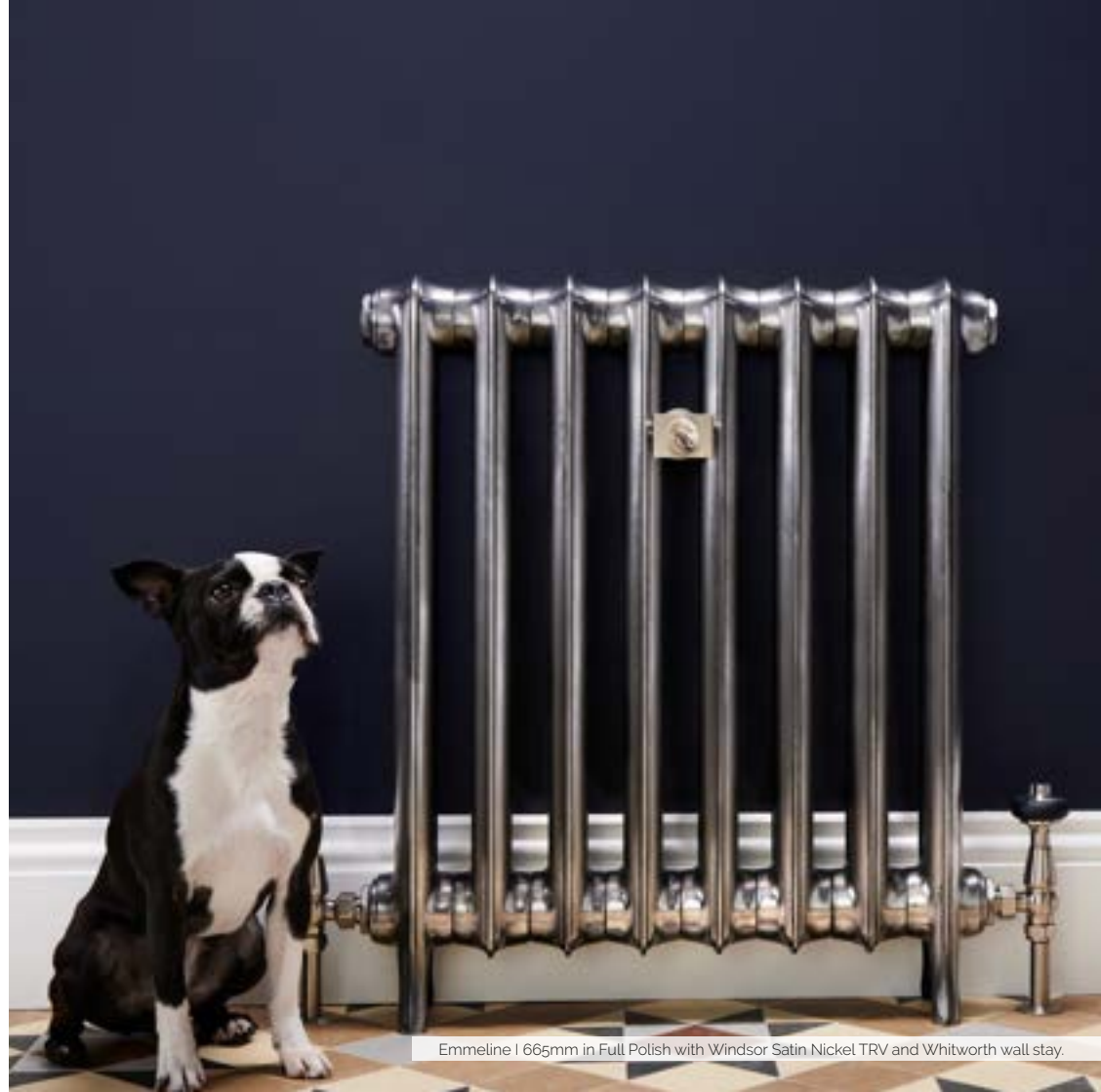
THERMOSTATIC VALVES



Thermostatic radiator valves, or TRVs, are self-regulating devices that control individual radiators on a central heating system. A TRV turns the radiator off when the room reaches a preset temperature. When the room cools, the valve reopens and the radiator begins heating again. This feedback loop maintains a stable and controllable temperature within the room.

In addition to their unbeatable lifespan, all our cast-iron models are compatible with renewable energy sources, so fitting your radiators with TRVs makes them suitable for any sustainable, modern heating system.

TRVs can be used in every room, however we may recommend using manual valves in certain situations, our representatives will advise accordingly.



Emmeline | 665mm in Full Polish with Windsor Satin Nickel TRV and Whitworth wall stay.

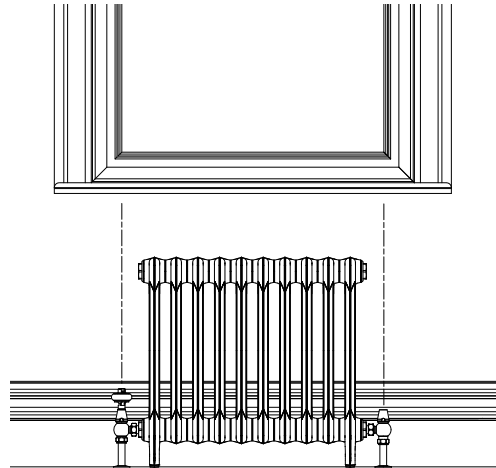
RADIATORS UNDER WINDOWS A PERFECT PAIRING

Using the space below your windows creates a 'frame' for your radiator while also boosting its performance. Draughts from the window are eliminated and the room is heated more evenly.

MEASURING UP

Aim for a minimum of 100mm between the top of the radiator and the bottom of the sill. More is fine. Less than that and the radiator begins to look a little cramped.

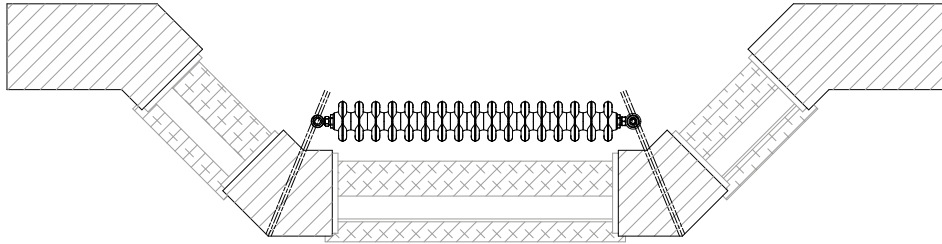
Match the width of the radiator to the width of the window. If it's a lot bigger it can look imbalanced and if it's a lot smaller it won't counteract the cool draught.



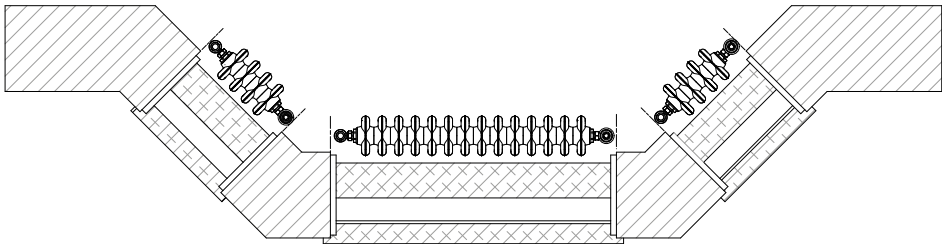
Mercury 3 Column 760mm in Matt Black with Satin Nickel Windsor TRV and Whitworth wall stays.

MEASURING FOR RADIATORS IN BAY WINDOWS

For a single radiator in a bay window, ensure that the valves don't exceed the corners of the bay (see dashed lines on the diagram).



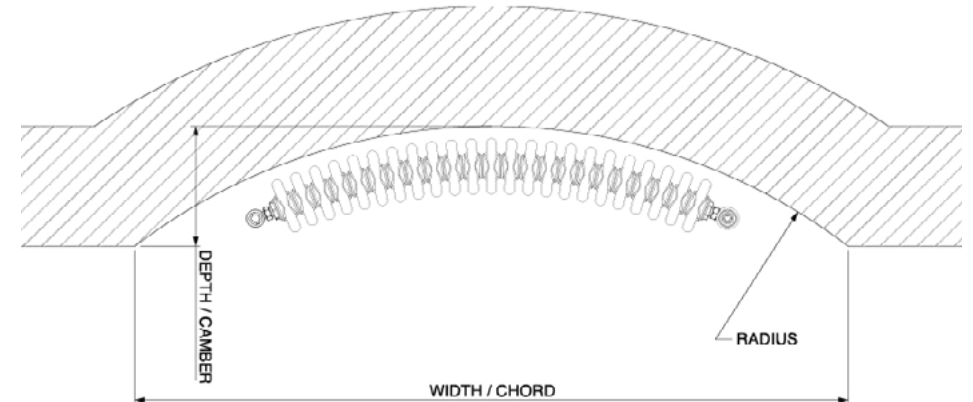
For multiple radiators in a bay, keep each radiator (including valves) to within the width of the window reveal/frame.

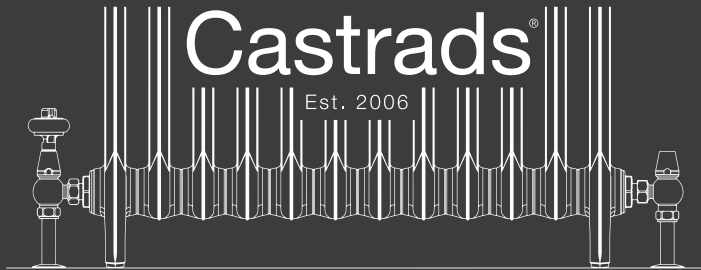


MEASURING FOR CURVED RADIATORS

Florence Curved radiators are custom-shaped to fit any radial wall or bow window. All we need is two measurements - the chord and the camber.

Measure the width of the bay using a straight edge, such as a plank of wood. This is called the chord. With the chord still in place measure from the midpoint of the chord to the wall surface at the back of the bay. This is called the camber. Use a square to make sure the measurement is perpendicular.





Custom Radiators, Unique Homes


WATERWARE
waterware.co.nz | 0800 WATERWARE

[CLICK HERE TO CONTACT US NOW.](#)