

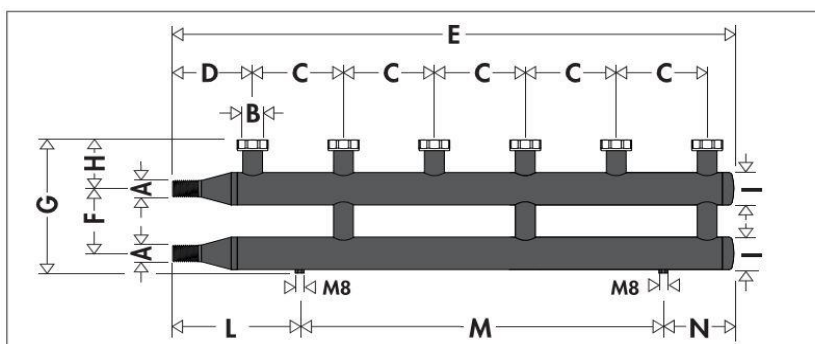
HS550030

Pump Station Manifold - 3 Station



Technical Specification

- Body: painted steel
- Maximum working pressure: 10bar
- Working temperature range: 5–110°C
- Medium: water and non-hazardous glycol solutions
- Connections:
 - main: 2 and 2+1: 1 1/4" M, 3, 4 and 3+1: 1 1/2" M
 - outlets: 1 1/2" with nut
 - fitted for brackets: M8x1,25
- Centre distance:
 - main: 120 mm
 - outlets: 125 mm
- Material: closed cell expanded PEX
- Thickness: 20 mm
- Inner Density: 30 kg/m³
- Outer Density: 50 kg/m³
- Thermal conductivity (DIN 52612):
 - at 0°C 0,038 W/(m·K),
 - at 40°C 0,045 W/(m·K)
- Working temp: 0–100°C
- Reaction to fire (DIN 4102): class B2



Code	A	B	C	D	E	F	G	H	I	L	M	N	Mass (kg)
550030	1 1/2"	1 1/2"	125	151	823	120	263	91	Ø76	213	500	110	11,3

Warranty

[Download the latest warranty statement](#)

Features

The manifolds for central heating system are used in heating and air-conditioning systems to allow different heat adjustments of the various rooms when there is only one heat generator or chiller. The various configurations are compact and can be easily fitted in any kind of hydraulic circuit, with the advantages of ease of installation and saving of useful living space. The manifolds for central heating systems can be equipped, as an accessory, with pre-formed shell insulation to ensure perfect thermal insulation in both heating and air-conditioning systems.