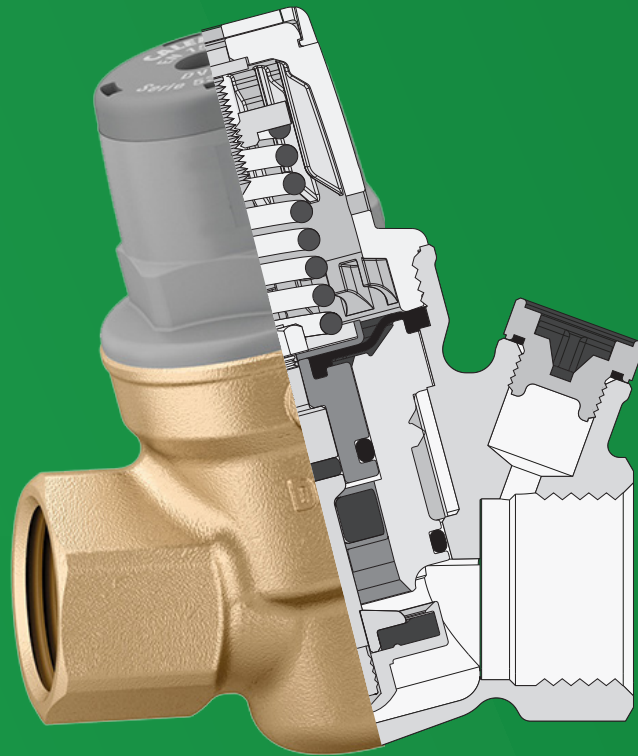




GENERAL  
PLUMBING



  
WATERWARE

[waterware.co.nz](http://waterware.co.nz)

# CALEFFI

## THE CALEFFI STORY

1960s

Caleffi founded by Antonio Caleffi in Fontaneto d'Agogna, Italy in 1961. Initial focus on pumps, valves and heat exchangers for hydronic heating. Throughout the 1960's Caleffi expanded across Italy as a leading manufacturer of residential hydronic heating components.

Introduced first zone valves and balancing valves for hydronic systems. Started exporting products to other European countries.

1970s

Began marketing products for hydronic cooling and air conditioning in Europe. Established first international subsidiary in Milwaukee, Wisconsin to serve US and Canada. Expanded global exports to Middle East, Asia Pacific and Latin America.

1980s

**1984: Waterware began its successful partnership with Caleffi**

Launched research center to develop new technologies and materials. Introduced stainless steel piping and manifold systems. Developed internet-connected control systems and thermostats.

1990s

**1992: Waterware developed the first combo valve kit for the New Zealand market**

2000s

Expanded operations in India and China to serve growing Asian markets. Acquired Italian pump manufacturer Prodomax to increase production capacity. Opened new LEED-certified headquarters and manufacturing plant in Italy.

2010s

Introduced modular hydronic systems and high-efficiency circulators. 2017 Celebrated 50 years in business and Italy's top mid-sized employer award. 2019 Antonio Caleffi inducted into ASHRAE Hall of Fame for HVAC&R innovation.

2020s

Expanded IoT connectivity and remote control features on products. 2023 and beyond - Continued focus on sustainable and smart hydronic solutions.

**2023: Waterware relaunches a consolidated Caleffi range, focusing on the highest quality product for the New Zealand market**

# CALEFFI

## PRODUCT CATALOGUE

### TEMPERING



**CTV15**

15mm Tempering valve

**CTV20**

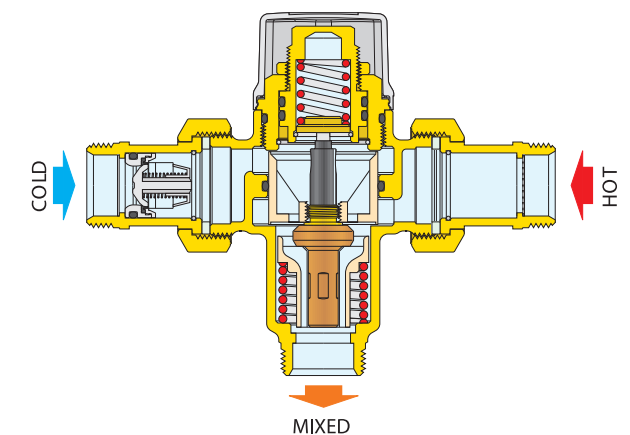
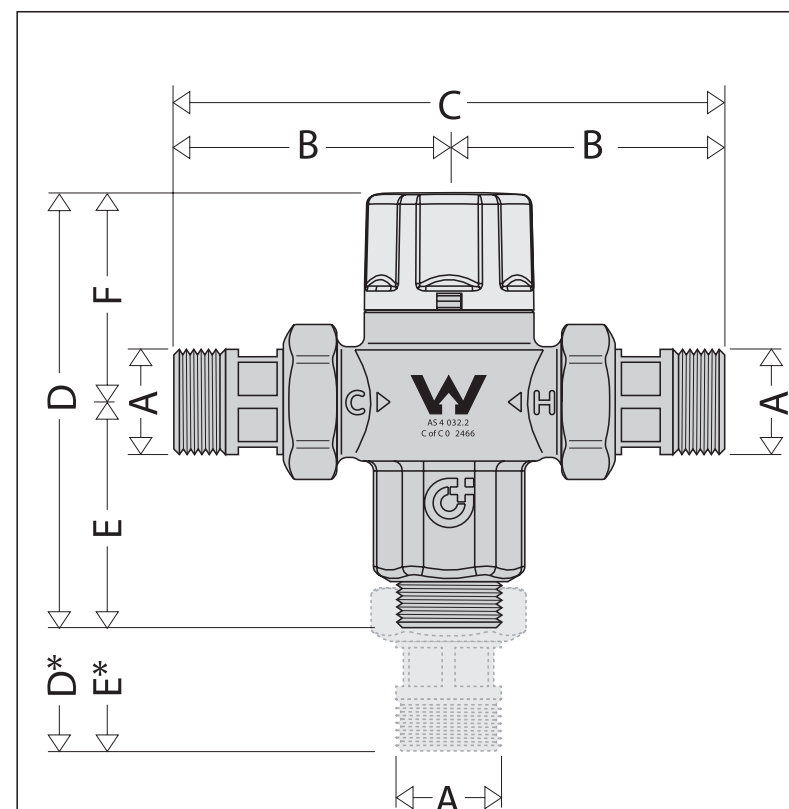
20mm Tempering valve

**CTV25**

25mm Tempering valve

#### TECHNICAL SPECIFICATION

- Temp Adjustment Range 30 - 50°C
- Temp Control +/- 3°C
- Max inlet Temp. 85°C
- Operating Press. (Dynamic) Range 20 - 500kPa
- Max Working Pressure (Static) 1400kPa
- Max. unbalanced dynamic supply differential 6:1
- Min. flow rate 4L/min
- Min. Operating Temp. Differential for thermal shutoff 10°C
- Material DZR Alloy EN 12165 CW602N
- Approvals: Certified to AS 4032.2



Code	CTV15	CTV20	CTV25
A	ø15	ø20	ø25
B	62,5	69	85,5
C	125	138	171
D	91	126,5	166,5
E	48,5	84	102,5
F	42,5	42,5	64



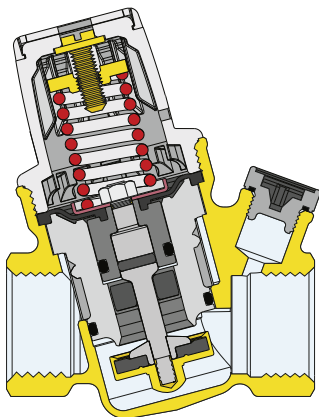
**CPR15**  
15mm Pressure reducing valve

**CPR20**  
20mm Pressure reducing valve

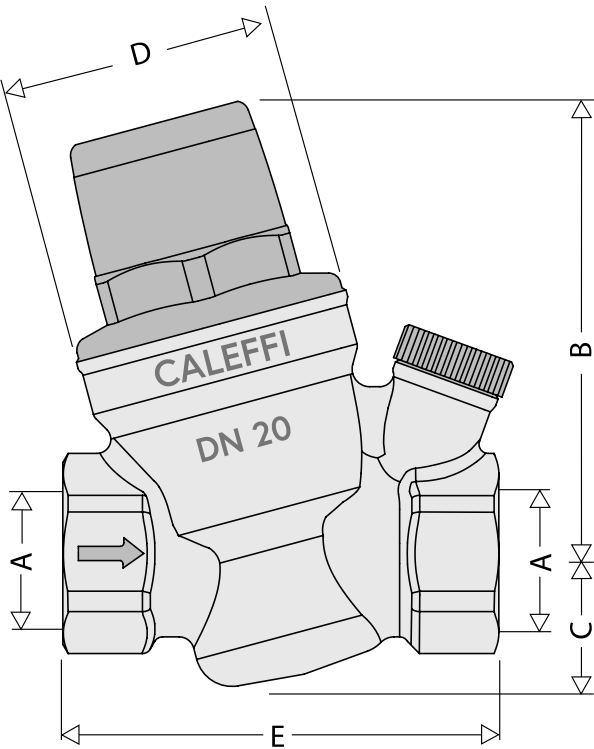
**CPR25**  
25mm Pressure reducing valve

TECHNICAL SPECIFICATION

- Body: DZR Brass EN 12165 CW602N
- Control Spindle: Stainless steel EN 10088-3
- Cartridge: PPS-PSU
- Internal components: DZR EN 12165 CW724
- Strainer: stainless steel EN10088-2 (AISI 304)
- Max. upstream pressure: 2000kPa
- Downstream pressure setting range: 100kPa - 600kPa
- Factory setting: 500kPa
- Max. working temperature: 80°C
- Medium: water
- **Connections:**
  - Main connections: 1/2" F
  - Pressure gauge connection: 1/4" F (ISO 228-1)
- Approvals: Certified to AS 1357.2



Code	CPR15	CPR20	CPR25
DN	15	20	25
A	1/2"	3/4"	1"
B	74,5	74,5	74.5
C	22	22	23
D	ø46	ø46	46
E	70	72	95
Mass (kg)	0,40	0,41	0,54



**CTP15-700**  
15mm TPR 700kpa

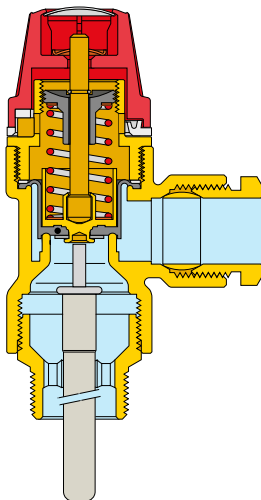
**CTP15-1000**  
15mm TPR 1000kpa

**CTP20-700**  
20mm TPR 700kpa

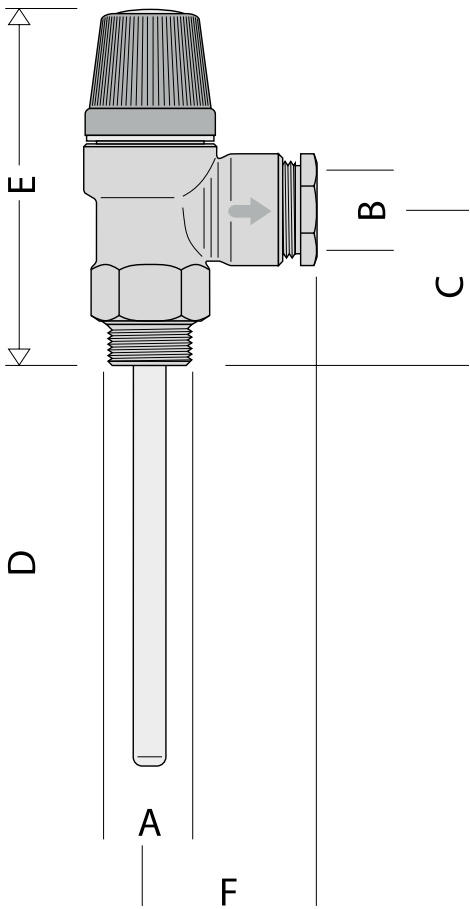
**CTP20-1000**  
20mm TPR 1000kpa

TECHNICAL SPECIFICATION

- Temperature and pressure relief valve.
- CR dezincification resistant alloy body.
- For domestic water system, to protect the hot water storage.
- Set temperature: 90°C
- Discharge rating
  - 1/2" and 3/4" Ø 15; 10 kW
  - 3/4" Ø 22; 25 kW
- Includes nut and olive to fit 15mm NZ copper
- For systems with nominal pressure of 400kPa



Code	CTP15-700	CTP15-1000	CTP20-700	CTP20-1000
A	1/2"	1/2"	3/4"	3/4"
B	ø15	ø15	ø22	ø22
C	40	40	43	43
D	102	205	99	202
E	88	88	91	91
F	39	39	39	39







## PRODUCT CATALOGUE

### COMBO VALVE KITS



#### TECHNICAL SPECIFICATION

##### Tempering Valve:

- Recommended working pressure (dynamic) 500kPa (balanced)
- Union connector with o-ring seal and cold check valve only
- Temperature range adjustable 30 - 55°C
- Temperature control +/- 3°C
- Max. inlet temperature 85°C
- Min flow rate 4L/min

##### Pressure Reducing Valve:

- 20mm female connections
- Maximum inlet pressure: 2000kPa
- Downstream pressure setting: 100 - 600kPa
- Factory setting: 500kPa
- Maximum working temperature: 80°C

##### Safety Relief Valve:

- 15mm inlet x 15mm outlet
- Male/female connections
- 800kPa
- Temperature range: 5 - 110°C
- Body - brass EN 12165 CW617N

The manifold inlet and cold water expansion adaptors can be swapped left to right to provide either left or right hand entry to the manifold. The adaptors use o-ring seals and so do not require thread tape or similar.

20mm male/male ball valve

Integrated cylinder isolator and check valve

#### COMBO20A

20mm Caleffi combo set



## PRODUCT CATALOGUE

### COMBO VALVE KITS



#### TECHNICAL SPECIFICATION

##### Tempering Valve:

- Recommended working pressure (dynamic) 500kPa (balanced)
- Union connector with o-ring seal and cold check valve only
- Temperature range adjustable 30 - 55°C
- Temperature control +/- 3°C
- Max. inlet temperature 85°C
- Min flow rate 4L/min

##### Pressure Reducing Valve:

- 20mm female connections
- Maximum inlet pressure: 2000kPa
- Downstream pressure setting: 100 - 600kPa
- Factory setting: 500kPa
- Maximum working temperature: 80°C

##### Safety Relief Valve:

- 15mm inlet x 15mm outlet
- Male/female connections
- 800kPa
- Temperature range: 5 - 110°C
- Body - brass EN 12165 CW617N

The manifold inlet and cold water expansion adaptors can be swapped left to right to provide either left or right hand entry to the manifold. The adaptors use o-ring seals and so do not require thread tape or similar.

20mm male/female ball valve

20mm male/male ball valve

Inlet manifold + male adaptor + male CV adaptor

#### COMBO20APBV

20mm Caleffi combo set



## PRODUCT CATALOGUE

### COMBO VALVE KITS



#### TECHNICAL SPECIFICATION

##### Tempering Valve:

- Recommended working pressure (dynamic) 500kPa (balanced)
- Union connector with o-ring seal and cold check valve only
- Temperature range adjustable 30 - 55°C
- Temperature control +/- 3°C
- Max. inlet temperature 85°C
- Min flow rate 4L/min

##### Safety Relief Valve:

- 15mm inlet x 15mm outlet
- Male/female connections
- 800kPa
- Temperature range: 5 - 110°C
- Body - brass EN 12165 CW617N

Inlet and cold water expansion adaptors can be swapped left to right to provide either left or right hand entry to the manifold. The adaptors use o-ring seals and so do not require thread tape or similar.

**20mm female/male ball valve**

**20mm Airaga Y strainer**

**Integrated cylinder isolator and check valve**

**COMBOPU20A**

20mm Caleffi Pump Combo Set



## PRODUCT CATALOGUE

### COMBO VALVE KITS



#### TECHNICAL SPECIFICATION

##### Tempering Valve:

- Recommended working pressure (dynamic) 500kPa (balanced)
- Union connector with o-ring seal and cold check valve only
- Temperature range adjustable 30 - 55°C
- Temperature control +/- 3°C
- Max. inlet temperature 85°C
- Min flow rate 4L/min

##### Safety Relief Valve:

- 15mm inlet x 15mm outlet
- Male/female connections
- 800kPa
- Temperature range: 5 - 110°C
- Body - brass EN 12165 CW617N

Inlet and cold water expansion adaptors can be swapped left to right to provide either left or right hand entry to the manifold. The adaptors use o-ring seals and so do not require thread tape or similar.

**20mm male/female ball valve**

**Inlet manifold + male adaptor + male CV adaptor**

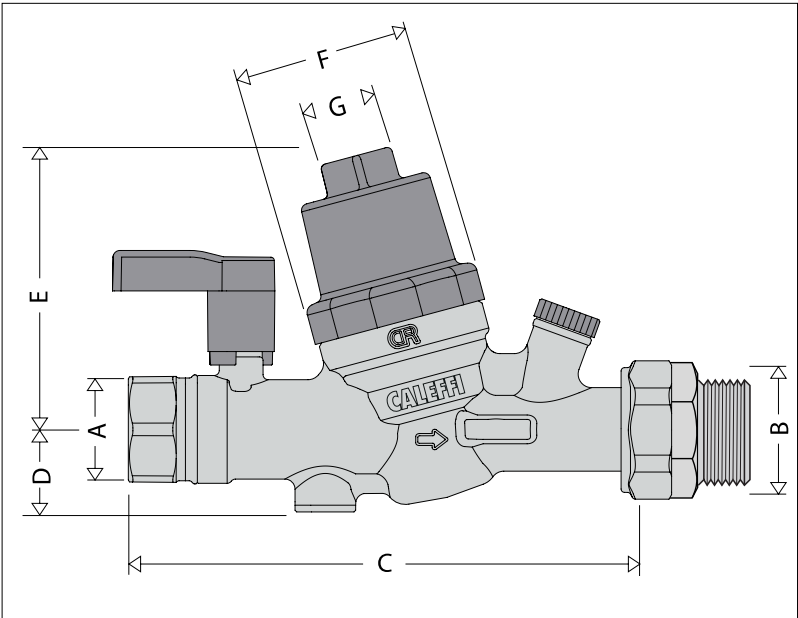
**COMBOPU20AP**

20mm Caleffi Pump Combo Set

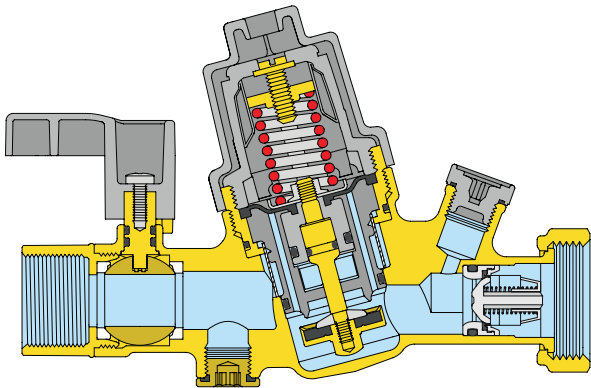
TECHNICAL SPECIFICATION

- Combined group for pressure control in domestic water systems.
- With integrated check valve, ball valve and linestrainer.
- Material: dezincification resistant brass DR "low lead". EN 12165 CW724R.
- Pressure reducing valve certified to EN 1567.
- Check valve certified to EN 13959.
- Maximum upstream pressure: 1600kPa.
- Maximum working temperature: 80°C.
- Adjustment pressure range: 100-500kPa.
- Factory setting: 500 kPa.
- Pressure test port upstream and pressure test port downstream (G 1/4")
- Self-contained replaceable cartridge.
- Connections: Inlet - 20mm Female. Outlet - 20mm Male.
- **LOW LEAD ready as an acceptable solution for G12/AS1**

CPR4IN1  
533 Series 20mm Inlet Set



Code	DN	A	B	C	D	E	F	G	Mass (kg)
539 050H	20	3/4"	1"	151,2	24,5	83,7	Ø 54	22	0,8



LOW LEAD IS ON IT'S WAY

SAME WORLD CLASS QUALITY

WHY IS CALEFFI GOING LOW LEAD?

- **Regulations:** Several countries, including New Zealand, Austrailia, the United States and Canada, are implementing stricter limits on lead content in plumbing products. The new law defines "lead-free" as a weighted average of 0.25% lead or less in wetted surfaces, significantly lower than previous allowances.
- **Health concerns:** Lead exposure, even at low levels, can have harmful health effects, particularly for children and pregnant women. By eliminating lead from their products, Caleffi contributes to safer drinking water and protects public health.
- **Market demand:** Customers are increasingly seeking lead-free options for their plumbing systems due to growing awareness of health risks and regulatory changes.

BENEFITS

Protect Your Health:

- **Improved water quality:** Eliminates the risk of lead leaching, preventing harmful health effects for all, especially children and pregnant women.
- **Peace of mind:** Knowing your lead-free plumbing reduces anxiety and fosters a healthier living environment.

Be Compliant, Stay Ahead:

- **Meet regulations:** Avoid legal issues and installation delays by staying ahead of current and future lead content restrictions. Future-proof your investment: Lead-free products ensure long-term compliance and compatibility with stricter regulations.

Enjoy Additional Value:

- **Great for your image:** Demonstrate a commitment to sustainability and environmental responsibility, boosting your brand's reputation. More comprehensive product selection: Caleffi offers a vast range of lead-free solutions for various plumbing needs.

The Responsible Choice:

- **Invest in healthier communities:** Contribute to safer drinking water for everyone by supporting lead-free initiatives. Future-proof your plumbing system: Enjoy peace of mind and avoid health risks and compliance issues.

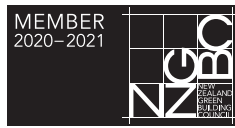
By choosing Caleffi's lead-free products, you gain more than just compliance – you prioritize health, contribute to a sustainable future, and invest in a smarter, safer plumbing system.



LOW LEAD



*Proud members of*



  
WATERWARE

[waterware.co.nz](http://waterware.co.nz)

[info@waterware.co.nz](mailto:info@waterware.co.nz)

+64 9 273 9191

