

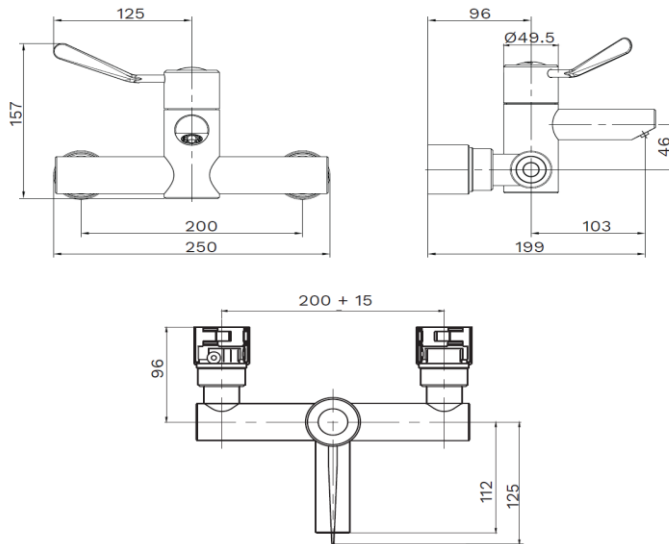
GTMVPM30100

Tempset Thermostatic Exposed Wall Mounted
Mixing Tap 100mm Lever



Technical Specification

- Material: DZR Brass
- Cartridge: Mechanical/wax element
- Inlet: 15mm
- Outlet: 5.61L/min laminar aerator
- Working Pressures: 20kPa - 500kPa
- Rec. Working Pressure: 350kPa
- Working Temperatures: 10°C - 50°C
- Mixed Outlet Temperature: 35°C - 50°C
- Hot Inlet Temperature Min 55°C - Max 80°C
- Max Differential Inlet Pressure: 10:1 Ratio
- Finish: Chrome-plated
- Approval info: AS4032.1



Warranty

[Download the latest warranty statement](#)

Features

- Point-of-use to reduce risk of legionella
- Thermostatic valve is located under the handle for easy maintenance
- Anti Vandal aerator (comes with key)
- 100mm lever
- Supplied with strainers, and non-return/isolating valves
- Recommended for health projects