

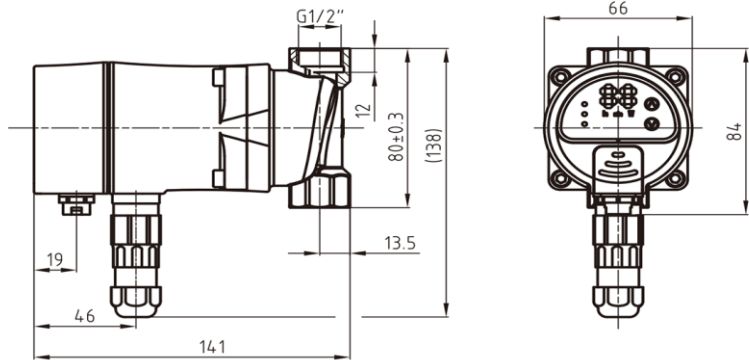
# PUSPC15B-HE

SPC high efficiency ringmain pump, 15mm brass

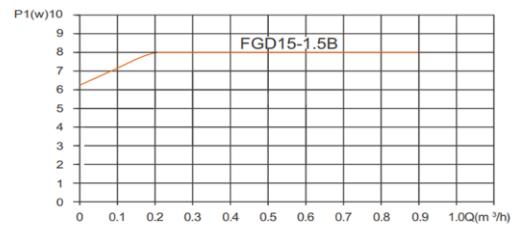
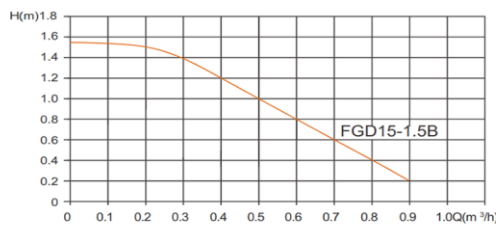


## Technical Specification

- Connection: 15mm female thread
- Body Construction: Brass
- Maximum head: 1.5mtr
- Maximum flow: 0.9m<sup>3</sup>/h
- Power supply voltage: 230V 50/60Hz, PE
- Motor protection: No external protection required
- IP class: IP42
- Insulation class: F
- (RH) Humidity:Max. 95%
- System pressure: 10 bar maximum
- Environment temperature: 0 - 40°C
- Temperature class: TF95
- Liquid temperature: 2 - 110°C



Constant speed mode performance curve



## Application

The SPC high efficiency ringmain pump, 15mm brass is used in plumbing systems to control water flow rate or balancing and is installed mostly in plant rooms.

## Warranty

[Download the latest warranty statement](#)

## Features

SCP is Circulating pump research and developed by scientific research personnel of our company.

Equipped with Self Adapting Mode(Auto Mode, Factory Setting), pump runs once the power is connected and adapts its performance according to actual system needs. Control is effected by digital pulse-width modulation (PWM) low-voltage signal, enabling the pump to be used to meet different flow requirement in various systems.

With low noise they can be installed anywhere and A class energy efficiency, Power consumption lowest to 5W.

Featuring over-voltage and over-current protection

Quick release power plug to start-up and stop the pump quickly.