



Quarry

CONCRETE BASINS

Designed by 
WATERWARE
INTERIORS
waterware.co.nz



Credit: Falling Dusk at the Hawkduns 150
Painted by Michelle Bellamy
<https://www.bellamygallery.co.nz/>

Introduction

The Quarry collection renews concrete with a revolutionary blend, offering a colour-sealed, hand-finished look and feel.

The colour palette draws inspiration from the rugged Otago landscape, celebrating the region's natural beauty.

From the earthy clay tones to the rusty reds and soothing blues and grays, we've partnered with the talented artist Michelle Bellamy to translate the heart of Otago into

our colour palette. Her captivating paintings serve as a testament to the region's rich heritage and inspire our designs.

Transform your bathroom into a sanctuary of style and sophistication. Enjoy the extraordinary fusion of art and utility, where concrete becomes a canvas for creativity and your bathroom becomes a personal oasis.



Inspired by *Bellamy Gallery*

Waterware extends a special thanks to Michelle Bellamy for partnering with us to showcase the beauty of her New Zealand landscapes through our Quarry basins and their complementary colour-sealed finishes.

About the artist

Michelle Bellamy is a contemporary New Zealand landscape artist and she is inspired by the land, back-country and outdoor culture of Aotearoa (New Zealand). She is drawn to back-country hiking huts, tarns and vast mountain scenes, as Michelle spends much of her time outside, hunting, mountain biking & exploring the valleys and ranges of New Zealand.



You can find more of Michelle's gallery at www.bellamygallery.co.nz



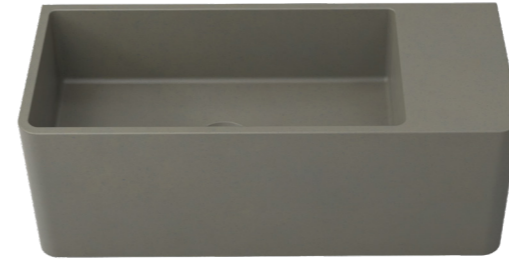
Tussock - Black Earth
 QUTU13BE no taphole
 QUTU13ABE with taphole



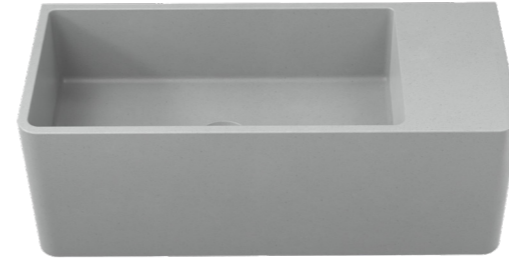
Tussock - Blue Water
 QUTU13BW no taphole
 QUTU13ABW with taphole



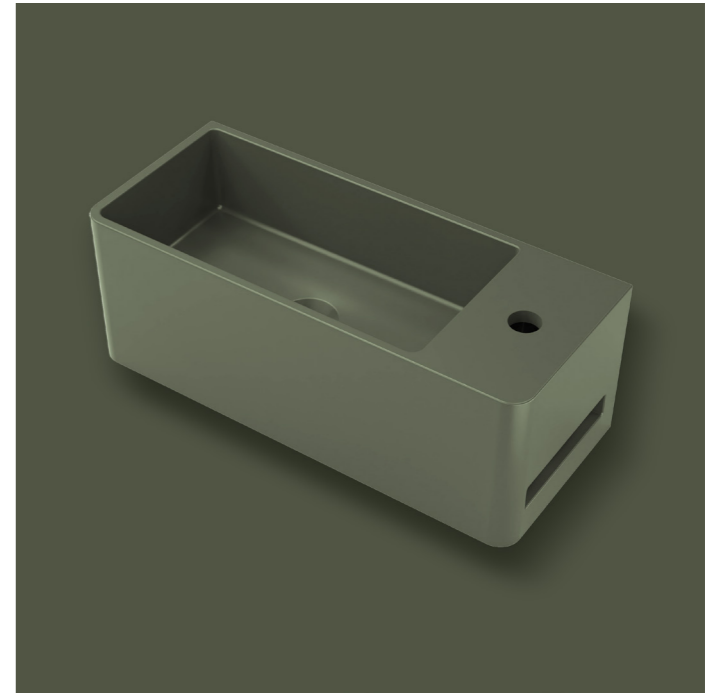
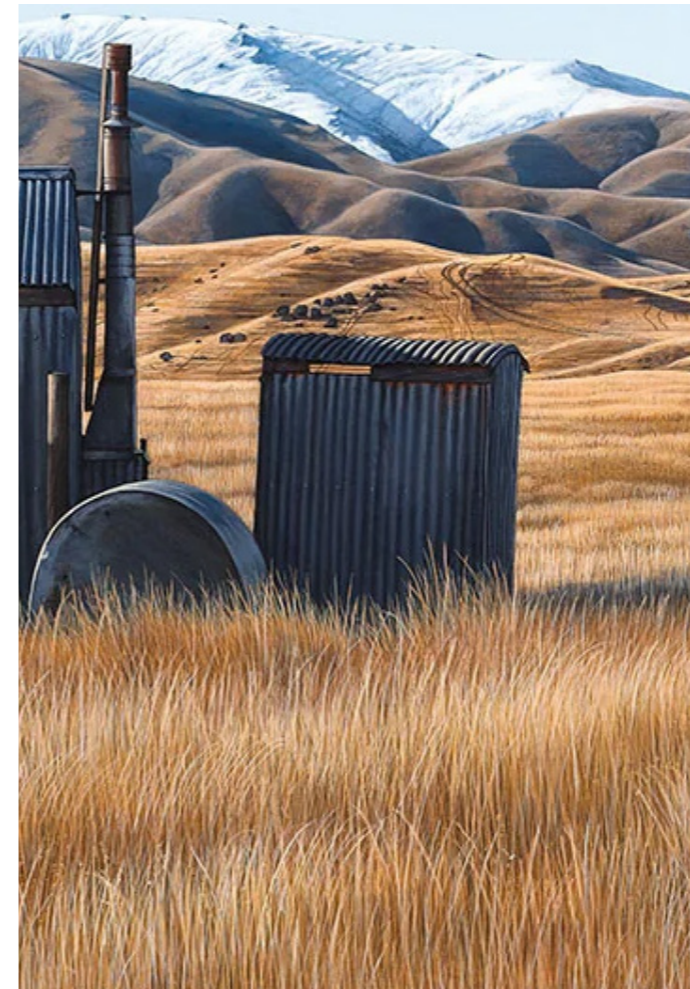
Tussock - Tan
 QUTU13OB no taphole
 QUTU13AOB with taphole



Tussock - Taupe Clay
 QUTU13TC no taphole
 QUTU13ATC with taphole



Tussock - Grey White
 QUTU13GW no taphole
 QUTU13AGW with taphole



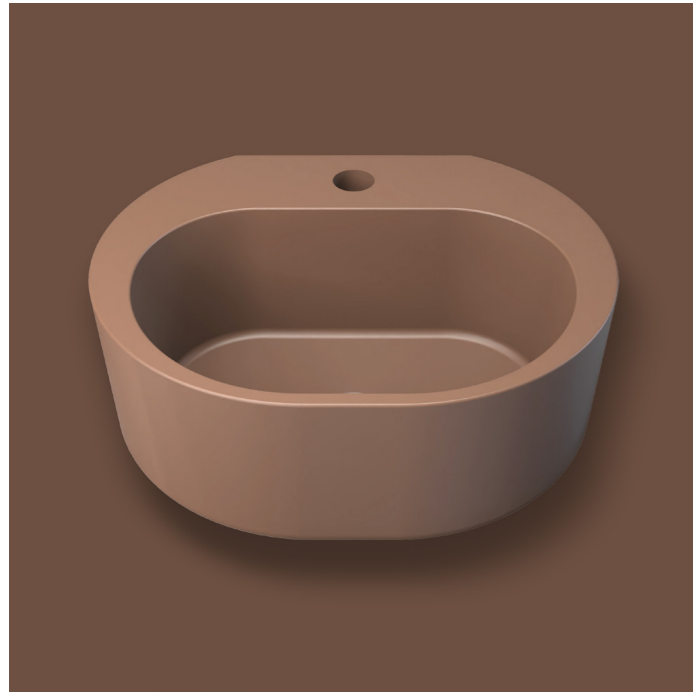
Tussock Collection

Named after Otago's Tussock grasslands, this softly curved square collection embodies the region's muted palette and rugged yet refined qualities.

The Tussock basins are designed for easy installation, available in various finishes, and customisable for both deck and wall-mounted taps, ensuring seamless integration into any bathroom design.



Tussock - Grey Green
 QUTU11GG no taphole
 QUTU11AGG with taphole



Dunstan Collection

Inspired by the Dunstan Lake area of Otago, this curved collection captures the region's rich heritage.

The Dunstan collection is hard-wearing, designed for easy installation, and available in various finishes. Customisable for both deck and wall-mounted taps, these basins seamlessly integrate into any bathroom design.

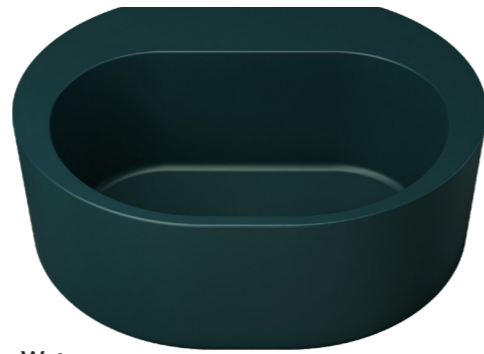


Dunstan - Tan
QUDU11OB no taphole
QUDU11AOB with taphole

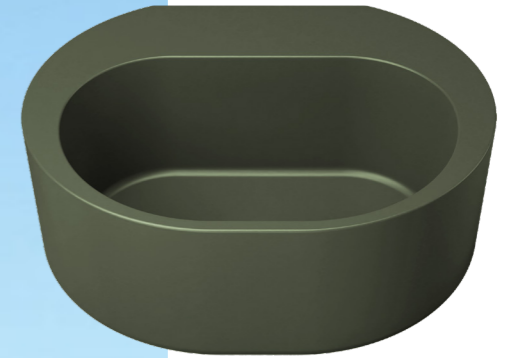
Credit: Dunstan Mountains Beyond Poolburn Dam Central Otago
Painted by Michelle Bellamy
<https://www.bellamygallery.co.nz/>



Dunstan - Black Earth
QUDU11BE no taphole
QUDU11ABE with taphole



Dunstan - Blue Water
QUDU11BW no taphole
QUDU11ABW with taphole



Dunstan - Grey Green
QUDU11GG no taphole
QUDU11AGG with taphole



Dunstan - Taupe Clay
QUDU11TC no taphole
QUDU11ATC with taphole



Dunstan - Grey White
QUDU11GW no taphole
QUDU11AGW with taphole

Quarry

CONCRETE BASINS

CUSTOMER CARE

Our Quarry basins are unique, with a colour-sealed finish that provides water tolerance, enhances colour, and protects against wear. However, it's essential to handle them with care.

Avoid using abrasive cleaners, soaps, or harsh scrubbers, as these may wear down the sealer. General cleaning is best done using a soft cloth and a mild soap of neutral pH. It is recommended to apply a wax to maintain the concrete sink every 6 months, especially in areas that are prone to lime scale.

WARRANTY

Scan the QR Code below to see the full warranty and care and use details.

