

QUICK GUIDE

HPRPD5 Conventional Electric HWC/Protank⁺ cylinder configuration



The following guide, shows the recommended method in configuring the HPRPD5 Ritter R290 Hotwater heatpump to a standard hot water cylinder.

Creating Probe Pocket



Recommended method to mount the DHW probe:
Use a 6mm allen key to create a well against the inside skin of the cylinder.



Push the allen key up to create a well 75mm long, vertically above the element housing.

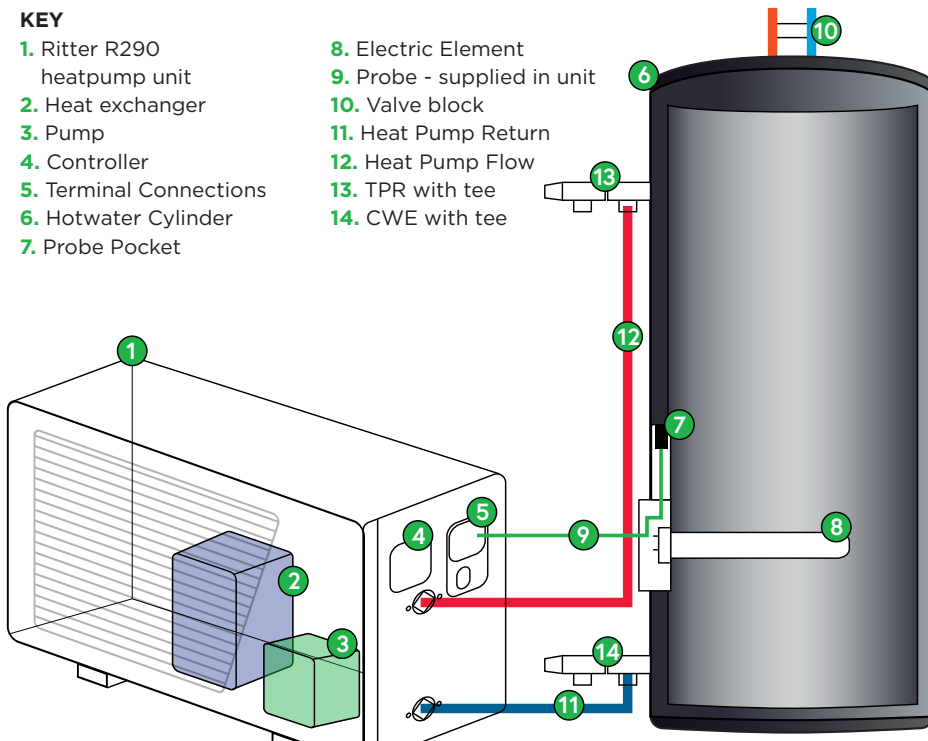


Thread the DHW probe through the cable gland and push into the well.

KEY

- 1. Ritter R290 heatpump unit
- 2. Heat exchanger
- 3. Pump
- 4. Controller
- 5. Terminal Connections
- 6. Hotwater Cylinder
- 7. Probe Pocket

- 8. Electric Element
- 9. Probe - supplied in unit
- 10. Valve block
- 11. Heat Pump Return
- 12. Heat Pump Flow
- 13. TPR with tee
- 14. CWE with tee



QUICK GUIDE

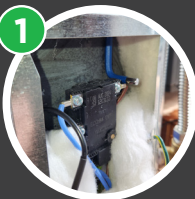
HPRPD5 Dual entry cylinder configuration

The following guide, shows the recommended method in configuring the HPRPD5 Ritter R290 Hotwater heatpump to a standard hot water cylinder, with LH and RH cold water inlets.



Creating Probe Pocket

1



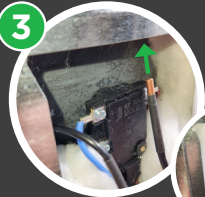
Recommended method to mount the DHW probe:
Use a 6mm allen key to create a well against the inside skin of the cylinder.

2



Push the allen key up to create a well 75mm long, vertically above the element housing.

3

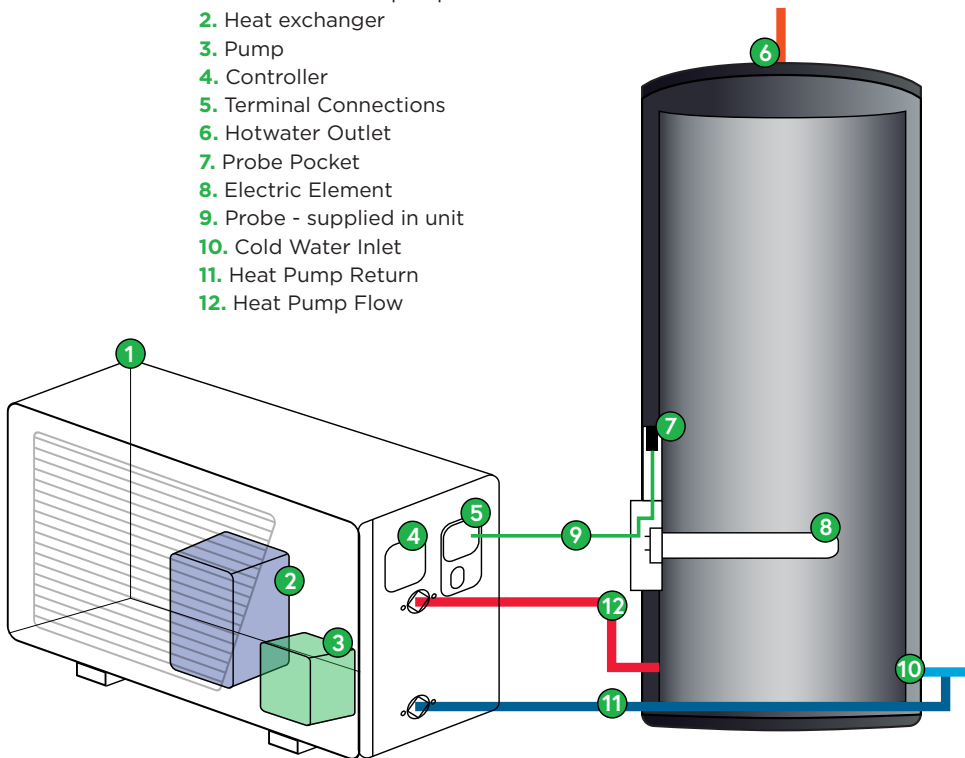


Thread the DHW probe through the cable gland and push into the well. Replace insulation wool.



KEY

- 1. Ritter R290 heatpump unit
- 2. Heat exchanger
- 3. Pump
- 4. Controller
- 5. Terminal Connections
- 6. Hotwater Outlet
- 7. Probe Pocket
- 8. Electric Element
- 9. Probe - supplied in unit
- 10. Cold Water Inlet
- 11. Heat Pump Return
- 12. Heat Pump Flow



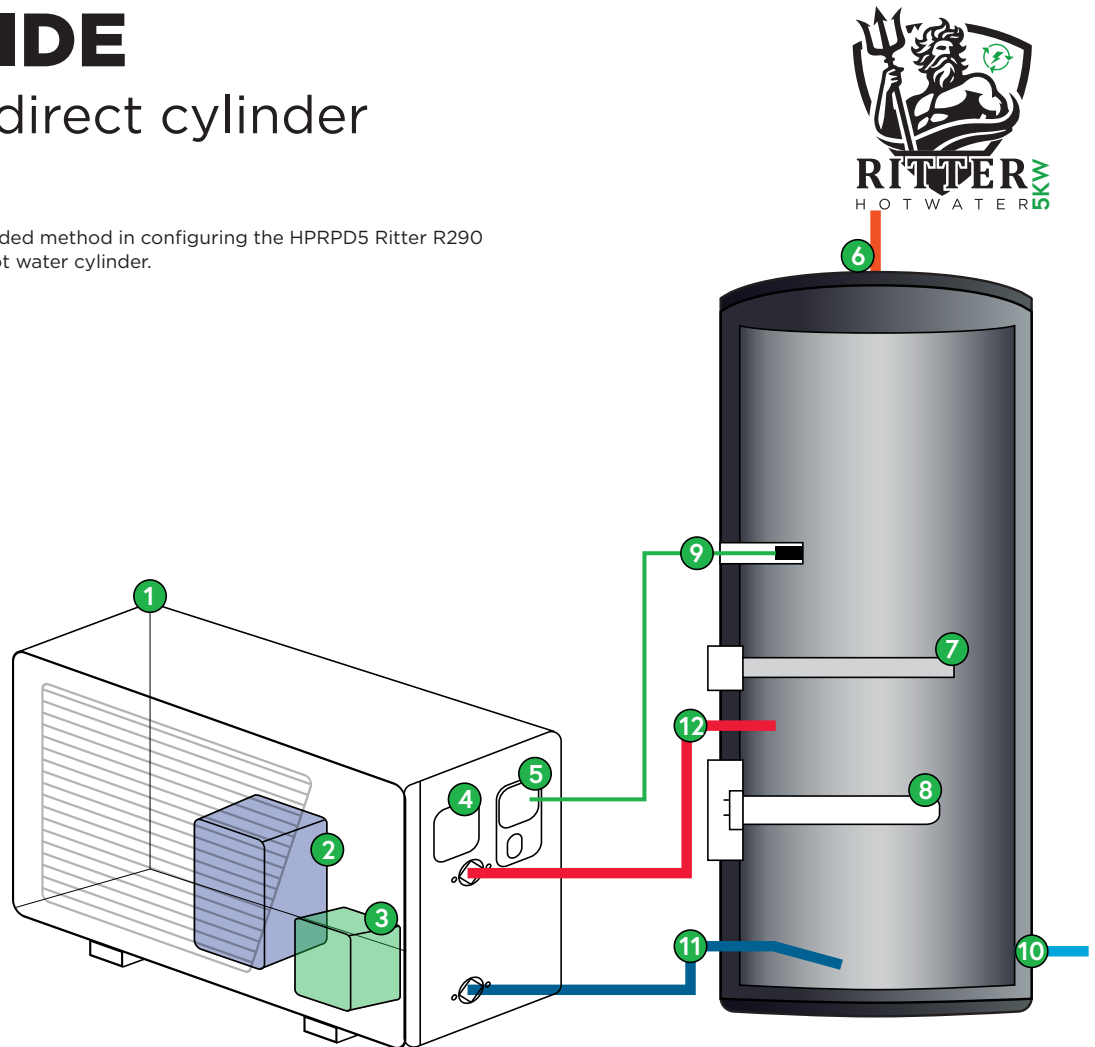
QUICK GUIDE

HPRPD5 Solar direct cylinder configuration

The following guide, shows the recommended method in configuring the HPRPD5 Ritter R290 Hotwater heatpump to a standard solar hot water cylinder.

KEY

- 1. Ritter R290 heatpump unit
- 2. Heat exchanger
- 3. Pump
- 4. Controller
- 5. Terminal Connections
- 6. Hotwater Outlet
- 7. Anode Rod
- 8. Electric Element
- 9. Probe - supplied in unit
- 10. Cold Water Inlet
- 11. Heat Pump Return
- 12. Heat Pump Flow



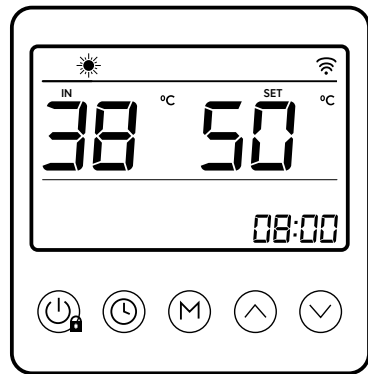
QUICK GUIDE

HPRPD5 Conventional Electric HWC/ Protank⁺ cylinder configuration

Compensating the probe reading:

After the cylinder has reached set point, draw water off the TPR & measure it's temperature.

Adjust parameter P26 value so the stated tank temperature matches the water temperature from the TPR.



Your Ritter R290 Hotwater Controls



1. If the padlock is displayed on the display press the power button for 5s to unlock



2. Press and hold the menu button for 10s to enter the L menu



3. Press and hold the menu button again for 10s to enter the P menu



4. Press the up button to navigate to P26



5. Press the M button to navigate to the P26 value



6. Press the up button to adjust the value to the required value



7. Press the M button to save the value



8. Press the power button to return to the main menu

Adjusting the reheat trigger:

Adjust parameter L17 to 4°C, this triggers the HP to start recovering the tank @ 56°C (60-4°C)



1. If the padlock is displayed on the display press the power button for 5s to unlock



2. Press and hold the menu button for 10s to enter the L menu



3. Press the up button to navigate to L17



4. Press the M button to navigate to the L17 value



5. Press the up button to adjust the value to 4



6. Press the M button to save the value



7. Press the power button to return to the main menu