

Tune

Designed by

WATERWARE



PIONEER  
FORGE  
TAPWARE

WITH TRIM KITS &  
UNIVERSAL SHOWER VALVES



## FEATURES

### Elevated Design Meets Practical Innovation

The Pioneer bathroom tapware range brings together functionality, timeless design, and future-ready features. Built for modern living and engineered for long-term performance, Pioneer is the go-to choice for those who demand more from their bathroom fixtures - more flexibility, more style options, and more confidence in compliance with evolving standards.

### Future-Proof Flexibility with Trim Kits

Our Pioneer bathroom tapware range now features modular trim kits – the ultimate in design flexibility and installation convenience. With separate rough-in and finish components, plumbers can complete the behind-the-wall installation early, leaving homeowners and designers free to choose their perfect finish and style later. Whether you're building new or renovating, this approach reduces delays, supports design changes on the fly, and makes future upgrades a breeze.

### Lead-Free Peace of Mind

Crafted from premium 304 stainless steel, Pioneer tapware is 100% lead-free, delivering healthier water from the start. This not only reflects our commitment to quality and safety but also ensures compliance with New Zealand's upcoming low-lead plumbing legislation, effective from May 2026. When you choose Pioneer, you're choosing a solution that's built to last and ready for the future.

### Six Designer Finishes, Endless Style

From timeless chrome to bold matte black, Pioneer is available in six on-trend finishes to suit any bathroom aesthetic: brushed gold, brushed nickel, matte black, gun metal, chrome, and the stunning new brushed bronze. Whether you're going minimalist or making a statement, this versatile collection ensures your tapware doesn't just function beautifully — it looks the part too.







## NANO-COATING

**Anti-fingerprint nanocoating is an effective contribution to hygiene and appearance in kitchens or other hygienically critical areas.**

Nano-Coating is a unique and innovative technology, which provides long lasting protection of all forms of stainless steel. The benefits include: durability, self-cleaning and anti-fingerprint.

The Nano-coating is a antimicrobial protective layer that is highly effective in preventing bacterial growth and the formation of biofilms. This coating can withstand treatment by harsh disinfectants, meaning that surfaces remain clean or can be cleaned with little effort. In places that are difficult to access, a targeted jet of water is sufficient.

### Corrosion Protection

Stainless steel does not mean that it is resistant to everything. To provide stainless steel with lasting protection against acids, bases and weathering, an additional sealant is a good idea. This creates a thick, very hard protective film that also offers good resistance to aggressive media.

### How Surface Sealing Works

Nano-coating is a special silicon oxide powder which is applied to the surface of a product and cured with UV light. This process leaves the surface with an invisible, micro-rough structure. The microrough structure makes it impossible for dirt and water droplets to stick to the surface which can be very helpful in catering kitchens with their highly greasy fumes: instead of washing greasy films from cabinets with harsh detergents, simple water is sufficient in most cases. This reduces the need for harsh cleaning agents and thus protects the environment.

## Advantages of Nano-coating



### Improved hygiene

The micro-rough surface of nano coating ensures that dirt, grease and moisture can no longer adhere directly to the steel sheet.



### Protection against oxidation

The nano coating also protects stainless steel from unwanted oxidation by chemicals.



### Self-cleaning surface

Nano coating for stainless steel makes it particularly easy to clean. Grease splashes and other dirt are simply wiped off with a damp cloth.



### Anti-fingerprint

With a Nano-coating sealant, fingerprints are significantly reduced.

PIONEER FORGE

# BRUSHED BRONZE

MAINS PRESSURE 304 STAINLESS TAPWARE



**FWPI10BZ**

Ceiling mounted  
dump rose



**FWPI09BZ**

Wall mounted dump rose

**FWPIF10130BZ**

Bath/shower  
mixer



**FWPI10170BZ**

Wall mounted  
bath spout



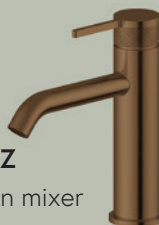
**FWPIF10152BZ**

Wall mount basin mixer  
6 Star 4.5L/min



**FWPIF10110BZ**

Standard basin mixer  
6 Star 4.5L/min



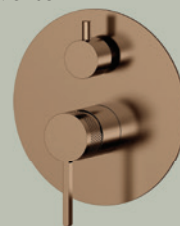
**FWPIF10111BZ**

Tall basin mixer  
6 Star 4.5L/min



**FWPIF10135BZ**

Shower diverter



**FWPI1101BZ**

Shower Tower,  
with 3 spray function  
ABS handshower  
3 star 9.0L/min



**FWPI1091BZ**

Slide shower,  
with 3 spray function  
ABS handshower  
3 star 9.0L/min

**FWK20121FBZ**

Gooseneck extractable  
kitchen mixer  
6 Star 4.5L/min



**FWK20110FBZ**

Swivel Spout  
kitchen mixer  
4 Star 6L/min



## METRO ACCESSORIES

SMALL BUT IMPORTANT DETAILS



**FWPI6820BZ**

Single toilet roll holder



**FWPI6821BZ**

Double toilet roll holder



**FWPI6824BZ**

Hand towel rail, 400mm



**FWPI6822BZ**

Robe holder





**FW01BZ**  
ClickClack



**FW02BZ**  
ClickClack  
w/overflow



**FWBT01BZ**  
Bottle Trap





**FW01GM**  
ClickClick

**FW02GM**  
ClickClick  
w/overflow



**FWBT01GM**  
Bottle Trap

PIONEER FORGE

# GUN METAL

MAINS PRESSURE 304 STAINLESS TAPWARE



**FWPI10GM**

Ceiling mounted  
dump rose



**FWPI09GM**

Wall mounted dump rose



**FWPI1091GM**

Slide shower,  
with 3 spray function  
ABS handshower  
3 star 9.0L/min



**FWPIF10110GM**

Standard basin mixer  
6 Star 4.5L/min



**FWPIF10111GM**

Tall basin mixer  
6 Star 4.5L/min



**FWK20121FGM**

Gooseneck extractable  
kitchen mixer  
6 Star 4.5L/min

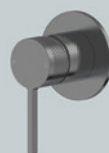
**FWK20110FGM**

Swivel Spout  
kitchen mixer  
4 Star 6L/min



**FWPIF10130GM**

Bath/shower  
mixer



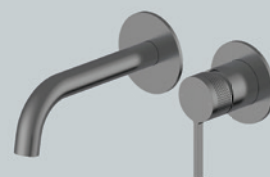
**FWPI10170GM**

Wall mounted  
bath spout



**FWPIF10152GM**

Wall mount basin mixer  
6 Star 4.5L/min



**FWPIF10135GM**

Shower diverter



## METRO ACCESSORIES

SMALL BUT IMPORTANT DETAILS



**FWPI6820GM**

Single toilet roll holder



**FWPI6821GM**

Double toilet roll holder



**FWPI6824GM**

Hand towel rail, 400mm



**FWPI6822GM**

Robe holder



PIONEER FORGE

# BRUSHED STAINLESS

MAINS PRESSURE 304 STAINLESS TAPWARE



**FWPI10BS**

Ceiling mounted  
dump rose



**FWPI09BS**

Wall mounted dump rose



**FWPI1091BS**

Slide shower,  
with 3 spray function  
ABS handshower  
3 star 9.0L/min



**FWPIF10110BS**

Standard basin mixer  
6 Star 4.5L/min



**FWPIF10111BS**

Tall basin mixer  
6 Star 4.5L/min



**FWK20121FBS**

Gooseneck extractable  
kitchen mixer  
6 Star 4.5L/min

**FWK20110FBS**

Swivel Spout  
kitchen mixer  
4 Star 6L/min

**FWPIF10130BS**

Bath/shower  
mixer



**FWPI10170BS**

Wall mounted  
bath spout



**FWPIF10152BS**

Wall mount basin mixer  
6 Star 4.5L/min



**FWPIF10135BS**

Shower diverter



**FWPI1101BS**

Shower Tower,  
with 3 spray function  
ABS handshower  
3 star 9.0L/min

## METRO ACCESSORIES

SMALL BUT IMPORTANT DETAILS



**FWPI6820BS**

Single toilet roll holder



**FWPI6821BS**

Double toilet roll holder



**FWPI6824BS**

Hand towel rail, 400mm



**FWPI6822BS**

Robe holder





**FW01BS**  
ClickClack



**FW02BS**  
ClickClack  
w/overflow



**FWBT01BS**  
Bottle Trap





**FW01BG**  
ClickClack



**FW02BG**  
ClickClack  
w/overflow



**FWBT01BG**  
Bottle Trap



PIONEER FORGE

# BRUSHED GOLD

MAINS PRESSURE 304 STAINLESS TAPWARE



**FWPI10BG**

Ceiling mounted  
dump rose



**FWPI09BG**

Wall mounted dump rose



**FWPI1091BG**

Slide shower,  
with 3 spray function  
ABS handshower  
3 star 9.0L/min



**FWPIF10110BG**

Standard basin mixer  
6 Star 4.5L/min

**FWPIF10111BG**

Tall basin mixer  
6 Star 4.5L/min

**FWPI1101BG**

Shower Tower,  
with 3 spray function  
ABS handshower  
3 star 9.0L/min

**FWPIF10130BG**

Bath/shower  
mixer



**FWPI10170BG**

Wall mounted  
bath spout



**FWPIF10152BG**

Wall mount basin mixer  
6 Star 4.5L/min



**FWPIF10135BG**

Shower diverter



**FWK20110FBG**

Swivel Spout  
kitchen mixer  
4 Star 6L/min



**FWK20121FBG**

Gooseneck extractable  
kitchen mixer  
6 Star 4.5L/min

## METRO ACCESSORIES

SMALL BUT IMPORTANT DETAILS



**FWPI6820BG**

Single toilet roll holder



**FWPI6821BG**

Double toilet roll holder



**FWPI6824BG**

Hand towel rail, 400mm



**FWPI6822BG**

Robe holder

PIONEER FORGE

# MATTE BLACK

MAINS PRESSURE 304 STAINLESS TAPWARE



**FWPI10MB**

Ceiling mounted  
dump rose



**FWPI09MB**

Wall mounted dump rose



**FWPI1091MB**

Slide shower,  
with 3 spray function  
ABS handshower  
3 star 9.0L/min



**FWPIF10110MB**

Standard basin mixer  
6 Star 4.5L/min

**FWPIF10111MB**

Tall basin mixer  
6 Star 4.5L/min

**FWPI1101MB**

Shower Tower,  
with 3 spray function  
ABS handshower  
3 star 9.0L/min

**FWPIF10130MB**

Bath/shower  
mixer



**FWPI10170MB**

Wall mounted  
bath spout



**FWPIF10152MB**

Wall mount basin mixer  
6 Star 4.5L/min



**FWPIF10135MB**

Shower diverter



**FWK20110FMB**

Swivel Spout  
kitchen mixer  
4 Star 6L/min



**FWK20121FMB**

Gooseneck extractable  
kitchen mixer  
6 Star 4.5L/min

## METRO ACCESSORIES

SMALL BUT IMPORTANT DETAILS



**FWPI6820MB**

Single toilet roll holder



**FWPI6821MB**

Double toilet roll holder



**FWPI6824MB**

Hand towel rail, 400mm



**FWPI6822MB**

Robe holder





**FW01MB**  
ClickClack



**FW02MB**  
ClickClack  
w/overflow



**FWBT01MB**  
Bottle Trap





**FW01CP**  
ClickClack

**FW02CP**  
ClickClack  
w/overflow



**FWBT01CP**  
Bottle Trap



# PIONEER FORGE CHROME

MAINS PRESSURE 304 STAINLESS TAPWARE



**FWPI10CP**

Ceiling mounted  
dump rose



**FWPI09CP**

Wall mounted dump rose



**FWPI1091CP**

Slide shower,  
with 3 spray function  
ABS handshower  
3 star 9.0L/min



**FWPIF10110CP**

Standard basin mixer  
6 Star 4.5L/min



**FWPIF10111CP**

Tall basin mixer  
6 Star 4.5L/min

**FWPIF10130CP**

Bath/shower  
mixer



**FWPI10170CP**

Wall mounted  
bath spout



**FWPIF10152CP**

Wall mount basin mixer  
6 Star 4.5L/min



**FWPIF10135CP**

Shower diverter



**FWK20121FCP**

Gooseneck extractable  
kitchen mixer  
6 Star 4.5L/min



**FWK20110FCP**

Swivel Spout  
kitchen mixer  
4 Star 6L/min

## METRO ACCESSORIES

SMALL BUT IMPORTANT DETAILS



**FWPI6820CP**

Single toilet roll holder



**FWPI6821CP**

Double toilet roll holder



**FWPI6824CP**

Hand towel rail, 400mm



**FWPI6822CP**

Robe holder

**Stainless steel bathroom tapware** provides a sleek, modern look while delivering durability and safety. Unlike tapware ranges that contain brass, which are classified as low-lead, stainless steel is 100% lead-free. This ensures safer water quality by completely eliminating the risk of lead leaching.

Resistant to rust and corrosion, it thrives in humid conditions, offering longevity comparable to low-lead tapware. Its non-porous surface repels bacteria and stains, enhancing hygiene, while its easy maintenance and recyclability make it an eco-conscious choice.

With a versatile, timeless finish, stainless steel tapware blends style and health-focused benefits seamlessly.

Choosing Waterware tapware mean your choosing lead free.

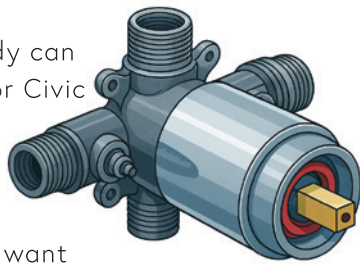


**304 Stainless steel.** Comes in six different finishes:- brushed gold, chrome, brushed bronze, matte black, gun metal, brushed stainless.



#### UNIVERSAL VALVES

**Why:** A single valve body can pair with both Pioneer or Civic trim kits and finishes without replacing the valve itself.



**Future-proofing:** If you want to change your shower style or finish later, you can just swap the trim rather than opening the wall to replace the valve.

**Simplifies installation:** Plumbers and builders can stock and install one valve type for multiple bathroom styles, saving time and reducing complexity.

# Tune

Designed by

**WATERWARE**

waterware.co.nz | info@waterware.co.nz | +64 9 273 9191

