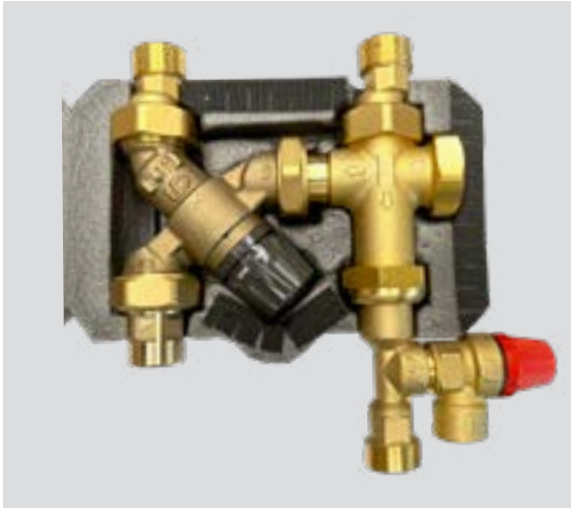




Product Name
Caleffi Instant Connect

Product Category
General Plumbing

SKU Code
COMBOINSTA



INSTANT CONVERSION KIT

**Express Tail with check valve,
cold water expansion valve and port:**

- 600kpa cold water expansion valve
- Supports mixed flow rate up to 30L per minute

Insulation Clam:

- Working temperature range: 0-100°C
- Fire behaviour (DIN 4102): class B2

TECHNICAL SPECIFICATION

Tempering valve H-Pattern body:

- 20mm (with check valve)
- Cold water feed with union connector
- Offset centres to accommodate most pipework
- Temperature range adjustable 35 - 55°C
- Temperature control +/- 2°C
- Max. inlet temperature 90°C
- Recommended working pressure (dynamic) 500kPa (balanced)
- Min flow rate 4L/min

APPLICATION

An express solution for replacing an instantaneous gas unit with an all-in-one hot water heat pump or high temperature hot water heat pump. Designed to line up with the existing pipework, removing the usual rework, cutting install time.

WARRANTY

Download the latest warranty statement

FEATURES

- Faster installs – Fewer fittings and less rework
- Offset centres to accommodate most pipework
- **Meets NZ G12 low lead requirements**
- Reliable performance – Backed by Caleffi engineering.
- Professional finish – Clean, consistent, and easy to maintain.